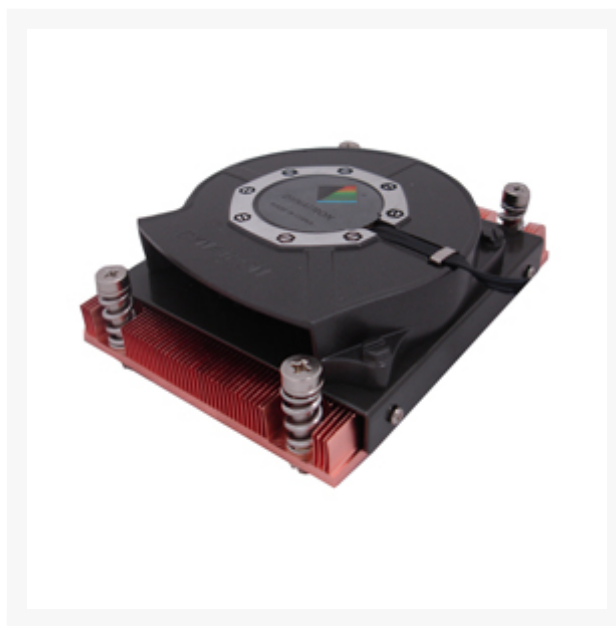




# Dynatron R13 Intel Sandy Bridge EP/EX Processors for Socket 2011 1U Active CPU Cooler

Special Price  
**\$23.99** was  
**\$31.99**

## Product Images





## Short Description

Dynatron R13 Intel Sandy Bridge EP/EX Processors (for Narrow ILM Mounting Only) for socket 2011, 1U Active Solution 2 Ball Bearing CPU Cooler

# Description

Dynatron R13 Intel Sandy Bridge EP/EX Processors (for Narrow ILM Mounting Only) for socket 2011, 1U Active Solution 2 Ball Bearing CPU Cooler

## Specifications

CPU Socket	2011 (Narrow Type, 56 x 94mm mounting pitch)
	
CPU Support	Intel® Sandy Bridge EP/EX Processors (for Narrow ILM Mounting Only)
	
Solution	1U&Up Server
	
Overall Dimension	102.0 x 70.0 x 28.0 mm
	
Weight	400 g
	
Material	Copper Heatsink with Skiving Fins
	
Fan Dimension	70 x 70 x 15 mm
	
Speed	At Duty Cycle 20%: 1100 RPM At Duty Cycle 50%: 2600 RPM At Duty Cycle 100%: 6000 RPM
	
Bearing	2 Ball Bearing
	
Rated Voltage	12 V
	

Power  
At Duty Cycle 20%: 0.6 W  
At Duty Cycle 50%: 1.2 W  
At Duty Cycle 100%: 8.76 W



Air Flow  
At Duty Cycle 20%: 2.453 CFM  
At Duty Cycle 50%: 5.798 CFM  
At Duty Cycle 100%: 14.321 CFM



Noise Level  
At Duty Cycle 20%: 19.1 dBA  
At Duty Cycle 50%: 34.2 dBA  
At Duty Cycle 100%: 53.8 dBA



Air Pressure  
At Duty Cycle 20%: 1.252mm-H2O  
At Duty Cycle 50%: 6.997 mm-H2O  
At Duty Cycle 100%: 50.458 mm-H2O



Lead Wire Pin Out  
Pin1- (-)  
Pin2- (+)  
Pin3- (Techometer/Signal output)  
Pin4- (PWM)



Thermal Resistance  
VS. Cooling Fan Speed



Note  
1. for Narrow ILM Mounting Only, mounting pitch 56 x 94mm  
2. Support CPU Power up to 95 Watts  
3. Thermal Grease Pre-Printed.  
4. RoHS Compliance  
5. Backplate / Back Strips is not included.

## Additional Information

Brand	Dynatron
SKU	R13-D
Weight	1.0000
Compatibilty	Intel LGA 2011&(-3)/2066
Material	Copper
Fan Dimensions	70mm
Fan Connection	4-Pin PWM
Special Price	\$23.99

