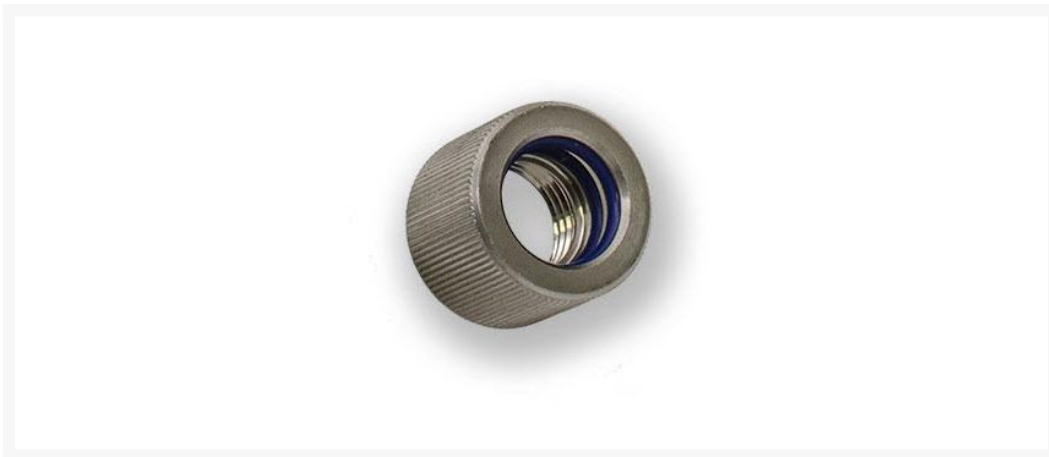




# EK-HD Adapter Female 10/12mm - Black Nickel

\$4.50

## Product Images



## Short Description

EK-HD Adapter Female is a solid-tube female type fitting, intended to be used with solid tubing such as Acrylic or Copper tube. The product is made of machined brass with quality O-rings. These adapters are fully compatible with EK-CSQ series (45°/90°) angled adapters.

## Description

EK-HD Adapter Female is a solid-tube female type fitting, intended to be used with solid tubing such as Acrylic or Copper tube. The product is made of machined brass with quality O-rings. These adapters are fully compatible with EK-CSQ series (45°/90°) angled adapters.

# Specifications

---

## Technical data:

- Inner thread: G1/4" BSP
- Supported tube: 16mm (OD)
- Outer diameter of a fitting: 21.7mm
- Installed height: 11mm
- Compatible tubing: solid Acrylic-, Copper-, Brass- or Stainless Steel tube

ROHS Compliant!

Made in Slovenia - EU!

## PLEASE NOTE:

- Please wet the gasket (o-ring) using drops of water prior to installing solid tube.
- Do not use excessive force when inserting solid tube!
- It is mandatory to chamfer the edges of freshly cut solid tube in order to prevent gasket (o-ring) damage. EK recommends a 0,5mm x 45° chamfer.

# Additional Information

---

|                |                    |
|----------------|--------------------|
| Brand          | EK Waterblocks     |
| SKU            | EK-HD-F-10-12-BKNK |
| Weight         | 0.0500             |
| Special Order  | No                 |
| Fitting Type   | Rigid Compression  |
| Fitting Size   | 10mm/12mm          |
| Fitting Angle  | Straight           |
| Vendor SKU/EAN | 3831109845882      |

