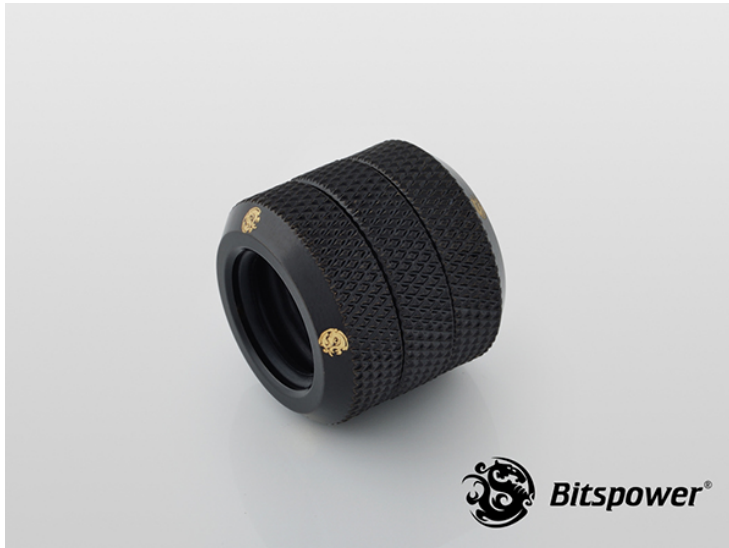


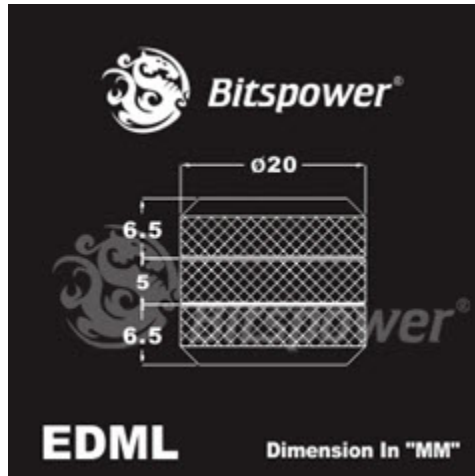


Bitspower G1/4" Matte Black Enhance Dual Multi-Link For Acrylic Tube OD 12MM

\$7.95

Product Images





Description

New Bitspower G1/4" Matte Black Enhance Dual Multi-Link For Acrylic Tube OD 12MM

Note: Primochill rigid tubing is *not* compatible with any of the Bitspower rigid fittings; Primochill rigid tubing is 1/2" OD which is roughly 12.7mm OD.

Features

- True Hi-Flow Design.
- Hi Quality Brass Material.
- High Durability Nickel Finished In Matte Black Color.
- Design For Multi-Link Extension Application Via Acrylic Tube OD 12MM On Both Side.
- Compatible With Crystal Link Tube Series
- RoHS Compliant.

Specifications

Specifications:

- Thread : G1/4"
- Thread Length : 5MM

All Specification Will Be Changed Without Further Notice

Additional Information

Brand	Bitspower
SKU	BP-MBEDML
Weight	0.2000
Special Order	No
Fitting Type	Rigid Coupler
Fitting Size	10mm/12mm
Fitting Angle	Straight
Fitting Finish	Matte Black
Vendor SKU/EAN	4719552215997

