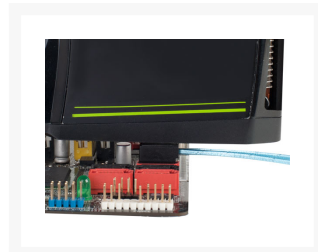


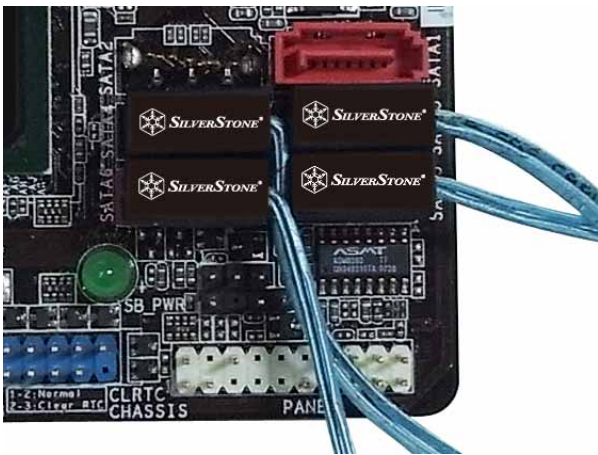
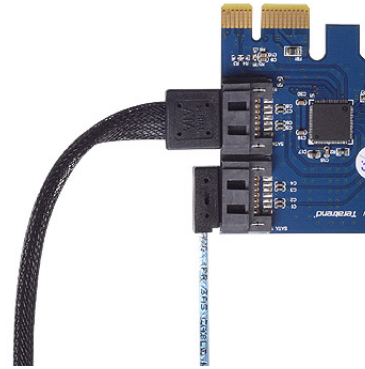
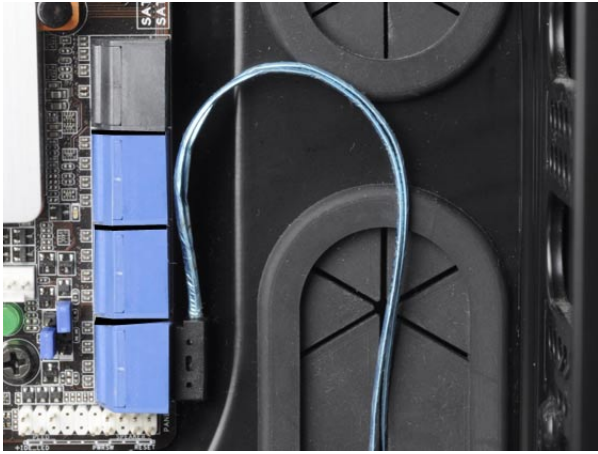


Silverstone Low-Profile Ultra Thin 90° 6Gb/s SATA Cable

\$11.99

Product Images





Short Description

For many enthusiasts, one of the biggest letdowns while installing or upgrading graphics cards is to find out the cards blocks off SATA connectors on their motherboards. This is still a common occurrence as motherboards are made with the assumption that users with long and powerful graphics card don't need to use all SATA connectors while users with lots of SATA drives typically don't need to install long cards

Description

Product Details:

For many enthusiasts, one of the biggest letdowns while installing or upgrading graphics cards is to find out the cards blocks off SATA connectors on their motherboards. This is still a common occurrence as motherboards are made with the assumption that users with long and powerful graphics card don't need to use all SATA connectors while users with lots of SATA drives typically don't need to install long cards. SilverStone engineers, whom are used to creating no compromise products such as cases that offer world-class cooling with minimal noise, took up the challenge to design a cable that will allow SATA connectors to be used even with long graphics cards installed. After months of research and development, the CP11, a revolutionary SATA cable, was

conceived. It has incredibly low connector profile that is barely taller than the SATA connector on the motherboard to clear any card that you may wish to install. CP11 also has super-thin wires designed to the limit of allowable SATA standard with high quality material for uncompromised data and bandwidth integrity. They are so thin that CP11 can be routed into the tiny gaps between SATA connectors on the motherboard! If you want to utilize SATA connectors that were originally blocked off or want to upgrade your card without sacrificing SATA connections, the CP11 is your perfect solution.

Features

Features:

- Ultra thin cable design for use on any motherboard
- High quality construction for top speed and reliability
- Super low-profile connectors

Specifications

Specifications:

Model No.	SST-CP11
Color	Black connector, blue cable
Connectors	Lateral 90° angled SATA connector
Length	300mm*
Transmitting Speed	6Gb/s
Remark	

*CP11 is shorter than typical 500mm SATA cables, please verify for compatibility before purchasing.

Additional Information

Brand	SilverStone Technology
SKU	CP11
Weight	0.3000
Cable Type	SATA Power Extension
Vendor SKU/EAN	844761010638

