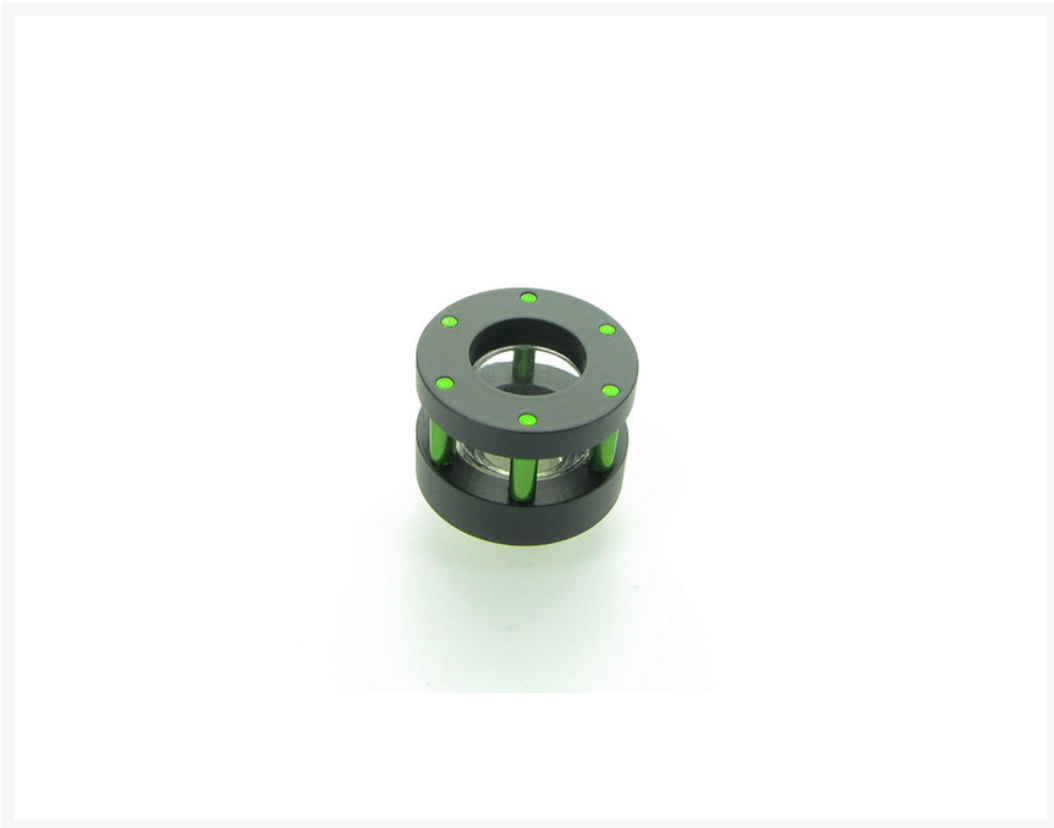




Monsoon Chain Gun Hardline Compression Fittings, 3/8" x 1/2" 4 Pack - Green

\$27.99

Product Images





MONSOON CHAIN GUN FITTING DIMENSIONS METRIC			
	13MM X 10MM	16MM X 10MM	19MM X 10MM
A	17.5	17.5	17.5
B	24.7	26.8	29

MONSOON CHAIN GUN FITTING DIMENSIONS INCHES			
	3/8 X 1/2	3/8 X 6/8	1/2 X 3/4
A	0.68	0.68	0.68
B	0.97	1	1.14

Short Description

Designed for Pro Modders, OEM System Builders, High End Servers and Workstations, or any build that requires mission critical reliability. Monsoon's new Hardline Premium Fittings for acrylic tube feature Hard/Lock for a connection you can count on.

Description

Designed for Pro Modders, OEM System Builders, High End Servers and Workstations, or any build that requires mission critical reliability. Monsoon's new Hardline Premium Fittings for acrylic tube feature Hard/Lock for a connection you can count on.

The Chain Gun design aesthetic is aimed squarely at builders looking for a compression fitting that makes a bold, in your face, take no prisoners, statement. The thematic design, with double gun metal black machined brass mounting rings holding six accent colored barrels, is a homage to excessive firepower. Think Predator or BFG and you're getting the picture.

Precision machined entirely from marine grade brass with antimicrobial silver barbs/bases so you can run pure distilled or deionized water without the need to add antimicrobial additives that can lower cooling performance. The barb/base also features an internal hex for easy and secure installation and removal, and the compression ring not only looks amazing--its unique design also makes gripping it with your fingers easy and totally pain free.

The available accent colors match Monsoon's full line of finishes—including all of our compression fittings, standard rotaries, light port rotaries, stop plugs, LED plugs, temp sensor plugs, Silver Bullet antimicrobial plugs, and reservoirs---so you can match, contrast, or accent with total confidence. The O-Rings are premium silicone for years of dependable worry free service and are slightly oversized for easy leak free installation in a wide range of products with industry standard G 1/4 threads. Monsoon's Hardline Premium fittings are also modular and fully interchangeable—between fitting styles and across tube types.

Features

FEATURES:

- Precision machined entirely from marine grade brass.
- Antimicrobial silver barbs/bases.
- Modular--fully interchangeable—between fitting styles and across tube types.
- Available in all 10 of Monsoon's colors and finishes so you can match or accent with all of our standard Rotaries, Light Port Rotaries, full line of plugs, and our full line of reservoirs.
- Industry standard G 1/4 threads and highest quality premium silicone O-rings.
- Barbs/Bases have knurled bottoms to grip blocks better. See pictures for details.
- Includes a black O ring AND a color matched UV O ring—your choice. (Chrome, Matte Black, and Black Chrome get a second black O ring).
- Available in Singles or budget friendly Four Packs.
- Available for two tube sizes—3/8" X 1/2" (13mm) and 1/2" x 5/8" (16mm).

Specifications

INCLUDED IN SINGLE PACK:

- One antimicrobial silver barb/base.
- One Compression Ring.
- One black 2.4mm thick high quality silicone G1/4 BSPP O ring.
- One color matched UV 2.4mm thick high quality G1/4 BSPP O ring. (Additional O rings or different colors can be purchased separately in 10 packs).
- One Molded Acrylic Lock Collar.
- Two molded high quality black lock collar seals.

INCLUDED IN FOUR PACK:

- Four antimicrobial silver barbs/bases.
- Four Compression Rings.
- Four black 2.4mm thick high quality silicone G1/4 BSPP O rings.
- Four color matched UV 2.4mm thick high quality G1/4 BSPP O rings. (Additional O rings or different colors can be purchased separately in 10 packs).
- Four Molded Acrylic Lock Collars.
- Eight molded high quality black lock collar seals.
- Free Wrench.

PLEASE NOTE:

The Hard/Lock capabilities of this fitting do not work the same way traditional push in type fittings do and require an additional step. Although they are not difficult to install, we highly recommend you watch the video linked below BEFORE you make this purchase.

Because of the thematic nature of the Chain Gun design, these fittings are very slightly larger in diameter as compared to a standard compression fitting. Although this should not be an issue with most products, you should check the included dimensions illustration just to be sure there will not be an issue with your blocks. The B dimension listed is the outside diameter of the fitting and, as a general rule, this number plus 1/16 inch (or 1mm) is the absolute minimum center to center distance for the ports on your intended block. As an example, if the listed dimension is 1 inch (25mm), then the minimum center to center port distance required for your block is 1 and 1/16th inch (26mm). Although this should not be a problem on most modern water cooling blocks, if you're at all concerned, we recommend going with the 3/8" x 1/2" (13mm).

WARRANTY:

Guaranteed against manufacturing defects for one (1) full year from your date of purchase. This warranty does not include customer damage to the finish or the product itself caused by over tightening or incorrectly applied tool force or use of fluids containing any abrasives or glycol. Water cooling has an inherent risk of damage to your computer parts from improperly selected or installed components; therefore, Monsoon is not responsible for any damage that might arise from the use of these products. We recommend leak testing your loop outside of your system for at least 24 hours.

Additional Information

Brand	Monsoon
SKU	CGH-3812-4-GR
Weight	0.2000
Fitting Type	Rigid Compression
Fitting Size	3/8" x 1/2"
Fitting Angle	Straight
Internet Reviews	<p>Hardline Premium Fittings:</p> <ul style="list-style-type: none">• http://geno.boxgods.com/Hardline_Premium_Fittings.mp4 <p>Mandrel and Measure Kits:</p> <ul style="list-style-type: none">• http://geno.boxgods.com/Hardline_Tools_mandrels_and_Measure.mp4• http://geno.boxgods.com/Hardline_Tools_mandrels_and_Measure_2.mp4• http://geno.boxgods.com/Hardline_Tools_mandrels_and_Measure_3.mp4 <p>Cutting Kit:</p> <ul style="list-style-type: none">• http://geno.boxgods.com/Hardline_Cutting_Kit.mp4 <p>Heat Gun / Bending Kit:</p> <ul style="list-style-type: none">• http://geno.boxgods.com/Hardline_Tools_Heatgun_Kit.mp4

