

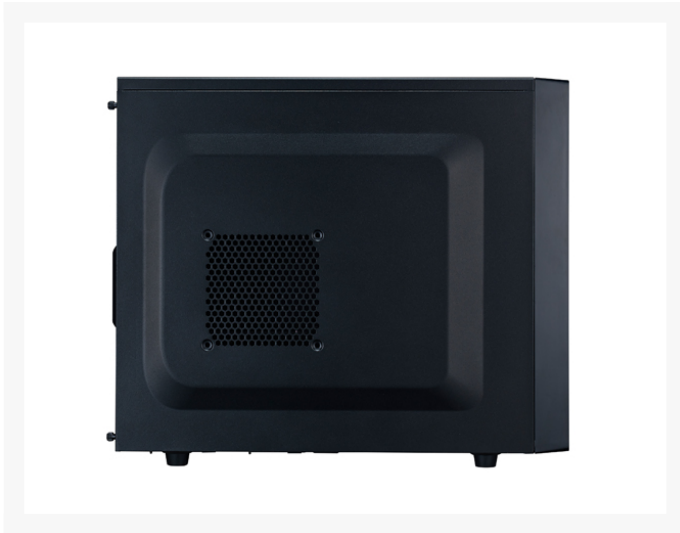


Cooler Master N200 Mini Tower Computer Case - Black

\$74.99

Product Images





Short Description

The N Series stands apart from the competition. It does so with a full array of exciting options that have been designed specifically with cooling performance in mind, especially liquid cooling. Its full mesh front panels and well-ventilated layout provide for a more abundant flow of air throughout the case.

N200 is cleverly designed to accommodate a 240mm radiator in the front of the chassis while still offering support for up to 5 fans and long graphics cards up to 355mm / 14in.

Description

The N Series stands apart from the competition. It does so with a full array of exciting options that have been designed specifically with cooling performance in mind, especially liquid cooling. Its full mesh front panels and well-ventilated layout provide for a more abundant flow of air throughout the case.

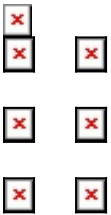
N200 is cleverly designed to accommodate a 240mm radiator in the front of the chassis while still offering

support for up to 5 fans and long graphics cards up to 355mm / 14in.

Features

Features:

- Edgy asymmetrical design with full mesh on the front panel
- Mini tower with great expandability that supports up to three 3.5" HDD and four 2.5" SSD
- Supports a 240mm liquid cooling radiator in the front
- Supports high-end graphics cards with a length of up to 355mm/14inch
- Supports air CPU cooler heights up to 160mm/6.3inch
- Supports SuperSpeed USB 3.0
- Removable dust filter under the PSU for easy maintenance



Specifications

Model NSE-200-KKN1

| | |
|-----------------------|---|
| Color | Midnight Black |
| Material | Plastic bezel with mesh, steel case body |
| Dimension | 202 x 378 x 445mm / 7.95 x 14.9 x 17.52 inch (W x H x D) |
| Weight | 4.3 kg / 9.5 lbs |
| M/B Type | microATX, Mini-ITX |
| 5.25" Drive Bay | 1 (Max. length of 5.25" device: 170mm / 6.7 inch) |
| 3.5" Drive Bay | 3 |
| 2.5" Drive Bay | 4 |
| I/O Panel | USB 3.0 x 1, USB 2.0 x 2, Audio in and out |
| Expansion Slots | 4 |
| Cooling System | Front: 120mm black fan x 2 (one XtraFlo is pre-installed) Rear: 120mm black fan x 1 (XtraFlo pre-installed) Side: 120mm fan x 1 (optional) Top: 120mm x 15mm fan x 1 (optional) |
| Power Supply | ATX PS2 (Max. length: 180mm / 7.1 inch) |
| Maximum Compatibility | CPU cooler height: w/o 120mm x 25mm side fan: 160mm / 6.3inch with 120mm x 25mm side fan: 135mm / 5.3inch *Side panel with stamping Graphics card length: 355mm / 14 inch |

Warranty 2 years

UPC Code 884102021862

Additional Information

| | |
|--------|---------------|
| Brand | Cooler Master |
| SKU | NSE-200-KKN1 |
| Weight | 10.0000 |
| Color | Black |

