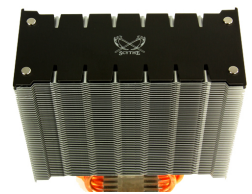
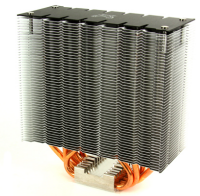


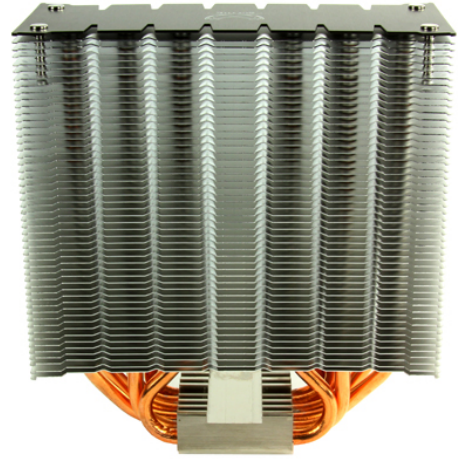
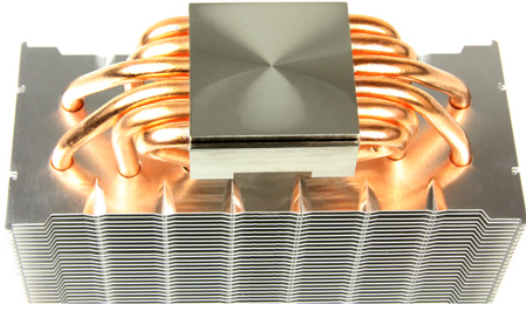


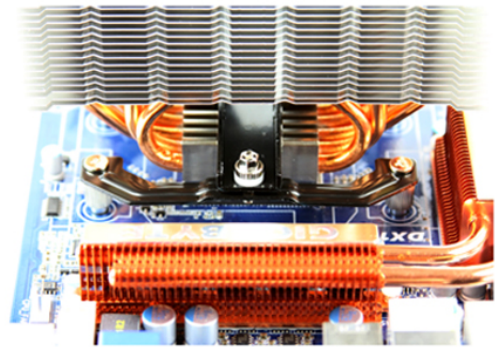
Scythe Ashura Universal CPU Cooler

Special Price
\$35.00 was
\$56.99

Product Images







Short Description

User-friendliness and a compact heatsink design while not sacrificing efficient cooling performance - pursuing this goal, Scythe engineers set out to develop the Ashura. The result is a CPU cooler shining with wide-spread compatibility to most current motherboard sockets while minimizing the risk of memory modules with tall heat sinks colliding with the Ashura.

Description

User-friendliness and a compact heatsink design while not sacrificing efficient cooling performance - pursuing this goal, Scythe engineers set out to develop the Ashura. The result is a CPU cooler shining with wide-spread compatibility to most current motherboard sockets while minimizing the risk of memory modules with tall heat sinks colliding with the Ashura. Its' from the ground-up newly developed mounting system realizes easy but reliable mounting to the majority of today's current, mainstream CPU sockets. Teamed up with the 140mm GlideStream fan sporting a max air flow of 165 m³/h makes the Ashura suitable for quiet as well as performance cooling, and can also be counted on as a reliable partner when overclocking is on the agenda.

Features

Asymmetrical Design

The asymmetrical layout of the base plate allows the Ashura to be mounted in various clearances to the memory modules, making the usage of memory modules with tall heatsinks possible. Compatibility to various sockets and motherboards is increased, and user-friendly, simple installation of the Ashura is realized.

Twin-Fan Installation

When developing the Ashura, the possibility for mounting a second fan was incorporated. The necessary spare pair of fan clips is therefore part of the accessory list. With a second fan helping, cooling performance can be further enhanced by applying the push & pull principal (The extra fan has to be purchased separately).

Newly Developed Mounting System

Another new feature can be seen is the Ashura's new mounting system. Based on the over-the-years experience of CPU cooler mounting systems and Scythe expertise, the Ashura mounting was designed with the keywords "simplicity" and "reliability" in mind.

GlideStream 140 PWM

The 140mm GlideStream PWM covers all areas of cooling. Able to work both very quietly as well as with max cooling performance, it forms a perfect team with the new Ashura CPU cooler.

Specifications

Cooler Specifications:

Model Name:

Ashura CPU Cooler

Model Number:

SCASR -1000

Compatibility:

Intel ®:

- Socket LGA2011
- Socket T / LGA775
- Socket LGA1150
- Socket LGA1155
- Socket LGA1156

- Socket LGA1366

AMD ®:

- Socket AM2
- Socket AM2 +
- Socket AM3
- Socket AM3 +
- Socket FM1
- Socket FM2
- Socket FM2 +

Please note that you will need the original backplate of the mainboard for mounting on motherboards with AMD socket . Please check before buying if it exists.

Overall dimensions:

145 x 65 x 161 mm / 5.71 x 2.56 x 6.34 inches

Total weight:

750 g / 26.46 oz (without fan)

Accessories:

2x Metal Assembly Clip (Intel) , 2x metal mounting clip (AMD) , 1x mounting rail , 4x screws for mounting clamps, 8x Screws for mainboard mounting , 2x screws for mounting , 1x spacer (775) , 4x plastic discs , 1x wrench, 4x fan terminals , backplate , thermal grease , installation Instructions

Material of Base Plate:

nickel-plated copper base (more info)

Fan specifications:

Model Name:

GlideStream 140 PWM (adjusted model)

Model no.:

SY1425HB12M -P

Fan Dimensions:

140 x 140 x 25 mm / 5.51 x 5.51 x 0.98 inch

Noise Level:

13 to 30.7 dBA

Air flow:

63-165 m³ / h / 37.37 to 97.18 CFM

Fan speed:

500 ± 300 rpm to 1300 rpm ± 10% (PWM controlled)

Static pressure:

1:47 ~ 10.0 Pa / 0:15 ~ 1:02 mmH² O

Additional Information

Brand	Scythe
SKU	SCASR-1000-D
Weight	2.0000
Color	Silver
Material	Copper/Aluminum
Fan Dimensions	140mm
Fan Connection	4-Pin PWM
Vendor SKU/EAN	812623020125
Special Price	\$35.00

