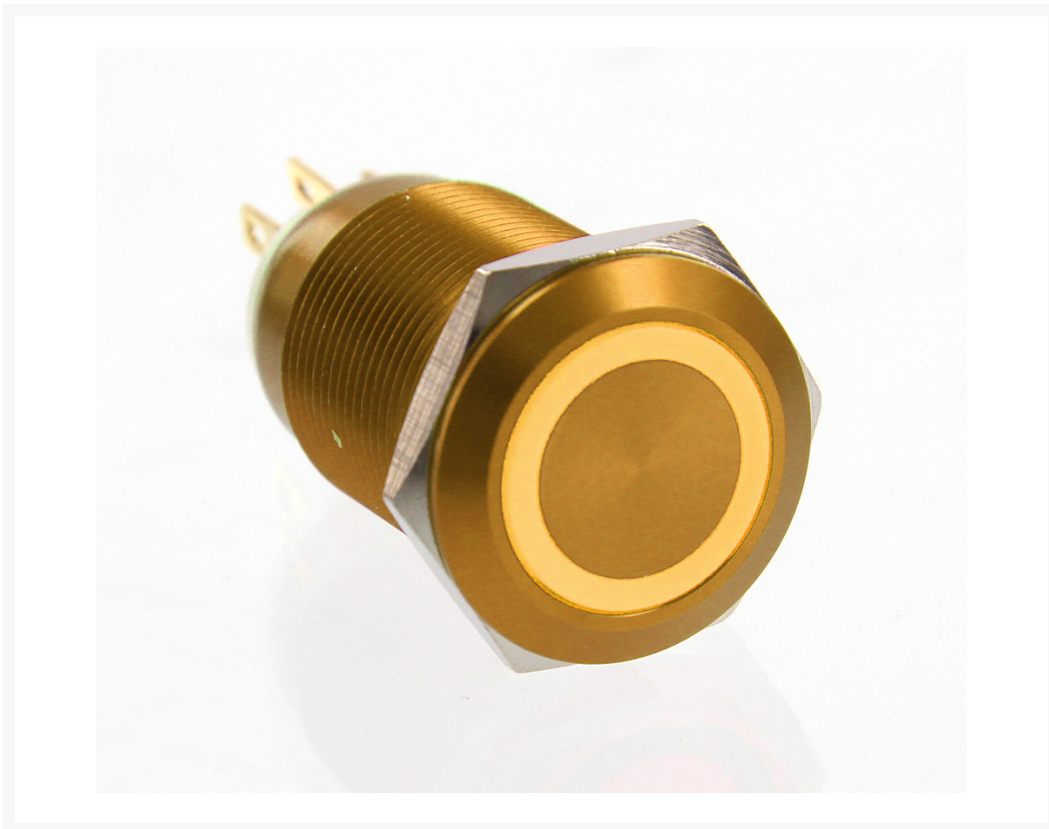




ModMyToys Anodized Illuminated Switch - 22mm Latching - Gold/Amber

\$13.95

Product Images





Shown With Optional Cable



Short Description

These new momentary and on/off switches are ideal switches for modding enthusiasts. When turned on, the ring around the push button illuminates in the specified color. In the case of momentary switches the illumination can always be on.

Description

All NEW ModMyToys anodized aluminum vandal switches!

These new momentary and on/off switches are ideal switches for modding enthusiasts. When turned on, the ring around the push button illuminates in the specified color. In the case of momentary switches the illumination can always be on. Easy to install and will fit on a regular 5.25 drive cover or wherever you chose to mount it.

Manufactured from Aluminum and then anodized, this extensive range of vandal resistant security switches are designed for use in potentially hostile environments, such as access control applications or, in the case of pc modders, powering up your case to "on" or for use as a reset button.

Features

- Install diameter: 19mm
- Switch rating: 3A/250VAC
- Shape: Flat head
- Function: Latching
- Led type: Ring illuminated
- Colors: Red, Blue, Yellow, Green, White, Orange)
- Voltage: 12V (Other voltage can be make to order: 1.8V to 250V)
- Terminal: 6 Pin terminal
- Crust material: stainless steel
- IP rating: IP65/IP67 can make to order
- Temperature: - 40 to 75 Degree

Specifications

- Max. Voltage: 250V
- Max. Current: 3A
- Protection Level: IP65
- Material: Gold anodized aluminum
- Install diameter: 19mm
- Shape: Flat head
- Approval: Rohs material
- Function: Latching (Push on, Push off)
- Contact configuration: SPDT (1NO1NC)
- Color: Amber Ring illuminated LED
- Voltage: 12V (Other voltage 2.8V to 250v)
- Terminal: 6 Pins Terminal



Additional Information

Brand	ModMyToys
SKU	MMT-SW22LAT-VAN-GDAM
Weight	0.1000
Color	Gold
Switch Type	Vandal (Latching)
LED Color	Amber
Material	Aluminum
Vendor SKU/EAN	0610696980380

