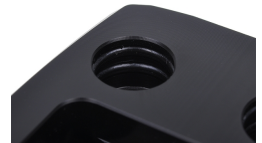




Alphacool GPX SLI Connector - Triple

\$33.50

Product Images



Montagebeispiel
(Example of installation)



Short Description

Fitted to the new GPX graphics cards, SLI bridges are now available.

Description

Fitted to the new GPX graphics cards, SLI bridges are now available.

But they aren't just simple SLI bridges: through the option to run LEDs through this SLI bridge, you can illuminate the Alphacool logo.

Up to 3 graphics cards can be cooled with the SLI connection, in which flow passes through the coolers in a row.

Installation is very simple using the included fittings. The special connectors have a ¼" thread on one side and a straight piece of pipe on the other side, which is simply plugged into the SLI bridge (double O-ring). This way it can still be installed if the coolers are already mounted.

Specifications

Compatibility: Alphacool NexXxoS GPX

Manufacturer: Alphacool

Material: Plastic

Slot spacing: 3

Scope of delivery:

- 1x Alphacool GPX SLI Connector - Triple
- 6x connectors

Notice

The SLI connectors may only be used to connect the same types of graphics cards. Alphacool takes no responsibility for use with different graphics cards, as there could be minimal differences in the spacing, causing the SLI connector to fit incorrectly and not lock or seal properly.

Additional Information

Brand	Alphacool
SKU	AC-12180
Weight	0.7000
Color	Black
Vga	AMD Radeon RX 6800XT Nitro+
Block Accessory Type	SLI Bridge
Fitting Finish	Black Chrome
Vendor SKU/EAN	4250197121804

