

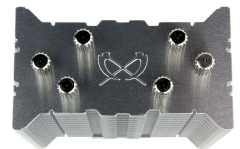
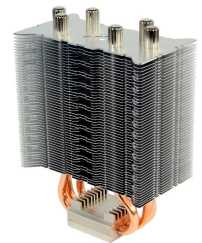
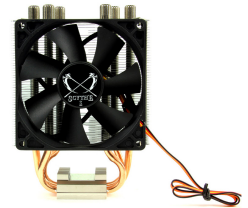
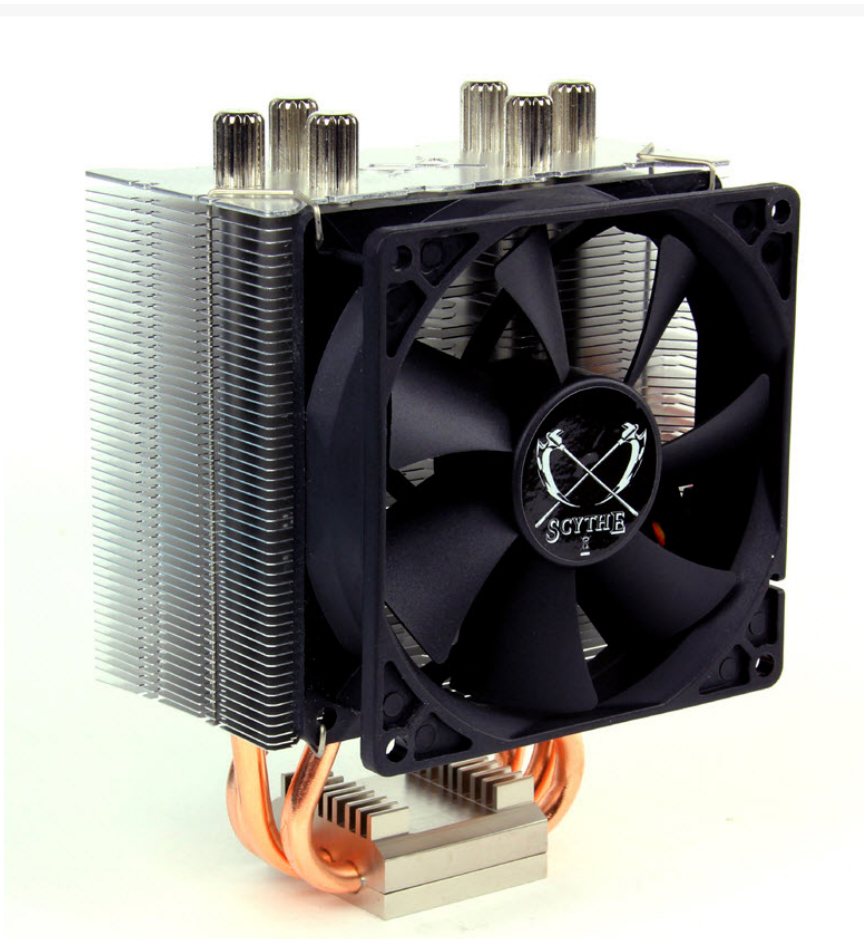


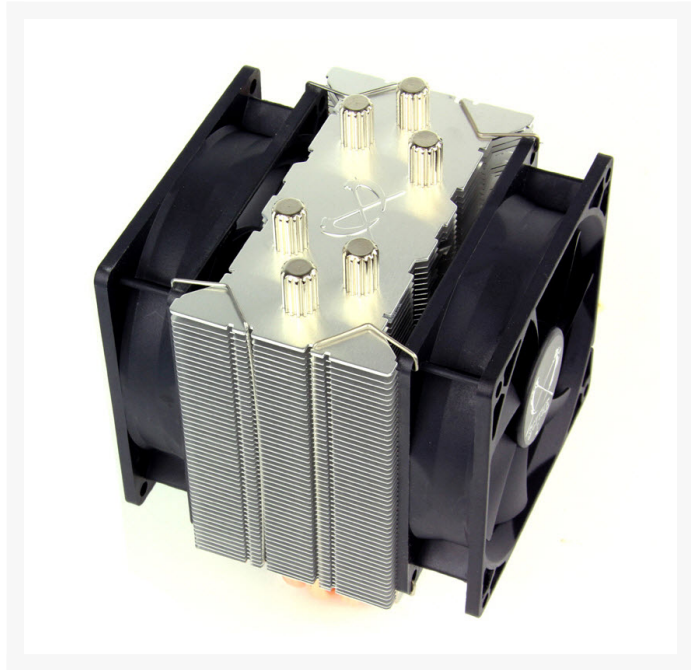
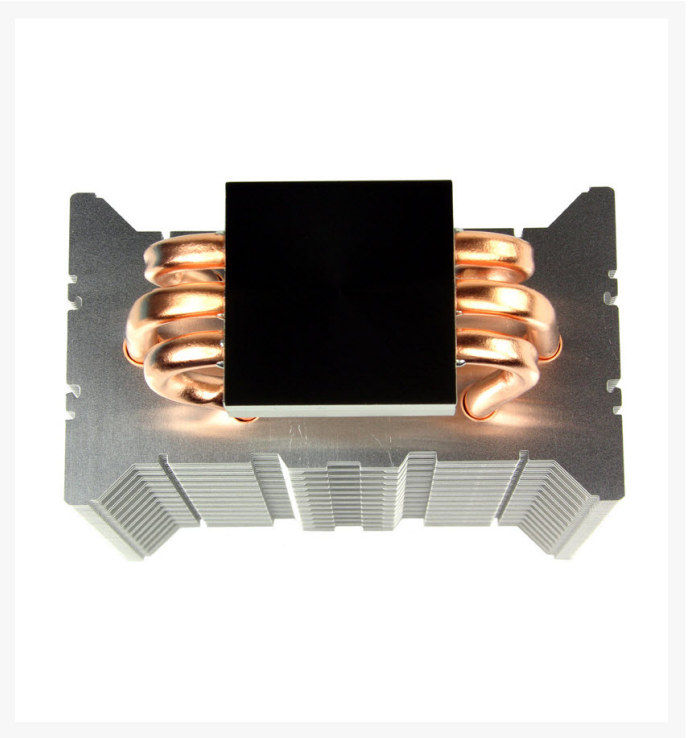
Scythe Tatsumi Compact Universal CPU Cooler with 92mm Fan

Special Price

\$24.00 was
\$29.95

Product Images







Short Description

Tatsumi is a budget cooler with a long compatibility list, without compromising on built-quality and performance. The Tatsumi is built with the highly efficient M.A.P.S. fin structure to optimally make use of airflow while minimizing drag. The mounting system, borrowed from the Kotetsu, guarantees easy and secure installation. Accompanying the Tatsumi is a PWM fan specially designed to operate quietly. The Tatsumi is compact in dimension with a maximum height of 146 mm, which makes it easy to find a home in nearly every type of PC case.

Description

Tatsumi is a budget cooler with a long compatibility list, without compromising on built-quality and performance. The Tatsumi is built with the highly efficient M.A.P.S. fin structure to optimally make use of airflow while minimizing drag. The mounting system, borrowed from the Kotetsu, guarantees easy and secure installation. Accompanying the Tatsumi is a PWM fan specially designed to operate quietly. The Tatsumi is compact in dimension with a maximum height of 146 mm, which makes it easy to find a home in nearly every type of PC case.

Features

Optimized Cooling Performance

The unique arrangement of the cooling fins (M.A.P.S. - cooling Fin Structure) combined with the special finish of the base plate make the Tatsumi a great performing cooler. Airflow is maximized with minimal resistance, resulting in a more quiet and efficient cooling operation.



Multi Fan Mount Structure

The design of the Tatsumi allows mounting it in two different positions, facilitating the set-up of Direct Airflow. Option is also available for mounting a second fan for maximum performance (second fan has to be purchased separately).



Easy Mounting Mechanism

The H.P.M.S. (Hyper Precision Mounting System) ensures a quick and secure installation of the cooler. It is now possible to dismount the heatsink without having to remove the motherboard.

Compact Dimensions



A huge amount of time was invested in developing the perfect balance between cooling area and the overall dimension of the heatsink when designing the Tatsumi. The result is a versatile cooler fitting inside PC cases with limited space without compromising performance.

High Hardware Compatibility

The strategic arrangement of the aluminum fins with the advantage of being a compact heatsink allows the users the freedom to choose for their motherboard and memory modules. Even memory modules or VRMs with extreme heatsink structures would not get in the way when mounting the Tatsumi.

Specifications

- » Model Name
Tatsumi CPU Cooler
- » Model Number
SCTTM-1000B
- » Intel® Compatibilty
Socket LGA775 , Socket LGA1150 , Socket LGA1155 , Socket LGA1156 , Socket LGA1366 , Socket LGA2011
- » AMD® Compatibilty
Socket AM2 , Socket AM2+ , Socket AM3 , Socket AM3+ , Socket FM1 , Socket FM2 , Socket FM2+ (NOTE: For mounting on motherboards with the AMD-Socket, the original back plate of the motherboard will be necessary. Please check prior to purchase.)

- » Overall Dimensions
102 x 146 x 59 mm / 4.01 x 5.74 x 2.32 (W x H x D) (excl. fan)
- » Weight
360 g / 12.69 oz (Heatsink only)
- » Base Plate Material
Nickel-plated Copper
- » Included Accessory
Mounting plate x 2 (Intel), mounting plate x 2 (AMD), mounting bar x 1, screws for clips x 4, mainboard screws x 8, mounting screws x 2, back plate spacer (Socket 775) x 1, washers x 4, wrench x 1, fan clips x 2, thermal grease, backplate, installation manual
- » Fan Model Name
Slip Stream 92 PWM
- » Fan Model Number
SY9225SL12M-P
- » Fan Dimension
92 x 92 x 25 mm / 3.62 x 3.62 x 0.98 mm
- » Noise Level
7.2 ~ 31.07 dBA
- » Air Flow
11.38 ~ 94.37 m³/h (6.70 ~ 55.55 CFM)
- » Fan Speed
300 rpm (±200) ~ 2,500 rpm (±10%)
- » Voltage / Current
DC 12V / 0.18A
- » Static Pressure
7.35 ~ 22.46 Pa / 0.12 ~ 1.56 mmH₂O
- » Bearing Type
Sleeve Bearing

Additional Information

Brand	Scythe
SKU	SCTTM-1000B
Weight	1.6000
Color	Silver
Material	Copper/Aluminum
Fan Dimensions	92mm
Fan Connection	4-Pin PWM
Vendor SKU/EAN	812623020101
Special Price	\$24.00

