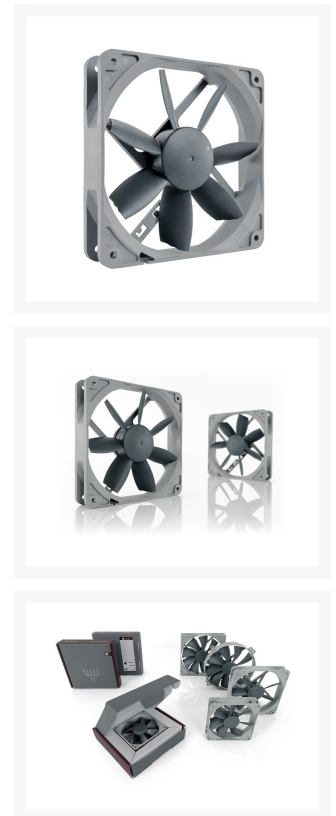




Noctua NF-S12B redux 700 120mm Quiet Case Fan

\$17.95

Product Images



Short Description

Specifically designed for low impedance case cooling applications, the classic NF-S12B is a long-standing favourite among enthusiast users around the world and helped to found Noctua's reputation as a top-tier manufacturer of premium quality quiet cooling components. The new redux edition reissues this award-winning model in a streamlined, accessibly priced package that has been reduced to the essential core: the NF-S12B premium fan..

Noctua NF-S12B redux 700 120mm Fan

Specifically designed for low impedance case cooling applications, the classic NF-S12B is a long-standing favourite among enthusiast users around the world and helped to found Noctua's reputation as a top-tier manufacturer of premium quality quiet cooling components. The new redux edition reissues this award-winning model in a streamlined, accessibly priced package that has been reduced to the essential core: the NF-S12B premium fan. Its industry grade SSO bearing, over 150.000 hours MTBF rating and full 6 years manufacturer's warranty make the NF-S12B redux a proven premium choice that provides trusted Noctua quality at an attractive price point. The extra slow 700rpm version is ideal for ultra-low-noise applications and highly noise sensitive users who demand near-silent operation.

Features



Proven NF-S12B design

Tens of thousands of quiet cooling enthusiasts around the globe swear by Noctua's classic NF-S12B. Thanks to its impressive quietness, excellent performance and impeccable quality, the NF-S12B has become an established reference for quiet 120mm fans.



Streamlined redux edition

The redux product line reissues some of Noctua's most popular, award-winning models by presenting them in streamlined, accessibly priced packages. All redux edition products are industry proven, time-tested models that helped to found Noctua's reputation as a first-tier supplier of premium grade low noise cooling equipment.



Designed for efficient case ventilation

Typical PC case ventilation applications require high airflow but only medium static pressure. The NF-S12B has been specifically designed for high airflow efficiency and low noise in order to provide best results in these so called low impedance applications.



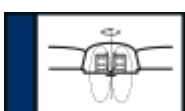
Bevelled Blade Tips

Reducing critical rotor stator interaction, Bevelled Blade Tips permit to combine extended leading edges and a higher blade surface area with quieter operation and thus form a cornerstone of the fan's outstanding efficiency.



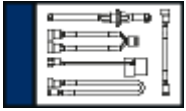
Smooth Commutation Drive 2

The latest version of Noctua's advanced Smooth Commutation Drive system ensures superb running smoothness by eliminating torque variations and switching noises. This makes the fan remarkably quiet even at very close distance.



SSO2 Bearing

Combining the proven concept of hydrodynamic bearings with an additional magnet that supports the self-stabilisation of the rotor axis, Noctua's time-tested SSO-Bearing technology has become synonymous with supremely quiet operation and exceptional long-term stability.



Optional Accessories

Users can choose from Noctua's wide range of optional accessories such as anti-vibration mounts, Low-Noise-Adaptors, y-cables, 3:4 pin adaptors or extension cables to upgrade redux edition fans according to their individual needs.



6 years manufacturer's warranty

Noctua fans are renowned for their impeccable quality and outstanding longevity. Like all Noctua fans, the redux edition models feature an MTBF rating of more than 150.000 hours and come with a full 6 years manufacturer's warranty.

Specifications

Size	120x120x25mm
Connector	3-Pin
Bearing	SSO
Rotational Speed (+/- 10%)	700 RPM
AirFlow	56.9 m ³ /h - 33.5 cfm
Acoustical Noise	6.8 dB(A)
Static Pressure	0.44mm H ₂ O
Max. Input Power	0.6 W
Max. Input Current	0.05 A
Voltage	12 V
MTBF	>150,000 h
Warranty	6 years
Scope of delivery	<ul style="list-style-type: none">• Fan• 4 Fan Screws
Warranty	6 years

Additional Information

Brand	Noctua
SKU	NF-S12B-R7
Weight	0.6000
Color	Gray
Fan Dimensions	120mm
Fan Width	25mm
Fan Connection	3-Pin
Fan Voltage	12 VDC
Fan RPM	700
Fan CFM	33
Fan Noise (dB)	8

