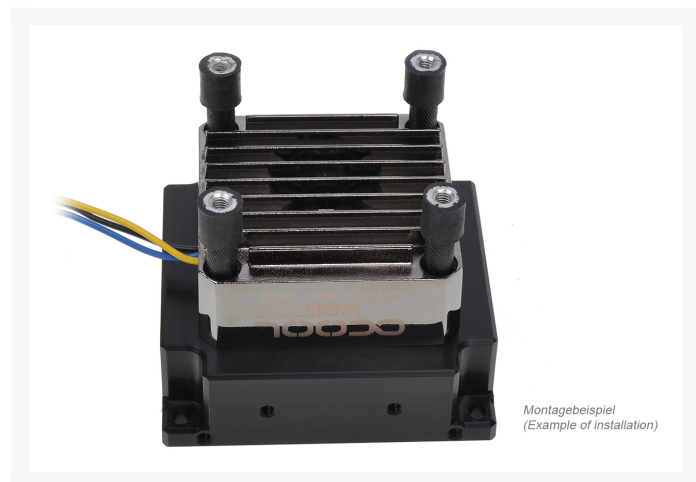
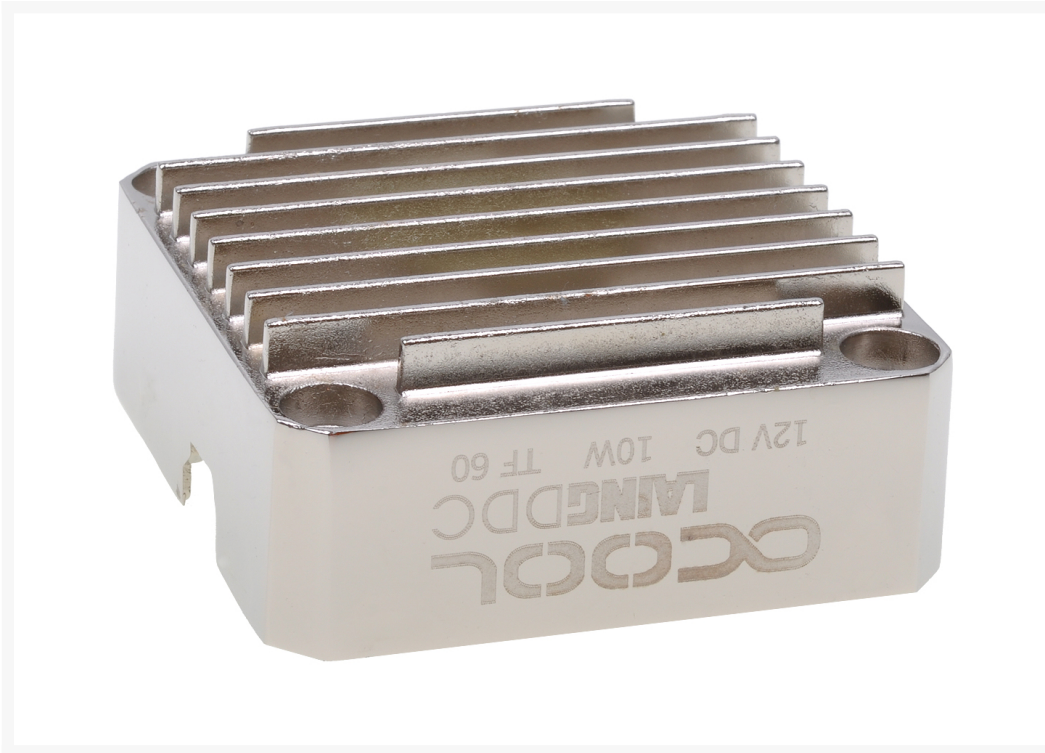




Alphacool Laing DDC Metal Bottom - Silver Nickel

Special Price
\$19.95 was
 \$24.15

Product Images



Description

Alphacool passive cooler for the Laing DDC pump is there now and offers more than just cooling.

This new housing promises a longer pump life. Through the cooling fins air flows is routed via an internal thermal pad directly to the pump circuit board.

Another feature is the included decoupling option . If a pump top with a M4 threaded mounting hole , such as the Alphacool Laing DDC acetal essay is present . The special M4 screws, in the head of the screw or the supplied decoupling are screwed which in turn is connected to the housing .

Available in black nickel and silver nickel version.

Specifications

Technical details :

- Dimensions: 61.7 x 61.7 x 26,1mm
- Material: Brass
- Color: silver nickel

Scope of delivery:

- 1x Alphacool Laing DDC bottom metal - silver nickel
- 1x Thermal
- Decoupling
- mounting material

Additional Information

Brand	Alphacool
SKU	AC-13172
Weight	1.2500
Color	Silver
Pump Type	DDC
Vendor SKU/EAN	4250197131728
Special Price	\$19.95

