

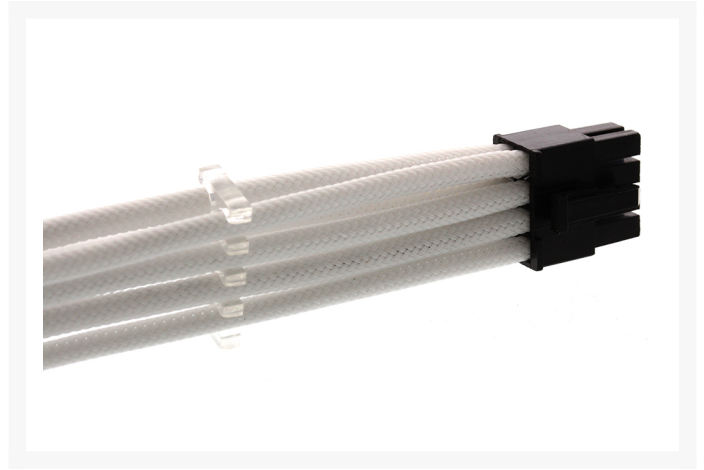


ModMyToys Allure Premium High Density 4mm Sleeving - White

\$0.39 As low as
\$0.20

Product Images





Short Description

ModMyToys Ållûre 4mm sleeving is a premium high density, tight weave PET sleeve designed to cover all the bases when doing single braid (uni-sleeve) or 3-wire fans. Offered at a great price, Ållûre is perfect for those that will use hundreds of feet to custom sleeve their entire PSU. This easy to use sleeve expands 50% and has a lush vibrant shine to its color when contracted.

Description

Organizing your cables and sleeving your wires has become an essential skill if you are serious about showcasing your builds. This can only be partially successful when using lesser sleeveings on the market. Today's system builds and modders require the most premium materials they can get the that will hide those ugly PSU wires, and turn their rigs, into works of art. This requires a very tight weave sleeve that is easy to work with, offered in a rainbow or colors, and can be used for single sleeving 16AWG/18AWG wires and 3-wire 26 AWG fan cables, all with the same sleeve.

ModMyToys Ållûre 4mm sleeving is a premium high density, tight weave PET sleeve designed to cover all the bases when doing single braid (uni-sleeve) or 3-wire fans. Offered at a great price, Ållûre is perfect for those that will use hundreds of feet to custom sleeve their entire PSU. This easy to use sleeve expands 50% and has a lush vibrant shine to its color when contracted. ModMyToys Ållûre is offered in the following colors:

- Black
- White
- Red
- Blood Red
- UV Blue
- Light Blue
- Dark Green
- UVGreen
- UV Orange
- Yellow
- Silver
- Grey
- Carbon

If you want the best you need to go with ModMyToys Ållûre Premium grade sleeve!

Sleeving is sold by the foot!

Features

0

Specifications

| | |
|---------------------------|------------------------------|
| Material | Polyester (PET) |
| Working Temperature Range | - 75°C ~ 150°C |
| Flammability | VW-1 |
| Melting Point | 250°C±5 |
| Approval | UL E317507, RoHS, CSA, REACH |
| Normal OD | 4.0±1mm |
| Max Expandable OD | 6.0±1mm |
| Diameter of Monofilament | 0.20±0.01mm |

| | |
|------------------|---------|
| Flattened Width | 4.0±1mm |
| Length per Spool | 500m |

Additional Information

| | |
|-------------|----------------|
| Brand | ModMyToys |
| SKU | MMT-ALLURE-4WT |
| Weight | 0.0200 |
| Color | White |
| Sleeve Size | 4mm |
| Material | PET |

