

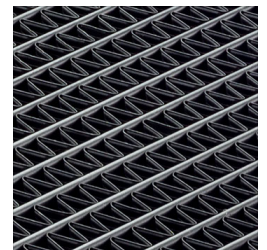
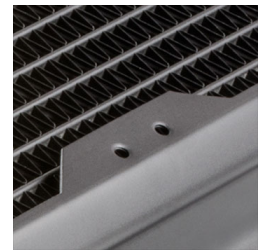
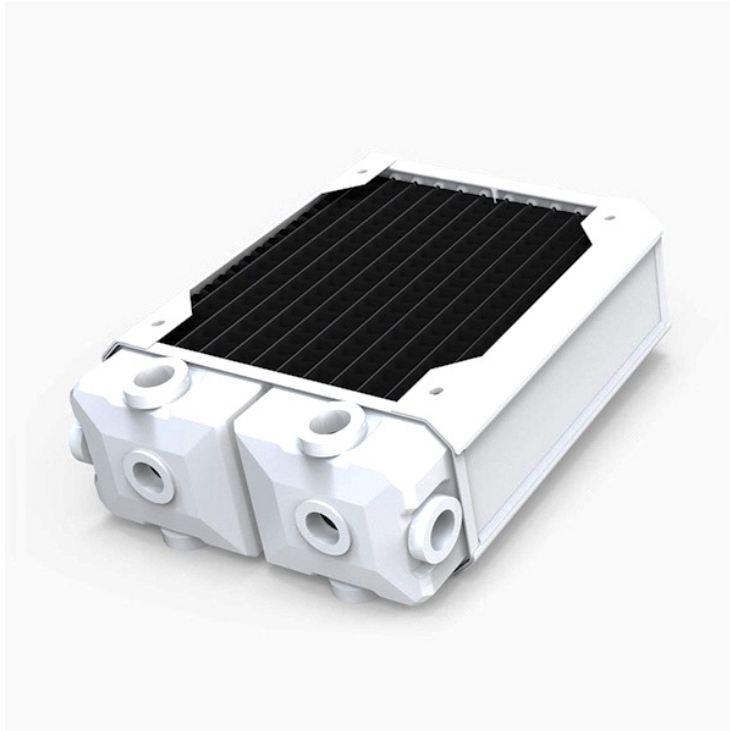


HARDWARE LABS

# Hardware Labs Black Ice SR2 Multiport Satin White Radiator - 120mm

\$69.95

## Product Images



## Short Description

---

The Black Ice® SR2™ MP delivers the next level in ultra-stealth PC radiator performance. Bringing to bear the new Black Ice® SR2™ Xtreme+ platform, the SR2™ 120 MP utilizes 3-rows of air pressure optimized copper fins, complemented with high internal flow tubing to bring class-leading cooling capacity and performance.

## Description

---

The Black Ice® SR2™ MP delivers the next level in ultra-stealth PC radiator performance. Bringing to bear the new Black Ice® SR2™ Xtreme+ platform, the SR2™ 120 MP utilizes 3-rows of air pressure optimized copper fins, complemented with high internal flow tubing to bring class-leading cooling capacity and performance.

## Features

---



Width: 133 mm Height: 159 mm Thickness: 60 mm

- Built-in 8-PORT Inlet/Outlet manifold system
- 120 mm x 1 fan Xtreme+ form factor 3-row radiator
- 158mm x 133mm x 60mm (L x W x H)
- 9 FPI 45 Micron Copper Fins
- Optimized for sub-800 rpm ultra-stealth fans
- Supercruise™ optimizations for scalable performance with higher speed fans
- 50% more tubing area than the Black Ice® SR1-120
- Increased internal coolant flow rates optimized for multi-stage cooling configurations
- Standard G 1/4" inlet/outlet fittings
- Standard M4 mounting threads
- Compatible with Black Ice® Xtreme, Black Ice® GTX® 120 and Black Ice® SR1® 120 radiators
- Custom Satin White™ high quality finish
- Fully ROHS Compliant
- 100% Made from conflict-free materials
- Industry standard Black Ice® quality
- Lifetime warranty against manufacturing defects\*
- 6 Delrin stop plugs pre-installed + 2 in the packaging.

\* Limited warranty information: <http://hardwarelabs.com/sr2/warranty>

\*\* radiator shown with optional push fittings

## Specifications

---

**Recommended Capacity** Stealth Supercruise 8-Core CPU

**GPU SLI/Crossfire**

**FANS**

SR2-120 MP	420W	■	■	■	1	1 X 120mm
SR2-240 MP	950W	■	■	■	TRIPLE	2 X 120mm
SR2-360 MP	1500W	■	■	■	QUAD	3 X 120mm
SR2-480 MP	2000W	■	■	■	QUAD	4 X 120mm
SR2-140 MP	500W	■	■	■	1	1 X 140mm
SR2-280 MP	1100W	■	■	■	TRIPLE	2 X 140mm
SR2-420 MP	1800W	■	■	■	QUAD	3 X 140mm
SR2-560 MP	2350W	■	■	■	QUAD	4 X 140mm

Operating conditions: 25C ΔT ITD, 7 LPM coolant flow, 2 m/sec air velocity (approx. 60 CFM fans). (Results may vary according to cooling system components.)

SLI and Crossfire are trademarks or registered trademarks of their respective holders.

## Additional Information

Brand	Hardware Labs
SKU	SR2120-F2PW
Weight	6.0000
Color	White
Radiator Size	120 (1 x 120mm)
Radiator Thickness	60mm
Vendor SKU/EAN	4806518485058



SR2 is a popular radiator choice- the Hardware Labs build quality and limited lifetime warranty, the only Black Ice radiator with multiple ports the absence of which can be a deal breaker for some people. The extremely low liquid flow restriction is also on the other end of the spectrum compared to other currently available Black Ice radiators. So if you are a fan of their radiators, they have made sure to have the SR2 offer enough to distinguish itself from the other offerings. It performs well too, especially with fans at low-medium speeds but fares fairly well throughout the board.

To Read More Click "[HERE](#)"

Internet Reviews

