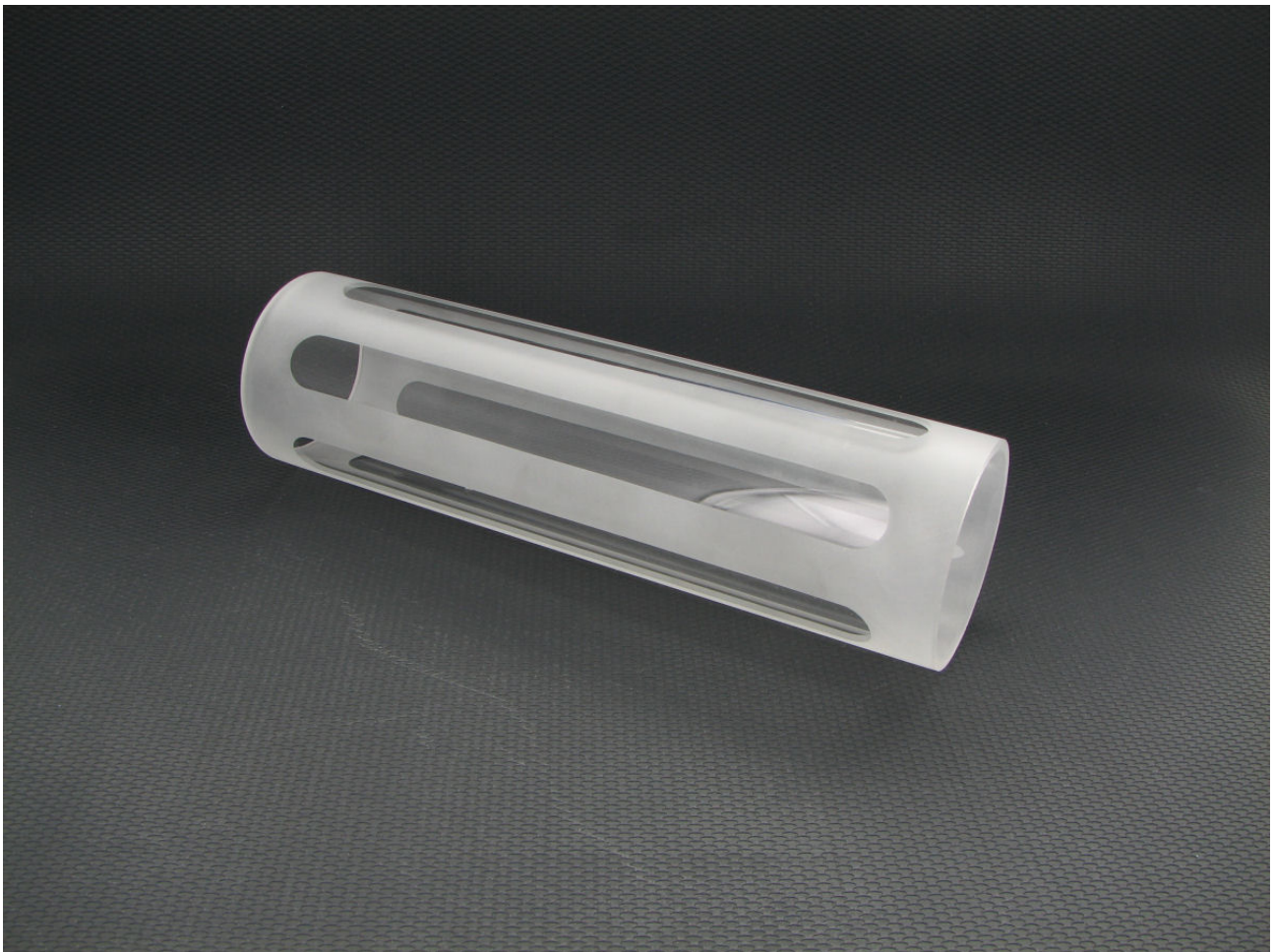




# Monsoon MMRS Frosted Reactor Core Acrylic Tube 200mm - Clear

\$15.95

## Product Images



## Short Description

---

Available in 6 lengths from 50mm to 300mm in 50mm increments—2" to 12" in 2" increments—they are matched to all 6 of our tension rod lengths. As an example, if you are using 100mm and 150mm reservoir tube segments in your reservoir configuration, you will need 1 set each of 100mm and 150mm Tension Rods. Those part numbers are MMRS-TR-XXX-XX where XXX is the length in MM and XX is a color place holder. MMRS-TR-150-RD are 150mm long red tension rods as an example.

## Description

---

### Monsoon Modular Reservoir System

Monsoon's new Modular Reservoir System allows you to configure exactly the reservoir you need for your build—no more forcing your build to fit around an off the shelf, one-size-fits-all reservoir. All of the components are sold separately allowing you to mix and match different end caps, couplers, tension rods, tube lengths, mounting options, fill and drain ports, pump options, and lighting.

Because the system is FULLY modular and every component is sold separately, you only buy the components you need for the reservoir you actually want for your dream rig. This saves you money now and down the road when you're upgrading your cooling loop or reusing the reservoir in a new build—just add the few components you need for the new build without buying an entirely new reservoir.

Assembly is straight forward and all the components are made of top quality materials with excellent fit and finish. Check out the how-to video links below for an overview of MMRS and videos on using the different components. Unleash your creativity and set your imagination free with MMRS.

### MMRS-FAT-XXX-XX

This 60mm diameter ACRYLIC TUBE is 200 mm long—installed length.

This 60mm diameter ACRYLIC TUBE is frosted in our "Warp Core" pattern.

Available in 6 lengths from 50mm to 300mm in 50mm increments—2" to 12" in 2" increments—they are matched to all 6 of our tension rod lengths. As an example, if you are using 100mm and 150mm reservoir tube segments in your reservoir configuration, you will need 1 set each of 100mm and 150mm Tension Rods. Those part numbers are MMRS-TR-XXX-XX where XXX is the length in MM and XX is a color place holder. MMRS-TR-150-RD are 150mm long red tension rods as an example.

Currently available in Solid Black, Blue, Blood Red, Clear, UV Green, UV Blue, and Solid White. There are also two frost patterns (solid frost and warp core frost) available in Clear, UV Blue, and UV Green.

Frosted versions are available in Clear, UV Green, and UV Blue.

Be sure to watch our how-to assembly videos below for more information on how and where to use this part in your reservoir build.

---

Brand	Monsoon
SKU	MMRS-FAT-200-CL
Weight	1.0000
Color	Frost
Reservoir Type	Tube Res
Reservoir Accessory Type	Tube
Tube Res Length	200mm



## Additional Information