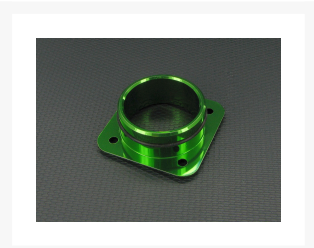
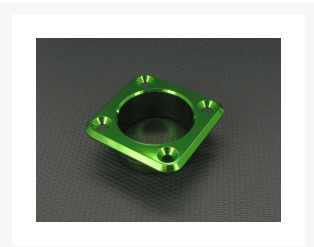
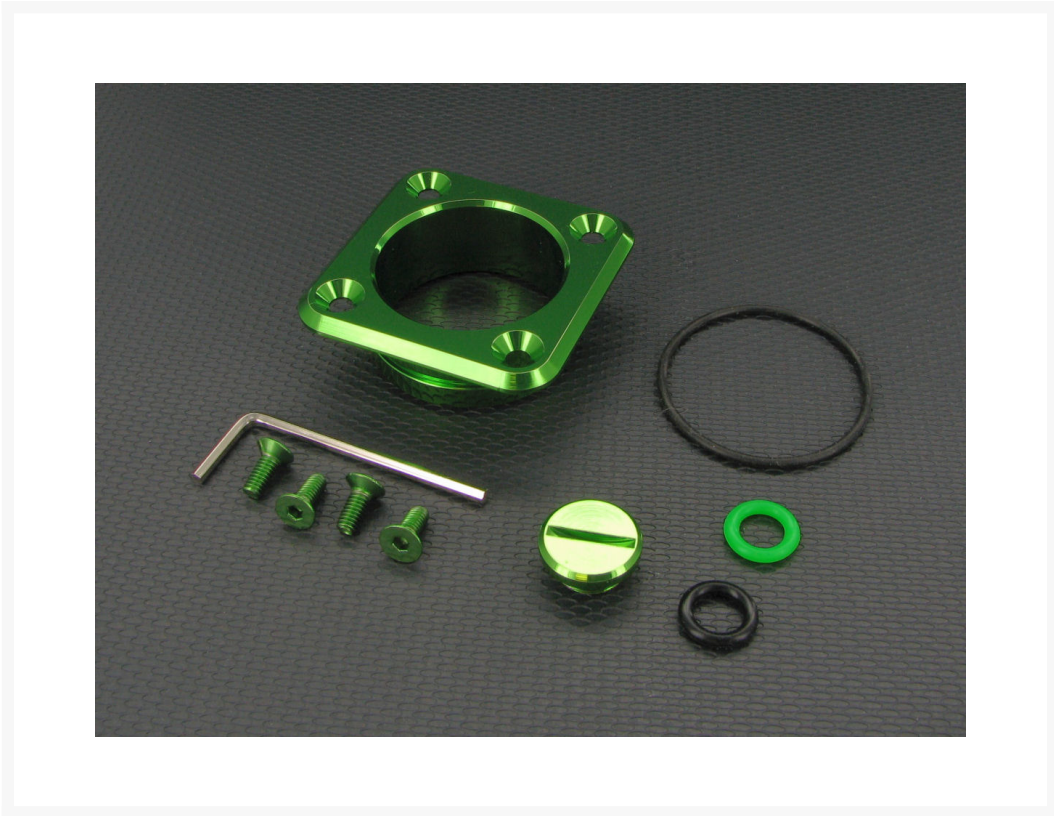


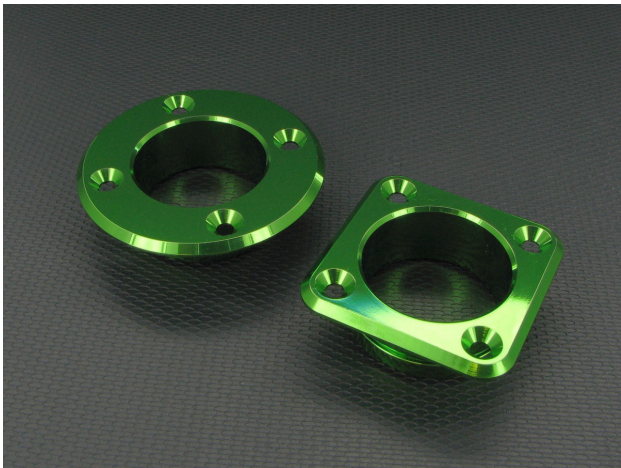
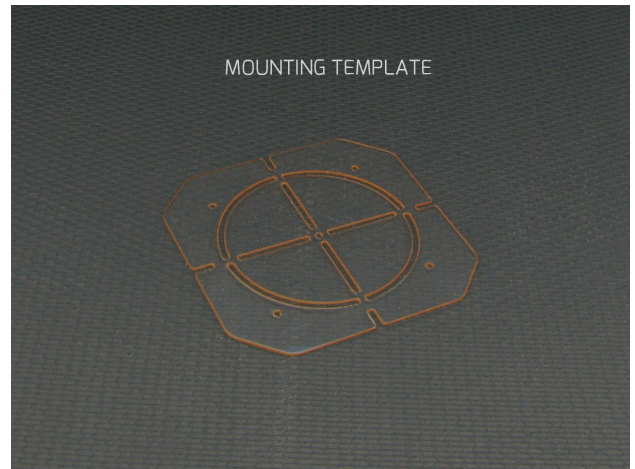
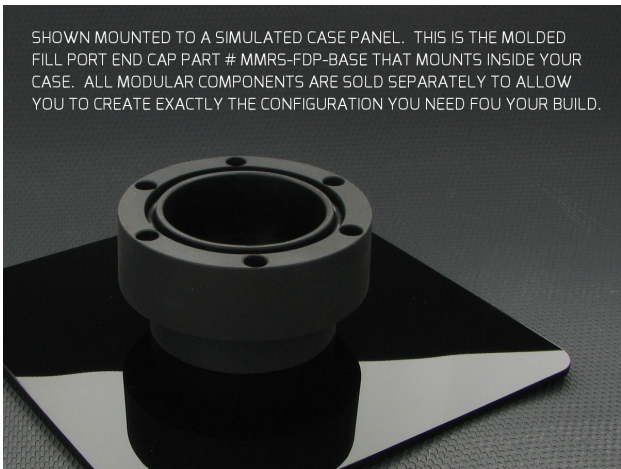
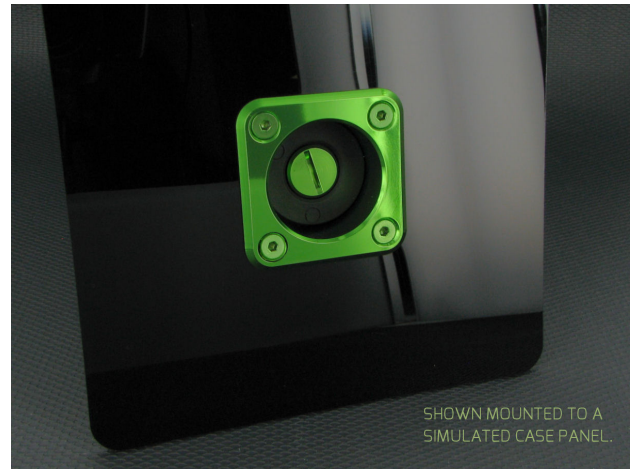
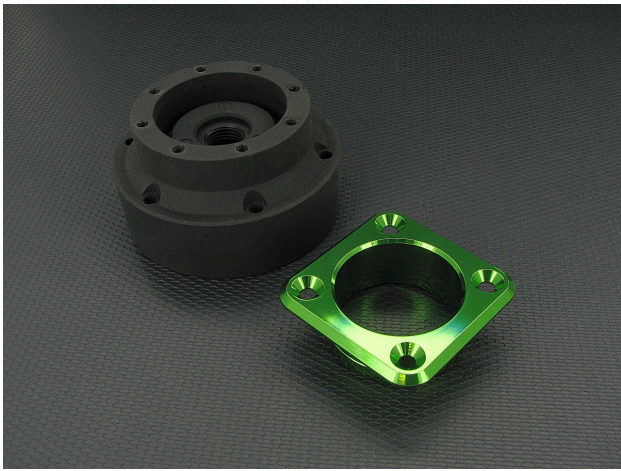


Monsoon MMRS Fill Drain Port Square Cap - Green

\$11.25

Product Images





Short Description

Precision machined from aluminum, this FILL DRAIN PORT SQUARE CAP is the cap that goes on the outside of your case when you install an external fill or drain port. It is designed to work with the molded Fill/Drain Port End Cap part number MMRS-FDP-BASE (sold separately) which greatly simplifies filling and draining water

from your loop. Topping off and bleeding air are also much much easier. It also features a telescoping side wall seal which keeps any over fill from splashing down inside your case and accommodates case thicknesses of 1mm to 6mm.

Description

Monsoon Modular Reservoir System

Monsoon's new Modular Reservoir System allows you to configure exactly the reservoir you need for your build—no more forcing your build to fit around an off the shelf, one-size-fits-all reservoir. All of the components are sold separately allowing you to mix and match different end caps, couplers, tension rods, tube lengths, mounting options, fill and drain ports, pump options, and lighting.

Because the system is FULLY modular and every component is sold separately, you only buy the components you need for the reservoir you actually want for your dream rig. This saves you money now and down the road when you're upgrading your cooling loop or reusing the reservoir in a new build—just add the few components you need for the new build without buying an entirely new reservoir.

Assembly is straight forward and all the components are made of top quality materials with excellent fit and finish. Check out the how-to video links below for an overview of MMRS and videos on using the different components. Unleash your creativity and set your imagination free with MMRS.

MMRS-FDP-SC-XX

Precision machined from aluminum, this FILL DRAIN PORT SQUARE CAP is the cap that goes on the outside of your case when you install an external fill or drain port. It is designed to work with the molded Fill/Drain Port End Cap part number MMRS-FDP-BASE (sold separately) which greatly simplifies filling and draining water from your loop. Topping off and bleeding air are also much much easier. It also features a telescoping side wall seal which keeps any over fill from splashing down inside your case and accommodates case thicknesses of 1mm to 6mm.

Color matched to all 10 Monsoon color finishes used on our full line of Free Center, Carbon, and Chain Gun compression fittings for hard and soft tube, as well as our full line of Rotaries, Light Port Rotaries, specialty plugs, etc.

Also comes in a round version (MMRS-FDP-RC-XX).

Includes color matched stainless counter sunk socket head cap screws, a telescoping side wall O ring seal, a color matched stop plug, 2 plug O rings, a mounting template, and a 5mm drill bit for mounting holes.

Included

- 1 machined aluminum cap.
- 4 color matched stainless counter sunk socket head cap screws.
- 1 side seal O ring.
- 1 color matched stop plug.
- 2 stop plug O rings—one color matched, one black.
- 1 drill bit 5mm.
- 1 mounting template.
- Assorted wrenches

Be sure to watch our how-to assembly videos below for more information on how and where to use this part in your reservoir build.

Additional Information

Brand	Monsoon
SKU	MMRS-FDP-SC-GR
Weight	0.3000
Color	Green
Reservoir Type	Tube Res
Reservoir Accessory Type	Tube Cap

