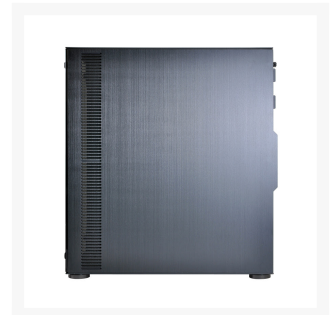




LIAN LI PC-08WX Aluminum ATX Mid Tower Computer Case - Black

\$379.95

Product Images







Short Description

LIAN LI PC-08WX Aluminum ATX Mid Tower Computer Case - Black

Description

The PC O8WX is - as usual at Lian Li - completely manufactured of aluminum premium Cube, whose left side portion and the Front Full consist of visually stunning tempered glass plates. In combination with the configurable LED interior lighting this provide a stunning look, especially when using very handsome

hardware. However, the noble cube convinces not only by outward appearances, but thanks to support for ATX or even E-ATX motherboards suitable to 272 mm width also ideal for very high-performance components that can be thanks to the large viewing window, however, perfectly set the scene.

The PC O8WX cube used for optimum cooling a proven double-chamber design, through which the interior is divided into two distinct areas separated. So the available space can not only be optimally utilized, even when the major PC O8WX visibility and the excellent cooling is accommodating the respective components in different regions benefit. The left pane is reserved for motherboard, graphics card and CPU cooling or water cooling components, while all media, cable and the ATX power supply is shifted to the right pane. The latter must be there all the 298 mm long and a modular HDD cage takes a total of six 3.5-inch drives and two other 2.5-inch HDDs / SSDs.

The left pane contains the nice looking system components and can accommodate up to 370 mm long graphics cards (without reservoir) and 170 mm high CPU cooler. Cooling is achieved here by a pre-installed at the rear 120 mm fan and two optional 120 mm fan in the lid. There can be installed alternatively an up to 240 mm large dual radiator. The separated second chamber is however directly cooled by three pre-installed on the front 120-mm fans, which may also give way to a 360-mm triple-radiator and preloaded by two HDD cage or on the rear side 120 mm fan, the pull cold air directly on the drives, and warmed transported away to the outside.

For easy cleaning removable dust filters are located both on the lid and the side of the ventilation opening of the three-suction front fan. Over several rubber openings in the partition to which even the motherboard is fitted, all cables can be passed through cleanly, so that a neat cable management a breeze. For high connectivity also provides the easy-access I / O panel on the lid with 4x USB 3.0 ports as well as one audio in / out port. A special feature of the PC-O8WX is also the harmonizing perfectly with the viewing windows LED interior lighting, consisting of three LED strips and an internal RGB controller with three accessible via the rear panel knobs, through which at any time can be set an individual color.

Specifications

Model	PC-O8X
Case Type	Mid Chassis
Dimensions	(W)341mm (H)428mm (D)404mm
Color	Black
Front Panel	Tempered Glass
Side Panel	Tempered Glass
Body Material	Aluminum
Net Weight	9.5kg

5.25" Drive Bays	None
Drive Bays	3.5" HDD x6 2.5" HDD x2
Expansion Slot	8
M/B Type	ATX Micro-ATX E-ATX(322mmx272mm)
System Fan	Front:120mm fan x3 Rear:120mm fan x1 HDD Rack:120mm fan x2 Top:120mm fan x2(Optional)
I/O Ports	USB3.0 x 4 HD Audio
Maximum Compatibility	VGA length: 370mm PSU length: 298mm Cooler height: 170mm
Space of Radiator	Top: 120 x 240x 54 mm Front: 120 x 360 x 70 mm
PSU Type	ATX PSU
LED	LED RGB Color Changing Kit (LED50RGB-2)

Additional Information

Brand	Lian-Li
SKU	PC-08WX
Weight	41.0000
Color	Black
Chassis Form Factor	Mid-Tower
Side Panel	Window
Material	Aluminum

