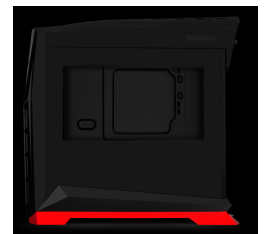
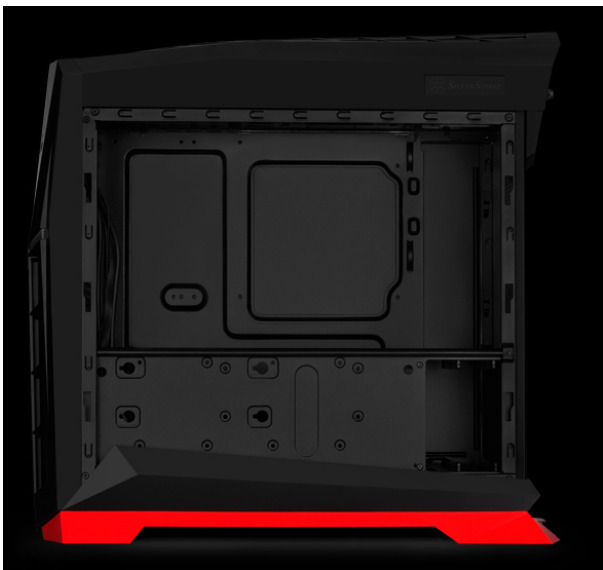
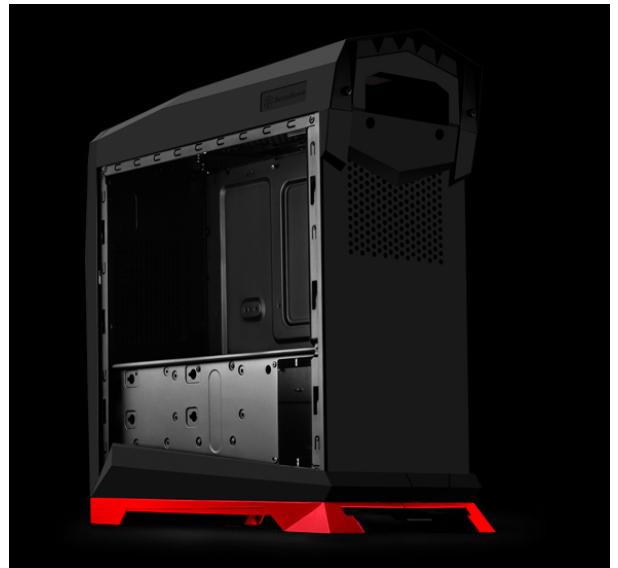
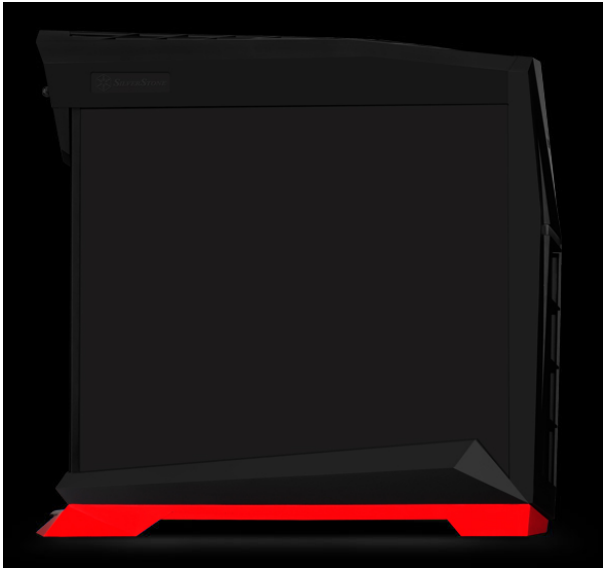
 SilverStone Raven X
Series RVX01 ATX Case w/
Window - Black/Red

\$99.99

Product Images





Short Description

After completing the evolutionary RAVEN RV05 with 5.25" drive bay design completely removed, the RAVEN team created another forward thinking line of cases with the introduction of the "RAVEN X" subcategory. This line will not only retain the essence of what made the original RAVEN series great with features such as signature aggressive styling and 90 degree rotated layout, but also cater to enthusiasts looking for more exciting designs in an entry-level price point.

Description

After completing the evolutionary RAVEN RV05 with 5.25" drive bay design completely removed, the RAVEN team created another forward thinking line of cases with the introduction of the "RAVEN X" subcategory. This line will not only retain the essence of what made the original RAVEN series great with features such as signature aggressive styling and 90 degree rotated layout, but also cater to enthusiasts looking for more exciting designs in an entry-level price point. With the smallest ever footprint for a ATX RAVEN tower case, the RVX01 has remarkably accommodating interior that can easily fit large ATX motherboards up to 12" x 11", full size graphics card, four 2.5"/3.5" drives, and spaces for up to three radiators. From the factory, the case will come fully equipped with three of SilverStone's famed Air Penetrator fans for class-leading thermal performance and easy to reach filter for easy maintenance. If you are looking to build an attractive, relatively compact and powerful PC on a budget, the RVX01's combination of high affordability, top-level cooling ability, and flexible layout will fulfill the task beautifully.

Features

- Signature RAVEN styling touches
- 90 degree motherboard mounting from legendary RAVEN [RV01](#)
- Three 120mm Air Penetrator fans included for sublime vertical air cooling
- Positive pressure design for excellent cooling/quietness and dust-prevention
- Quick access filter for convenient maintenance
- Support up to three sets of liquid cooling radiators

Specifications

Model No.

- SST-RVX01BR (black with red trim)
- SST-RVX01BR-W (black with red trim + window)
- SST-RVX01BA-W (black with blue trim + window)
- SST-RVX01BV-W (black with green trim + window)

Material

- Plastic outer shell, steel body

Color

- Black/Red

Motherboard

- ATX (up to 12" x 11"), [Micro-ATX](#)

Drive Bay

- External: None
- Internal: 2.5"x 4 or 3.5"x 4

Cooling System

- Front: 120mm fan slot x 1
- Top: 120mm fan slot x 1
- Bottom: 120mm Air Penetrator x 3, 1200±10% rpm, 19.7dBA

Expansion Slot

- 7

Front I/O Port

- USB 3.0 x 2
- Audio x 1
- MIC x 1

Power Supply

- Optional [PS2\(ATX\)](#)

Expansion Card

- Compatible up to 13.7", width restriction * - 4.92"~5.91"

Limitation of CPU cooler

- 162mm or 159mm (window)

Dimension

- 215mm (W) x 485mm (H) x 500mm (D) , 52.1 liters

* Depending on installed drives

Additional Information

Brand	SilverStone Technology
SKU	CS-RVX01BR-W
Weight	7.3000
Color	Black
Chassis Form Factor	Mid-Tower
Side Panel	Window
Material	Plastic
Vendor SKU/EAN	844761012649

