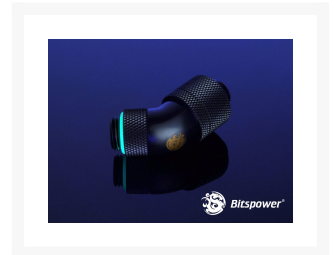




Bitspower G1/4 Matte Black Dual Rotary 45-Degree Compression Fitting Ultimate for ID 7/16" OD 5/8"

\$18.50

Product Images



Short Description

BP-MB45R2CPF-CC6 G1/4" Matte Black Dual Rotary 45-Degree Compression Fitting CC6 - For ID 7/16" OD 5/8"

Description

BP-MB45R2CPF-CC6 G1/4" Matte Black Dual Rotary 45-Degree Compression Fitting CC6 - For ID 7/16" OD 5/8" Tube

These new G 1/4" Dual 45 degree angle adapters are perfect for tight spaces and change the direction of your water input or output without affecting flow. These have a lower restriction For 45 Degree Application. With 360 degree rotary fitting on one end you can secure the connection yet still twist the direction of the fitting to any angle you desire. These fittings feature a male G 1/4 thread on one end and a rotary compression type fitting on the other end. No more kinked tubing! These are the bomb!

Features

- True Hi-Flow Design.
- Hi Quality Brass Material.
- 45-Degree Type With 360-Degree Rotation..
- High durability Matte Black finished.
- Hiding O-Ring Design
- RoHS Compliant

Specifications

- Thread : G1/4"
- Tubing Size : ID 7/16" OD 5/8"

Additional Information

| | |
|----------------|-------------------|
| Brand | Bitspower |
| SKU | BP-MB45R2CPF-CC6U |
| Weight | 0.2000 |
| Fitting Type | Compression |
| Fitting Size | 7/16" x 5/8" |
| Fitting Angle | 45 Degree |
| Fitting Finish | Matte Black |
| Vendor SKU/EAN | 4712914772862 |

