



# Thermaltake SMART DPS G 700W Bronze Power Supply

Special Price  
**\$85.99** was  
**\$99.99**

## Product Images



## Short Description

The Thermaltake SMART DPS G Bronze Series are digital power supply units (PSU) that incorporate various

high-tech components, leading technology and Eco-friendly commendations, featuring 80 PLUS Bronze certification with a semi-modular that always accommodate any mainstream build under any circumstance.

## Description

---

The Thermaltake SMART DPS G Bronze Series are digital power supply units (PSU) that incorporate various high-tech components, leading technology and Eco-friendly commendations, featuring 80 PLUS Bronze certification with a semi-modular that always accommodate any mainstream build under any circumstance.

The combination of Smart DPS G Bronze and three intelligent platforms – DPS G PC APP 2.0, DPS G Smart Power Management (SPM) Cloud 1.0, and DPS G Mobile APP 1.0 helps users not just monitor smart power supply units, but also save the energy, reduce CO2 emission, and eventually protect the Earth.

## Features

---

### What is Smart Power Management (SPM)?

Thermaltake would like to raise the awareness on global warming issue to all PC DIY/ PC users through Smart Power Management (SPM) platform. SPM is a cloud computing platform that tracks and analyzes PC electricity consumption, allows user to observe and learn their own energy consumption whereby alter their behavior to achieve the goal of reducing CO2 emission together to contribute on slowing global warming.



## SPM Service Architecture



## Smart Power Management (SPM)

Out of all the PSU monitoring software applications on the market, Thermaltake DPS G Smart Power Management (SPM) is the most powerful, flexible, universal and easy-to-use monitoring tool that provides digital solution together with PC software and mobile application.

On the basis of DPS G Smart Power Management Cloud 1.0, users can access the PSU/VGA/CPU data via PC or mobile devices. By uploading the data onto the smart power management cloud every 6 hours, users are capable of monitoring multiple PSUs via their mobile devices and achieving IT cost reduction while monitoring the PSU. Additionally, users are capable of accessing data as well as doing PSU management on different devices – PC or mobile devices – anytime anywhere.



## DPS G Smart Power Management Cloud 1.0: FEED vs. ME

Share your PSU data/status on “FEED” with friends and check your own messages from your friends. Also, you can find Thermaltake official news releases and product information on the “FEED” page.

Click on “ME”, users can monitor the status of PSU/VGA/CPU (data will be uploaded per minute), including efficiency, fan speed, voltage, current, etc. Zoom in to see more details of the graph, there is no limit on the

number of PSUs being monitored at any one time.



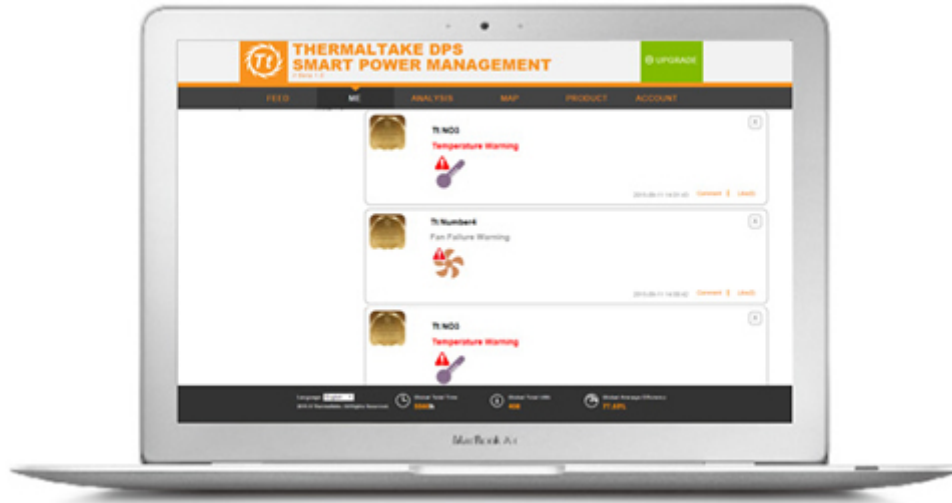
## DPS G Smart Power Management Cloud 1.0: Analysis

Click "Analysis", users can choose the specific PSU they want to monitor, or click "Select All" to see all the digital power supplies. Detailed information such as total time, total cost, and KWh can be monitored at once. Besides line chart, users can also see the data in pie chart and bar chart.



## DPS G Smart Power Management Cloud 1.0: Warning Alert

Our real-time warning alert will be pushed to DPS G Smart Power Management Cloud 1.0 immediately; once the fan fails as well as the PSU temperature is overheated (over 140°/60°).



## DPS G PC APP 2.0: CPU and VGA Monitoring

DPS G PC App 2.0 enables users to digitally monitor the key parameters of the CPU and VGA, including efficiency, wattage, voltage and temperature while using computer.



## DPS G PC APP 2.0: Warning Alert

Our DPS G PC APP 2.0 offers real-time warning alert when the power supply fan fails or the power supply appears overheated (over 140°/60°).



## DPS G Mobile APP 1.0: Single Comparison

Users are capable of monitoring single or multiple PSUs anytime anywhere while using DPS G Mobile APP 1.0.

Click “Single Comparison”, you can freely choose which PSU you want to monitor in detail such as efficiency, fan speed, voltage, current and so on, or use “Select All” to see all the data of digital power supplies. After you select the data, the DPS G Mobile APP 1.0 shows how data change during a period of time. DPS G Mobile APP 1.0 is available on OS and Android devices:

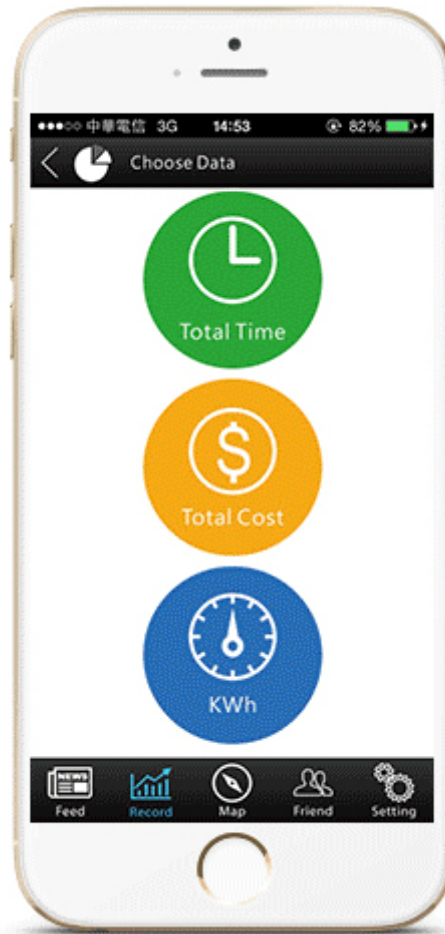


## DPS G Mobile APP 1.0: Total Analysis

Users are capable of monitoring single or multiple PSUs while using DPS G Mobile APP 1.0.

Click "Total Analysis", users can see the selected information of the PSU, including Total Time, Total Cost, and KWh. Percentages of each item will be showed clearly, either in line chart or pie chart.





## DPS G Mobile APP 1.0: Warning Alert

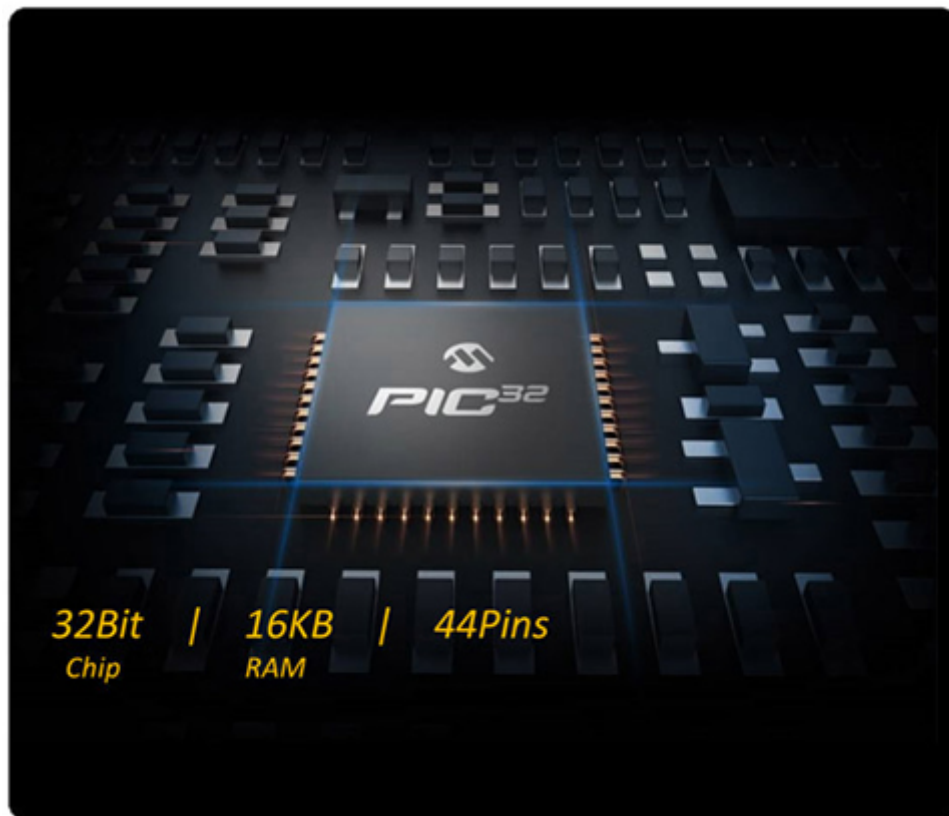
Our real-time warning alert will be pushed to your mobile devices immediately; once the fan fails as well as the PSU temperature is overheated (over 140°/60°).





## Core Component: MCU

Smart DPS G Series comes with a 32Bit Microcontroller Unit (MCU) from Microchip Technology. The 32Bit Microcontroller Unit is a small computer on a single integrated circuit containing a processor core, memory, and programmable input/output peripherals. MCU can digitally control devices and processes, such as automobile engine control systems and office machines.



## 80 PLUS Bronze-certified and Haswell-ready

Smart DPS G Power Supply with DPS G software delivers up to 86% efficiency under real-world load conditions, promising the lowest power losses. Additionally, Smart DPS G Bronze Series has been optimized to work with Intel's new, fourth-generation Haswell processors to achieve maximum energy savings.



## Flat Modular Cables

Smart DPS G Bronze Series is semi-modular power supply that offers cable selection for users while powering the system at an advantageous voltage. All new low-profile flat modular cables enhance the airflow as well as improve the thermal performance of the chassis. Moreover, flat cables are softer which make cable routing easier to install.



CABLE						
P/N	Main Power Connector (24Pin)	ATX 12V (4+4Pin)	Peripheral (4Pin)	SATA (5Pin)	PCI-E (6+2Pin)	FDD (4Pin)
SPG-0700D-B	1	1	3	8	4	1

## High Quality Japanese Main Capacitors

The Smart DPS G Bronze Series features Japanese main capacitors, which greatly improves the durability and offers the highest stability and reliability. No more capacitor explosion and leakage.



## High Current Single +12V Rail

Smart DPS G Bronze Series is equipped with a powerful single +12V rail, please see the output specification below:



AC INPUT	Input Voltage: 100V - 240V Input Current: 10A Frequency: 47Hz - 63Hz				
DC OUTPUT	+3.3V	+5V	+12V	-12V	+5Vsb
Max Output Current	22A	18A	54A	0.3A	2.5A
Max Output Power	130W		648W	3.6W	12.5W
Continuous Power	700W				

## Specifications

Thermaltake

Model

PS-SPG-0700DPCBUS-B

Series

Smart DPS G

## Details

Type

Intel ATX 12V 2.31 & SSI EPS 12V 2.92

Maximum Power

700W

Fans

120mm Double Ball Bearing

PFC

Active

Main Connector

24Pin

+12V Rails

Single

PCI-Express Connector

4 x 6+2-Pin

SATA Power Connector

8

SLI

SLI Ready

Haswell Support

Yes

CrossFire

CrossFire Ready

Modular

Modular

Efficiency

85% Efficiency

Energy-Efficient

80 PLUS BRONZE Certified

Input Voltage

100 - 240 V

Input Frequency Range

47 - 63 Hz

Input Current

10A

Output

+3.3V@22A, +5V@18A, +12V@54A, -12V@0.3A, +5VSB@2.5A

MTBF

>120,000 Hours

Approvals

CE/FCC/UL/TUV/CB/EAC/BSMI Certifications

Dimensions

3.38" x 5.51" x 5.90"

Weight

6

### Additional Information

Brand	Thermaltake
SKU	PS-SPG-0700DPCBUS-B-D
Weight	5.2000
Color	Black
PSU Type	ATX
PSU Style	Modular
PSU Wattage	700W
PSU Efficiency	80 PLUS Bronze
Vendor SKU/EAN	841163062456
Special Price	\$85.99

