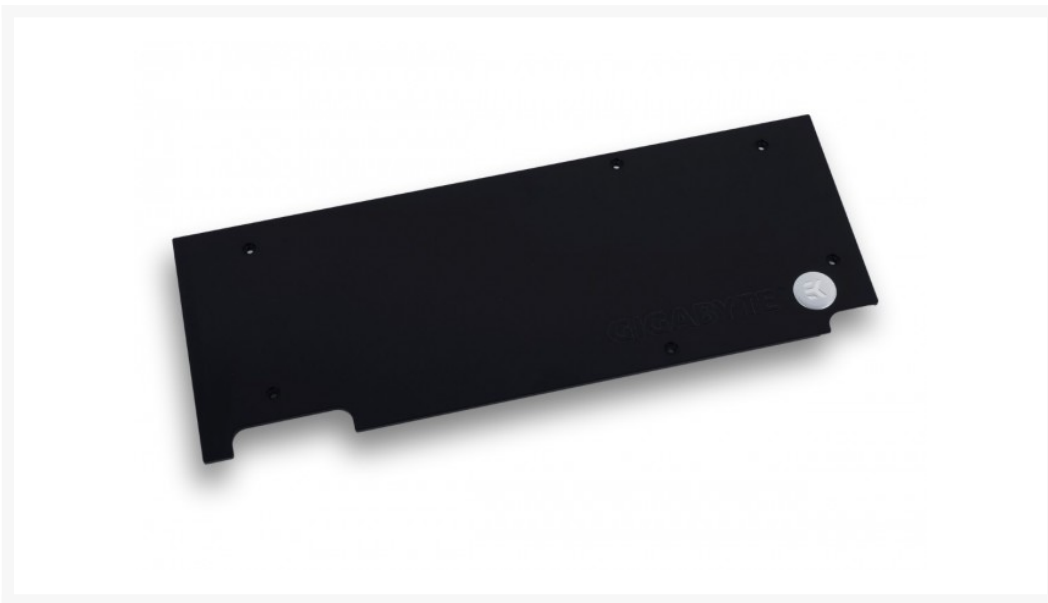




EK-FC1080 GTX G1 Backplate - Black for GIGABYTE Non-reference Series Water Blocks

Special Price
\$28.49 was
\$37.99

Product Images



Short Description

EK-FC1080 GTX G1 Backplate is a retention backplate made of black anodized aluminum for EK-FC1080 GTX G1 series water blocks. Backplate covers the whole length of graphics cards PCB, serves as an aesthetic add-on and also provides passive cooling for the backside of voltage regulation module (VRM).

Description

EK-FC1080 GTX G1 Backplate is a retention backplate made of black anodized aluminum for EK-FC1080 GTX G1 series water blocks.

Backplate covers the whole length of graphics cards PCB, serves as an aesthetic add-on and also provides passive cooling for the backside of voltage regulation module (VRM).

This backplate is guaranteed to be compatible only with GIGABYTE non-reference design NVIDIA GeForce GTX 1080 graphics cards.

Enclosed:

- EK-FC1080 GTX G1 Backplate - Nickel
- mounting mechanism
- thermal pads

Made in Slovenia - Europe!

PLEASE NOTE:



- The backplate does not serve as a standalone unit and is compatible with EK-FC1080 GTX G1 water blocks!

Additional Information

Brand	EK Waterblocks
SKU	EK-FC1080-G1-GTX-BK-BP-D
Weight	1.2500
Color	Black
Vga	GIGABYTE® GeForce GTX 1080 G1
Block GPU Type	Nvidia
Block Accessory Type	VGA Backplate
Material	Aluminum
Vendor SKU/EAN	3831109831397
Special Price	\$28.49

