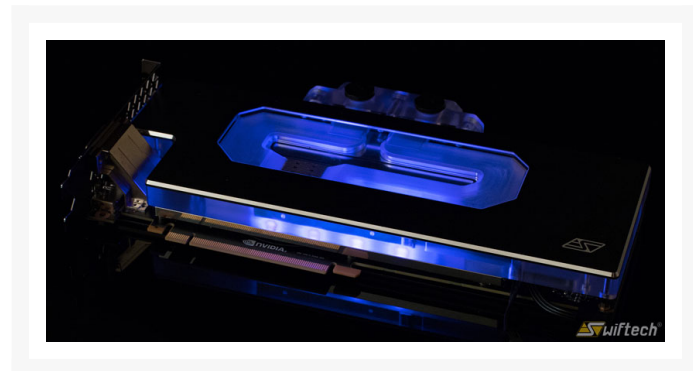
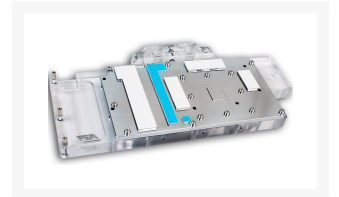
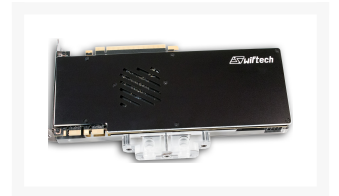


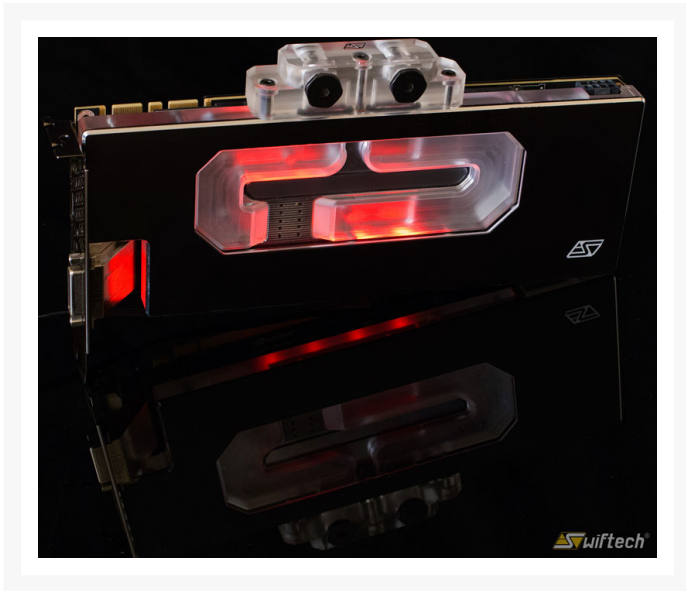


Swiftech KOMODO NV-LE GTX1080 VGA Waterblock

Special Price
\$49.03 was
\$162.95

Product Images





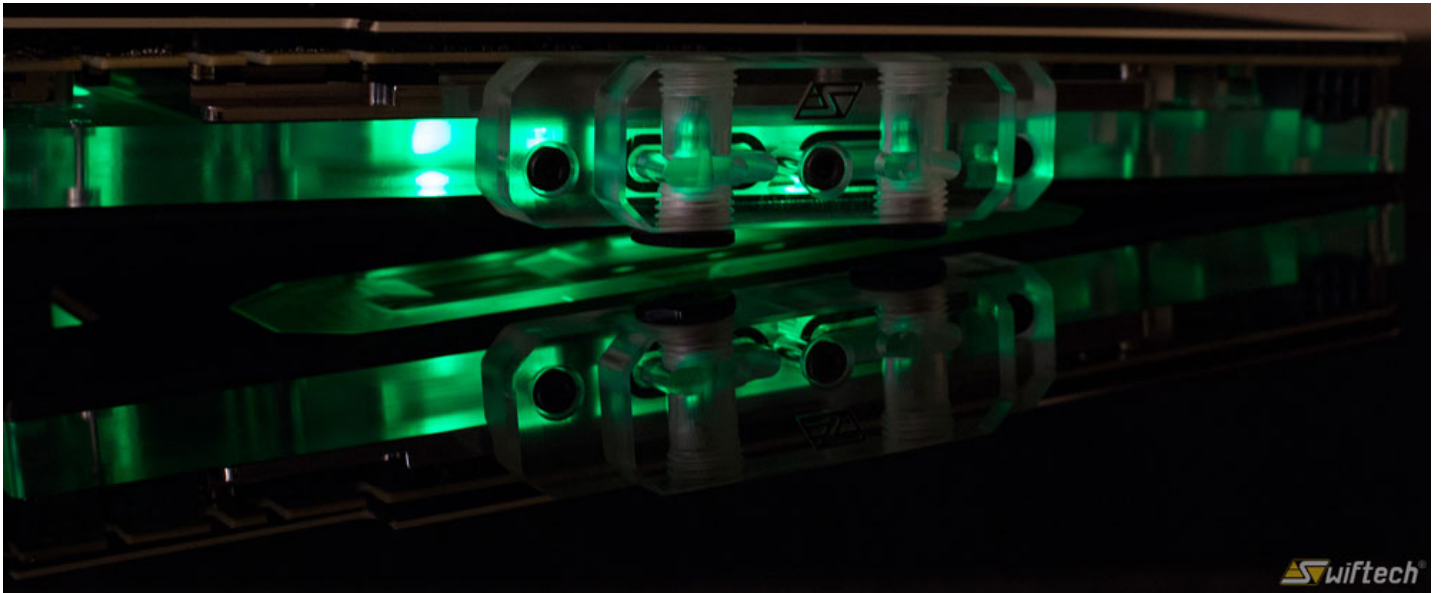
Short Description

The Komodo™ NV-LE GTX 1080 full cover waterblock is a high performance cooling solution with advanced thermal design and low flow restriction, compatible with Nvidia's GeForce GTX 1080 and GTX 1070 flagship graphics cards reference PCB designs. This model marks the beginning of our third generation of "Luxury Edition" VGA waterblocks focused on smooth and streamlined elegance, and is now introducing the use of a new RGB ALED lighting system compatible with all versions of Swiftech's X2 series CPU coolers.

Description

The Komodo™ NV-LE GTX 1080 full cover waterblock is a high performance cooling solution with advanced thermal design and low flow restriction, compatible with Nvidia's GeForce GTX 1080 and GTX 1070 flagship graphics cards reference PCB designs. This model marks the beginning of our third generation of "Luxury Edition" VGA waterblocks focused on smooth and streamlined elegance, and is now introducing the use of a new RGB ALED lighting system compatible with all versions of Swiftech's X2 series CPU coolers. This will allow users to unify the color scheme of their entire cooling system at the push of a button.

The coolant flow path includes all critical components such as GPU, memory, power mosfets as well as all other power components specified in NVidia's "Thermal Solutions Design Guide". Proper cooling of all the critical components contributes to overclocking stability, reliable operations, and longevity of the graphics card.



The block housing and bridge are made of high quality acrylic material, allowing the back lighting system to shine through the edges of the block, the coolant window, and the bridge; the base plate is made of chrome plated C110 copper with pre-installed thermal pads; the housing surface is dressed with a black anodized aluminum top plate featuring a central cutout to show the coolant flow path, and highlighted beveled edges; the housing top plate is mirrored by a similarly finished back-plate, protecting and beautifying the back side of the graphics card.

Features

Why is the Komodo NV-LE a superior cooling solution ?

The only true full cover water-block

The blocks cover the full length of the card and utilizes all the original circuit board mounting points; this results in superior thermal interface with all the components, but more importantly it prevents bending and/or damage to the card compared to many competing solutions that leave critical components exposed for cost saving purposes; the Komodo NV-LE series continue this exclusive Swiftech® initiative as a true professional solution.

Moderate flow restriction by design

The water channels are optimized for optimum flow rate in order to take into account multiple waterblocks in the same loop; additionally, the high efficiency of the thermal design authorizes better thermal performance at low flow rates.

True Chrome Plated copper base plate

Maintenance-free, corrosion-free, discoloration-free, and a brighter whiter color: the precision CNC machined copper base plate is plated with true chrome, as opposed to commonly used nickel plating (which is yellowish).

Precision CNC machined housing

The main housing is precision CNC machined out of acrylic material.

Pre-applied thermal pads

High conductivity thermal pads and reusable high performance gap-fillers are pre-applied to the memory, VR and other components; there is no need to waste time cutting thermal pads as is often the case with competing solutions; our high quality Tim-Mate™ 2 thermal grease is included with the water-block for application to the GPU area.

SLI support

Up to four Komodo NV-LE GTX 1080 waterblocks can be interconnected using either Lok-Seal™ adjustable connector fittings, or our new upcoming generation of SLI bridges (to be announced).

Specifications

What is included in the box
Water-block
ALED lighting system (pre-installed inside block)
Light controller (PWM splitter), and extension cable
Pre-installed thermal pads
VGA back-plate
Tim Mate 2 Thermal grease
(2) G1/4 plugs
Installation guide

Technical Specifications
Inlet & Outlet port thread standard:: 1/4" BSPP (G1/4)
Quality assurance: leak tested at 30 PSI
Thermal joints installation: <ul style="list-style-type: none">• GPU: thermal compound (included)• Memory & power fets: pre-installed 0.5mm thermal pads• Other components: high performance reusable 1mm gap filler
Housing material: acrylic
Base Plate material: Chrome plated C110 copper
Dimensions: (L) 10.5" - 268mm x (W) 4.8" - 122mm x (H) .74" - 19mm (measured from GPU pedestal to top of housing)

Mass: 44 oz - 1247 g

Additional Information

Brand	Swiftech
SKU	KOMODO-NV-LE-GTX1080-D
Weight	4.0000
Color	Clear
Vga	GeForce GTX 1080
Block GPU Type	Nvidia
Block Style	Copper-Acetal
Internet Reviews	<p>I have no problem saying right from the start the Swiftech Komodo NV-LE is a remarkable piece, and possibly the highest caliber liquid cooling component I have come into contact with. Straight out of the box, the NV-LE is special. The finish work and design is absolutely flawless. Looks may be subjective, but there is no disputing how well Swiftech pulled off their design or the quality of the materials used. While the NV-LE retains the classic Komodo shaping and earmarks, some flash has been added with the LED ring, a window to the liquid chamber and color changes. In no way does the NV-LE cross over into garish, it remains very tasteful, just more ornamental. The feel is fantastic, with excellent finish work, and the black anodized surfaces are absolutely flawless on both the block and included backplate.</p> <p>To Read More Click "HERE"</p>
Special Price	\$49.03

