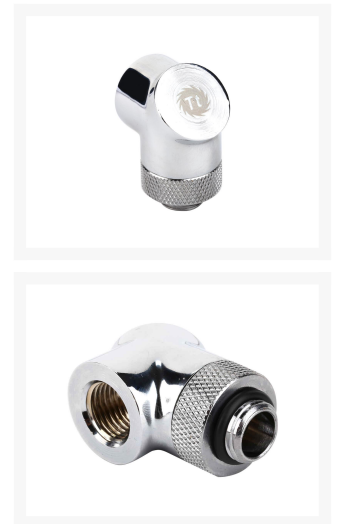




Thermaltake Pacific G1/4 90 Degree Adapter - Chrome - 2 Pack

\$15.95

Product Images



Short Description

Thermaltake introduces the Pacific Series Adapter fittings for the ultimate in custom PC water cooling configurations. Finished in chrome-plated brass, the adapter fitting is in 360-degree revolvable design, and consists of two sealed O-rings with side printed Tt logo, allowing users to redirect the fittings at a 90 degree angle for easier tube routing. Choose from: 45, 90, 45 & 45, 45 & 90 degree, and 4-way connector, Thermaltake fittings provide a complete solution for DIY enthusiasts and PC builders by giving users ideal mounting, fitting and flow.

Description

Thermaltake introduces the Pacific Series Adapter fittings for the ultimate in custom PC water cooling configurations. Finished in chrome-plated brass, the adapter fitting is in 360-degree revolvable design, and consists of two sealed O-rings with side printed Tt logo, allowing users to redirect the fittings at a 90 degree angle for easier tube routing. Choose from: 45, 90, 45 & 45, 45 & 90 degree, and 4-way connector, Thermaltake fittings provide a complete solution for DIY enthusiasts and PC builders by giving users ideal mounting, fitting and flow.

Features

“Tt LCS Certified” is the hallmark that ensures first-class performance from the best features and fitment. A certification exclusive to Thermaltake, it sets the benchmark for all true LCS chassis and is applied only to products that meet our stringent design standards for delivering what hardcore enthusiasts demand. The Tt LCS certification is a way for Thermaltake to designate to all power users the chassis which have been tested for best compatibility with extreme liquid cooling configurations.



High-flow and Leak-free Design

Made in Taiwan, the fittings allow proper connection to G1/4" ports, securing properly to any cooling components. The brass fittings are available in chrome and black finishes with two O-rings, prevent coolant from leaking. Compared to D5 pump, the maximum working pressure of O-rings is much higher, delivering great pressure resistance and performance. The 360-degree revolvable design delivers easier tube routing, working around obstacles in the system.



Remarkable Expansion

Thermaltake offers a full line of Pacific Series components for enthusiasts to build up aesthetically-superior water cooling systems by incorporating externally-modular upgrades for their chassis.





Specifications

0

Additional Information

Brand	Thermaltake
SKU	CL-W178-CU00SL-A
Weight	0.6000
Fitting Type	Adapter
Fitting Size	1/4"
Fitting Angle	90 Degree
Fitting Finish	Chrome

