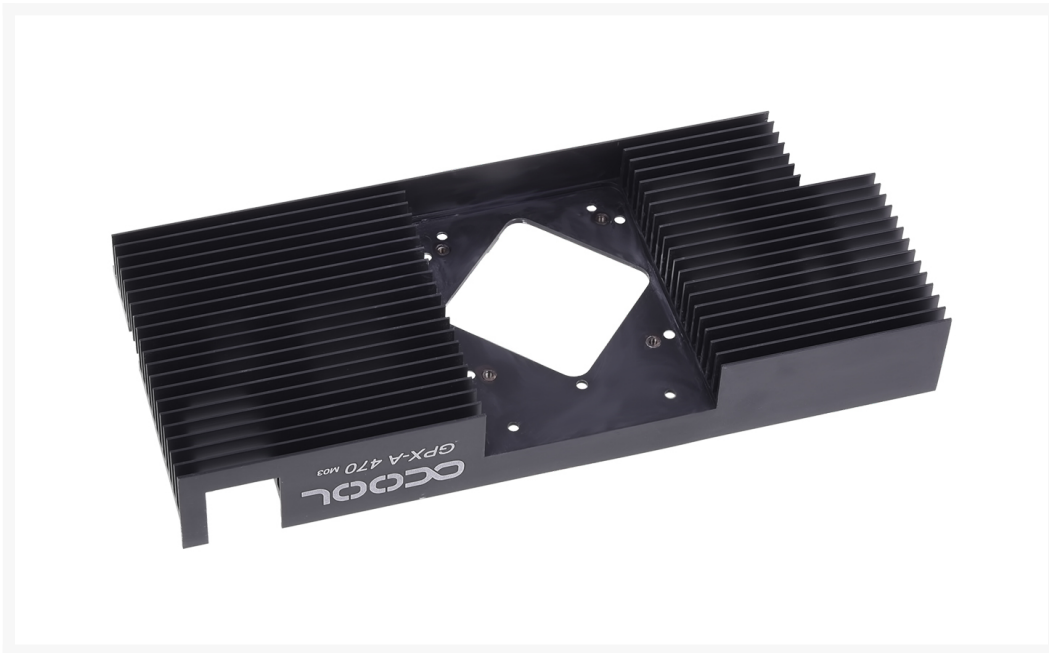


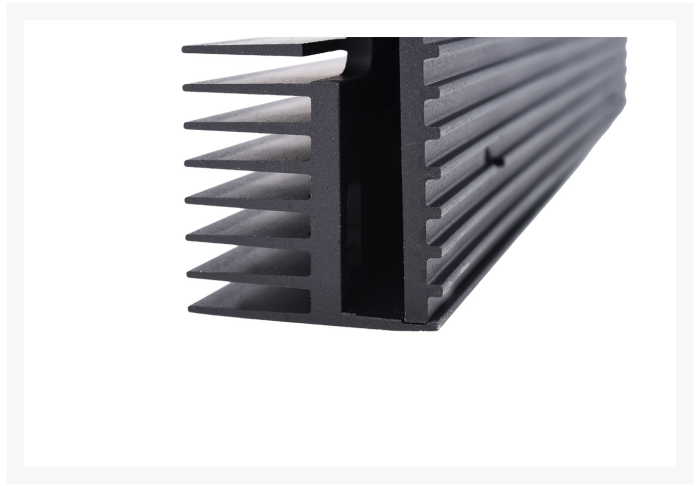


Alphacool Upgrade-kit for NexXxoS GPX - ATI R9 470 M03 - black (without GPX Solo)

Special Price
\$9.99 was
\$71.50

Product Images





Short Description

Alphacool is making great strides with the new NexXxoS GPX coolers! This new cooling concept offers optimal performance and quality at a reasonable price!

Upgrade Kit

If you buy a new graphics card and want to integrate it into your cooling loop, you won't need to buy a new graphics card cooler, which can get pretty expensive. Instead, you can save money with this Alphacool GPX Upgrade Kit. Simply unscrew the GPX cooler from the old cooling fins and mount it on the new cooling fins - that is, on the upgrade kit. For the best results in cooling performance, first remove the old thermal paste from the GPX cooler and apply a new thin layer between the GPX cooler and the new upgrade k

Description

Alphacool is making great strides with the new NexXxoS GPX coolers! This new cooling concept offers optimal performance and quality at a reasonable price!

Upgrade Kit

If you buy a new graphics card and want to integrate it into your cooling loop, you won't need to buy a new graphics card cooler, which can get pretty expensive. Instead, you can save money with this Alphacool GPX Upgrade Kit. Simply unscrew the GPX cooler from the old cooling fins and mount it on the new cooling fins - that is, on the upgrade kit. For the best results in cooling performance, first remove the old thermal paste from the GPX cooler and apply a new thin layer between the GPX cooler and the new upgrade k

Features

Function

The GPU is actively cooled through the ingenious new injection technology. All the other chips are sufficiently cooled through the passive cooler in which the GPU water cooler is enclosed.

Cross Slot Structure

The cross slot technology in the base plate, patented in 2004 and used in the Alphacool NexXoS XP, has been developed further. The fins and channel structure have been refined. The remaining panes are 0.5 x 0.5mm in size and 2.5mm tall. This enables a very large and fast rate of heat transfer from the copper to the coolant.

SLI Operation

Through the outside-facing inlet and outlet, this cooler can be used in SLI configurations with little difficulty. This way, up to four graphics cards can be connected with the Alphacool GPX SLI Connector.

Backplate

Every cooler now includes a backplate which uses little passive cooling fins to cool the graphics card again, as well as giving the graphics card a finished appearance and protecting it at the same time.

Cooling fins

Passive cooling happens through perfectly balanced, barely 18mm deep cooling fins, which completely cover the remaining parts of the graphics card. Light air circulation in the case means this cooler is in no way inferior to conventional coolers.

Graphics card not included

Specifications

Scope of Delivery

- 1x Graphics card cooler
- 1x Backplate
- Thermal pads
- Thermal paste
- Assembly materials

Additional Information

Brand	Alphacool
SKU	AC-12864-D
Weight	2.2500
Color	Black
Vga	Sapphire Nitro+ Radeon RX 470
Block GPU Type	AMD
Block Accessory Type	Upgrade Kit
Material	Aluminum
Vendor SKU/EAN	4250197128643
Special Price	\$9.99

