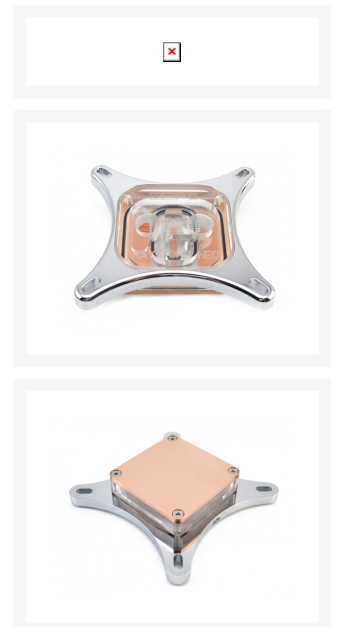




# RayStorm Neo WaterBlock (Intel) Chrome

Special Price  
**\$59.86** was  
**\$79.95**

## Product Images





## Short Description

The RayStorm Neo combines the high performance of our RayStorm Pro block, with a premium new look. Each waterblock is carefully machined from pure copper and acrylic, while the hold down bracket is machined from solid aluminium. As with all XSPC products, no aluminium is used in the coolant flow path.

## Description

---

The RayStorm Neo combines the high performance of our RayStorm Pro block, with a premium new look.

Each waterblock is carefully machined from pure copper and acrylic, while the hold down bracket is machined from solid aluminium. As with all XSPC products, no aluminium is used in the coolant flow path.

The RayStorm Neo offers outstanding performance, low flow restriction, RGB lighting, and thanks to our new mounting system it's easier than ever to install.

Supplied with a multi function RGB controller and two RGB LEDs.

## Specifications

---

- High performance copper base
- High quality acrylic top
- Solid aluminium bracket
- Low flow restriction
- RGB Lighting
- 2 x 2x5x5mm LED holes
- G1/4" threads
- Compatible with most compression fittings

Supports Intel Sockets: LGA2066, LGA2011, LGA2011-3, LGA1366, LGA1150, LGA1151, LGA1155, LGA1156

Supplied with mounting hardware, 1150/1151/1155/1156, and 1366 backplates, RGB controller, two RGB LED, and K3 thermal paste.

## Additional Information

Brand	XSPC
SKU	XSPC-RAYSTORM-NEO-INTEL-CH
Weight	1.5000
Color	Chrome
CPU Series	Intel LGA2066, LGA2011, LGA2011-3, LGA1366, LGA1150, LGA1151, LGA1155, LGA1156
Block CPU Type	Intel
Block Style	Copper
Vendor SKU/EAN	5060175588999
Special Price	\$59.86

