

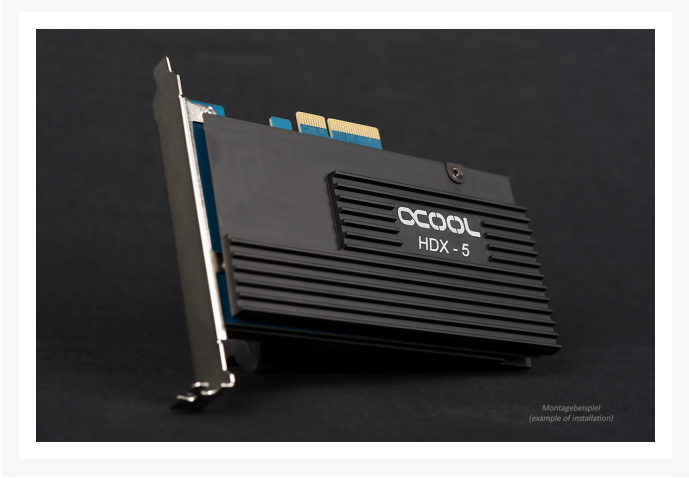
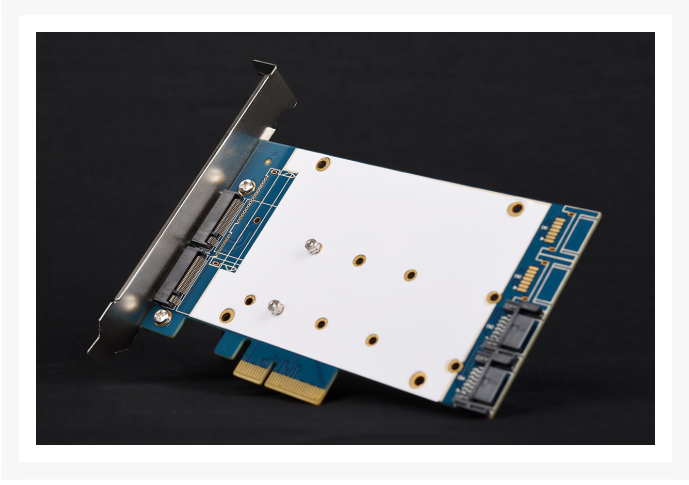
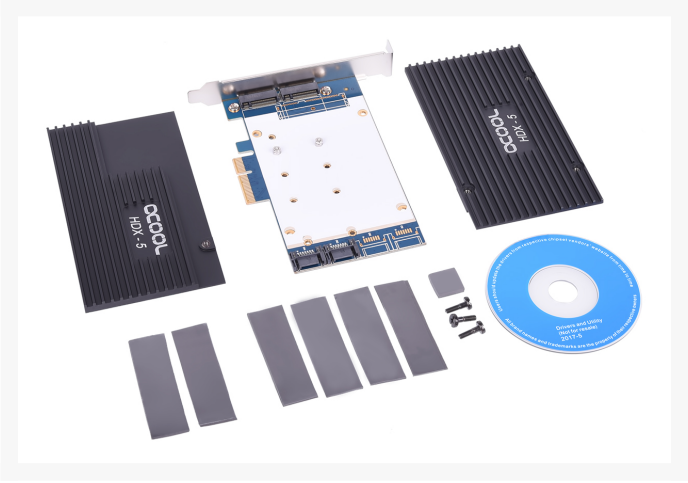
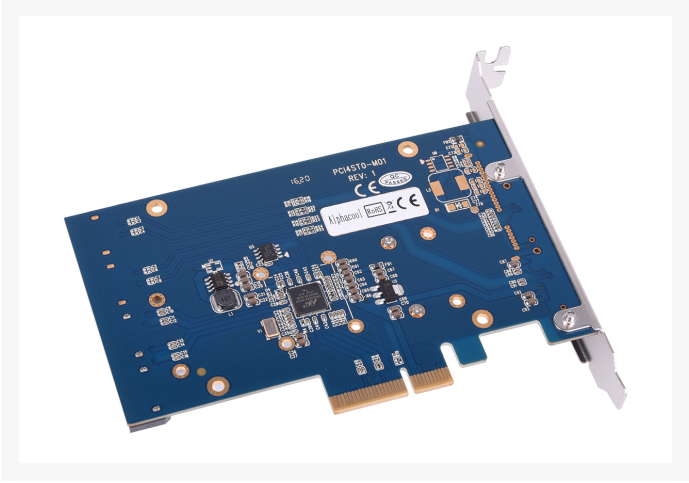
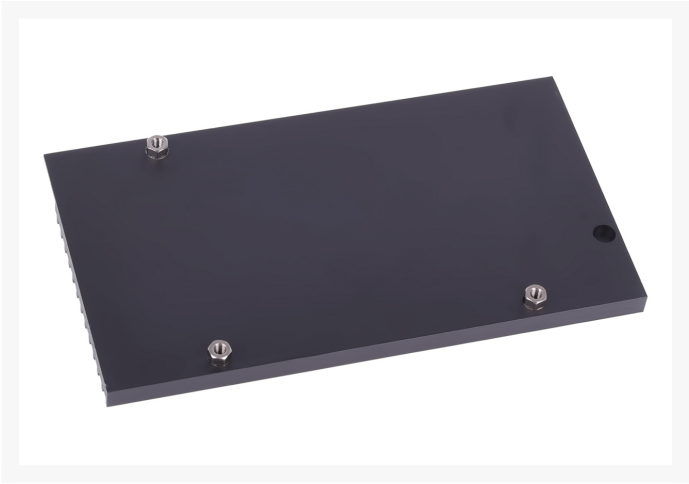


Alphacool Eisblock HDX-5 NGFF+SATAIII PCIe Card with passive cooling block - black

\$109.99

Product Images





Short Description

The Alphacool HDX-5 is a combination of a RAID controller card and a massive cooler. It has two slots for SATA M.2 SSDs and two additional SATA slots, allowing you to set up a RAID 0 or 1 group. The 4x PCIe card also provides a bandwidth of up to 3900 MB/s.

Description

The Alphacool HDX-5 is a combination of a RAID controller card and a massive cooler. It has two slots for SATA M.2 SSDs and two additional SATA slots, allowing you to set up a RAID 0 or 1 group. The 4x PCIe card also provides a bandwidth of up to 3900 MB/s.

Features

- No more throttling of the SSD due to overheating
- RAID 0 or 1 possible
- 4x PCIe card with a bandwidth of around 3900 MB/s
- Cooler optimally protects your SSD

With the Alphacool HDX-5, you get a RAID controller card together with a massive heatsink for your M.2 SATA SSD. The card also features two SATA connections on its end, for connecting your normal SATA drives. This lets you choose whether you just want to connect two M.2 SATA SSDs together for RAID 0 or 1, or if you want to connect one M.2 SSD to each hard drive in the SATA slots to make a RAID group, or just use two hard drives in the normal SATA slots. Alternatively, you could use just the two M.2 SATA slots in a RAID group and use the normal SATA slots for additional hard drives for your system.

So that the connection to the rest of the system doesn't become a bottleneck, Alphacool uses a 4x PCIe plug-in card that provides a bandwidth of around 3900 MB/s. That's almost 600% more than a conventional SATA connection with around 640 MB/s. Even many motherboards only have a 2x PCIe for the M.2 slot, essentially half of the possible bandwidth of the Alphacool 4x PCIe card.

The HDX-5's massive cooler prevents the M.2 SSDs from decreasing in speed, which generally happens very quickly during large data transfers due to overheating. When this happens, the SSD's performance drops to around 10% of its actual capacity. With the HDX-5's massive cooler, which covers the length of your entire SSD, this possibility is almost entirely eliminated. Unlike M.2 connections on a motherboard, which are hard to cool due to their positioning near or underneath the graphics card, the HDX-5 has no such problem.

Specifications

Technical Details

- Dimension (LxWxH): 135 x 80 x 24mm

- Material: Aluminum
- PCIe form factor: 4x PCIe
- Compatibility: M.2 2280 PCIe SSDs
- Max. Bandwidth PCIe Card: 3938 MB/s

Scope of Delivery

- Alphacool Eisblock HDX-5 NGFF+SATAIII PCIe Card with passive cooling block - black
- PCIe card (M.2 adapter)
- Mounting material
- Slot cover
- CD

CAUTION


There is a protective film covering the PCI-E plug contact. This must be removed before initial operation.

Additional Information

Brand	Alphacool
SKU	AC-11437
Weight	0.5000
Color	Black
Msc Watercool	HDD/SSD Waterblock
Material	Aluminum
Vendor SKU/EAN	4250197114370

Internet Reviews

65% THERMALBENCH RATING



Thermalbench Review
"Packaging is excellent, and the block does support most Intel and AMD sockets from the past decade even. Aesthetics are a personal preference but the build quality can't be argued against."
[Click here to read more!](#)

