

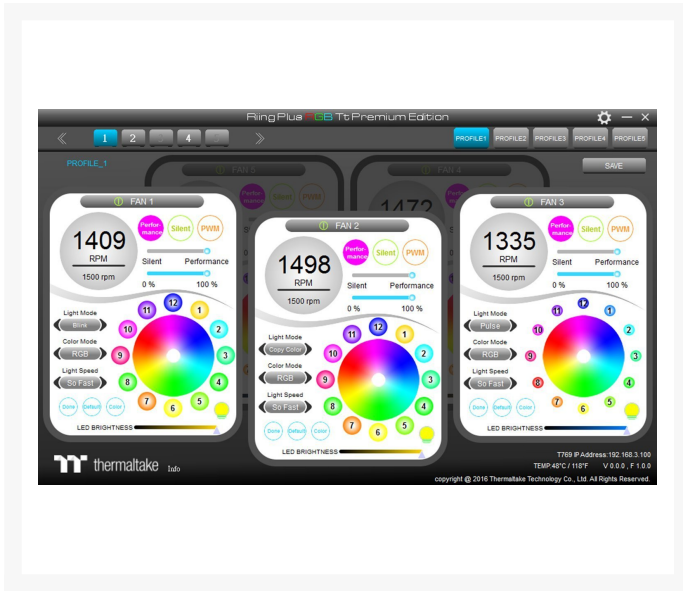


Thermaltake Riing Plus 12 LED RGB Radiator Fan TT Premium Edition (5 Fan Pack)

\$139.99

Product Images





Short Description

Thermaltake combines the patented gorgeous LED light with cutting-edge technology to deliver a brand new experience of using PC cooling, Thermaltake Riing Plus 12 LED RGB Radiator Fan TT Premium Edition. A 120mm high-static pressure fan with a patented 16.8 million colors LED ring and 12 controllable single LEDs, the Riing Plus 12 RGB features compression blades, hydraulic bearing and a digital fan controller, and can be controlled by the patented Riing Plus RGB Software. Cool your system with high performance Thermaltake Riing Plus 12 RGB!

Description

Thermaltake combines the patented gorgeous LED light with cutting-edge technology to deliver a brand new experience of using PC cooling, Thermaltake Riing Plus 12 LED RGB Radiator Fan TT Premium Edition. A 120mm high-static pressure fan with a patented 16.8 million colors LED ring and 12 controllable single LEDs, the Riing Plus 12 RGB features compression blades, hydraulic bearing and a digital fan controller, and can be controlled by the patented Riing Plus RGB Software. Cool your system with high performance Thermaltake Riing Plus 12 RGB!

Features

Patented LED Design

Featuring 12 controllable single LEDs, great light coverage, and uniform color and brightness, the built-in LED ring can paint your build with 16.8 million colors.

Patented Riing Plus RGB Software & App

Monitor the fan performance, adjust the fan speeds, and customize the lighting effects for Thermaltake Plus RGB liquid cooling products with the patented Riing Plus RGB Software and an exclusively designed mobile app. Choose a function from below and scroll down to read the details.

Profiles

Conveniently control all devices and customize the lights at the same time by setting up to five profiles for each controller. Each controller your system connected is displayed at the top left of the interface for you to quickly access. Within each profile, you can check which device is set to what operating mode and lighting effect. You can even "SAVE" and apply the settings to other controllers your system is running.

Digital Fan Controller

The controller is designed with a DIP switch on the back. Hence, you can set a number for each controller easily. You can add up to 5 fans to one fan controller and up to 16 controllers to the software. The controller and the coding guide are included in all packs.

*It is recommended to connect up to 3 controllers on one peripheral cable(Molex) only.

Nine Fan Blade Design

The Nine fan blades are engineered to generate higher airflow without compromising on ultra-silent operation. With this unique blade design, the Riing Plus 14 RGB acts as a guarantee of performance.

Hydraulic Bearing with Low-Noise Design

The hydraulic bearing self-lubricates with a high-quality, friction-reducing substance, which lowers operation noise while improving thermal efficiency. The seal cap prevents lubricant leakage and extends the lifespan of the unit.

Anti-Vibration Mounting System

In-mold injection anti-vibration rubber pads provide a hassle-free usage with 80% protection coverage for all corners.

Specifications

| | |
|----------------------|----------------------------|
| Fan Dimension | 120 x 120 x 25 mm |
| Interface | USB 2.0 connectors (9 Pin) |
| System compatibility | Windows 7 / 8 / 8.1 / 10 |
| Fan Started Voltage | 9.0 V |
| Fan Rated Voltage | 12 V & 5V |
| Rated Current | Fan 0.15 A (one fan) |

| | |
|-------------------|--------------------------------|
| Power Input | 12V – 9 W . 5V – 14.5W (Fan*5) |
| Fan Speed | 500 ~ 1500 R.P.M |
| Max. Air Pressure | 1.54mm-H2O |
| Max. Air Flow | 48.34 CFM |
| Noise | 24.7 dB-A |
| Bearing Type | Hydraulic Bearing |
| Life Expectation | 40,000 hrs,25°C |

Additional Information

| | |
|----------------|------------------|
| Brand | Thermaltake |
| SKU | CL-F054-PL12SW-A |
| Weight | 1.5000 |
| Color | Black |
| Fan Dimensions | 120mm |
| Fan Width | 25mm |
| Fan Connection | 4-Pin PWM |
| Fan Voltage | 12 VDC |
| Fan RPM | 1500 |
| Fan CFM | 48 |
| Fan Noise (dB) | 25 |
| LED Color | RGB |

