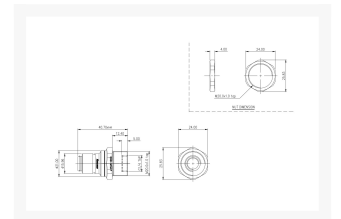




Koolance QD3H Male Quick Disconnect No-Spill Coupling, Panel Female Threaded G 1/4 BSPP

\$16.99

Product Images



Short Description

Koolance patented quick disconnect no-spill coupling with automatic shutoff. G 1/4 BSPP (parallel) thread female with panel-mount opposite a male "QD3H" quick-disconnect. It will only fit a Koolance QD3H female quick disconnect.

After pulling the ring on the female QDC side, the quick-disconnect fittings will separate. Liquid on both sides will be automatically obstructed with approximately 0.2ml freed. Coolant volume lost upon disconnection will rise with internal pressure higher than 10kgf/cm² (142psi).

Description

Koolance patented quick disconnect no-spill coupling with automatic shutoff. G 1/4 BSPP (parallel) thread female with panel-mount opposite a male "QD3H" quick-disconnect. It will only fit a Koolance QD3H female quick disconnect.

After pulling the ring on the female QDC side, the quick-disconnect fittings will separate. Liquid on both sides will be automatically obstructed with approximately 0.2ml freed. Coolant volume lost upon disconnection will rise with internal pressure higher than 10kgf/cm² (142psi).

Features

NOTE: Liquid Coolants Koolance's product warranty does not cover the use of 3rd-party coolants, coolant additives, or corrosion. Koolance LIQ-702 or LIQ-705 coolants are strongly recommended to help avoid issues with mixed metals or biological growth. Additionally, do not use aluminum with bare (unplated) copper or bare (unplated) brass in the same system. Do not use silver with nickel in the same system.

Specifications

Weight	0.11 lb (0.05 kg)
Materials	Brass, Nickel Plating, Stainless Steel, EPDM
Max Pressure @ 25°C	12kgf/cm ² (170.7psi)
Max Temperature	100°C (212°F)

Additional Information

Brand	Koolance
SKU	QD3H-MFG4-P
Weight	0.2000
Special Order	No
Fitting Type	Quick Disconnect Coupling
Fitting Size	1/4"
Fitting Angle	Straight
Fitting Finish	Chrome

