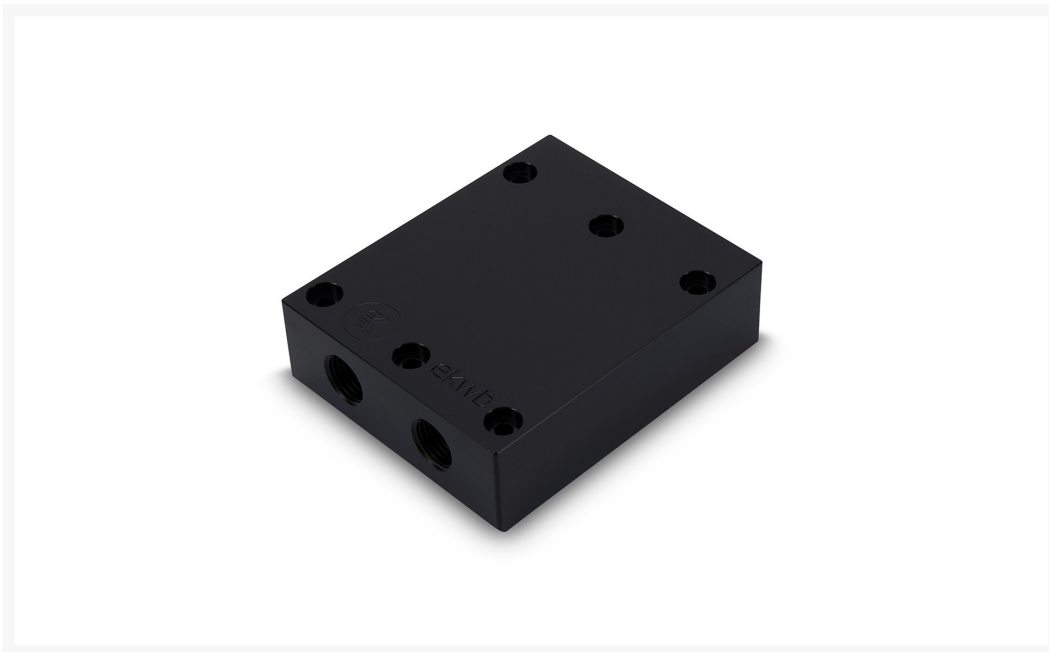




EK-FC Terminal X2 3-slot - Acetal

Special Price
\$10.95 was
~~\$33.99~~

Product Images



Short Description

EK-FC Terminal X2 3-slot - Acetal is a high-quality parallel interconnection for connecting two (2) EK Full-Cover water blocks in a single, sturdy unit. Connecting multiple full cover water blocks with such a terminal is an easy and straightforward process.

The Terminal is made of high-quality black POM Acetal. There is no need to purchase additional links or fittings since the EK-FC Terminal is mounted directly to the water block. Serial and parallel water flow is graphically explained in the installation manual.

Description

EK-FC Terminal X2 3-slot - Acetal is a high-quality parallel interconnection for connecting two (2) EK Full-Cover water blocks in a single, sturdy unit. Connecting multiple full cover water blocks with such a terminal is an easy and straightforward process.

The Terminal is made of high-quality black POM Acetal. There is no need to purchase additional links or fittings since the EK-FC Terminal is mounted directly to the water block. Serial and parallel water flow is graphically explained in the installation manual.

Specifications

Included:

- 1x EK-FC Terminal X2 3-slot - Acetal
- 2x Plug G1/4
- 1x mounting mechanism (spare Terminal O-ring and spare screw. All other parts are to be reused from the FC Blocks)

For use with motherboards with PCIe x16 slots 60.9 mm (2.4") apart!

PLEASE NOTE:

- Do not use excessive force while fastening the terminal to the water block itself!

Additional Information

Brand	EK Waterblocks
SKU	EK-FC-TERMINAL-X2-3SLOT-AC-D
Weight	0.5000
Color	Black
Vga	Universal
Block GPU Type	Nvidia/AMD
Block Accessory Type	SLI Terminal
Material	Acetal
Vendor SKU/EAN	3830046992826
Special Price	\$10.95

