

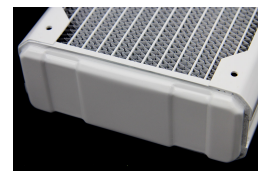
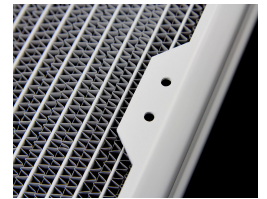
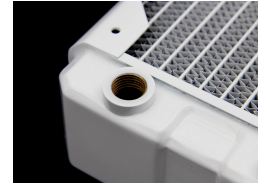


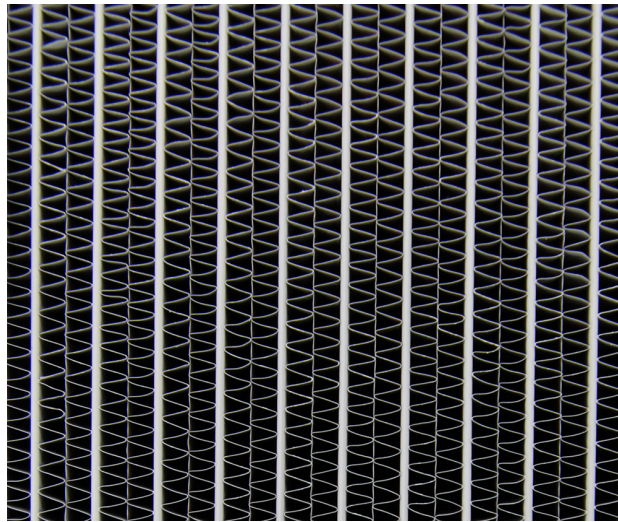
HARDWARE LABS

Black Ice Nemesis 560GTX® Dual-Core Xtreme Profile Radiator - White

\$193.95

Product Images





Short Description

The Black Ice® Nemesis® 560GTX® is the quad 140mm fan implementation of the Nemesis® series of radiators. Featuring an enhanced flow GTX® core with Supercruise optimizations, we give the hardcore PC case modder all that is needed to execute a multi-CPU/multi-GPU setup while maintaining whisper quiet operations with better flow and significantly enhanced scalability.

Description

The Black Ice® Nemesis® 560GTX® is the quad 140mm fan implementation of the Nemesis® series of radiators. Featuring an enhanced flow GTX® core with Supercruise optimizations, we give the hardcore PC case modder all that is needed to execute a multi-CPU/multi-GPU setup while maintaining whisper quiet operations with better flow and significantly enhanced scalability.

Features

- 140 mm x 4 fan Xtreme form factor two-pass radiator
- 592mm x 153mm x 54mm (L x W x H)
- 16 FPI 25 Micron Copper Fins
- Now optimized for sub-800 rpm ultra-stealth fans
- Supercruise optimizations for scalable performance with higher speed fans
- 15% more tubing area in the same Black Ice® GTX™ 560 form factor
- Increased internal coolant flow rates
- Standard G 1/4" inlet/outlet fittings
- Standard M4 mounting threads
- Fully ROHS Compliant
- 100% Made from conflict-free materials
- Industry standard Black Ice® quality
- Lifetime warranty against manufacturing defects*

* Limited warranty information: www.hardwarelabs.com/nemesis/warranty

** radiator shown with optional push fittings

Specifications

Recommended Capacity Stealth SuperCruise 8-Core CPU

| | | | | |
|--------|-------|---|---|---|
| 120GTX | 450W | ■ | ■ | ■ |
| 240GTX | 1000W | ■ | ■ | ■ |
| 360GTX | 1800W | ■ | ■ | ■ |
| 480GTX | 2200W | ■ | ■ | ■ |
| 140GTX | 550W | ■ | ■ | ■ |
| 280GTX | 1200W | ■ | ■ | ■ |
| 420GTX | 2000W | ■ | ■ | ■ |
| 560GTX | 2500W | ■ | ■ | ■ |

GPU SLI/Crossfire FANS

| | |
|--------|-----------|
| 1 | 1 X 120mm |
| TRIPLE | 2 X 120mm |
| QUAD | 3 X 120mm |
| QUAD | 4 X 120mm |
| 1 | 1 X 140mm |
| TRIPLE | 2 X 140mm |
| QUAD | 3 X 140mm |
| QUAD | 4 X 140mm |

SLI and Crossfire names are trademarks™ or registered® trademarks of their respective holders.

Additional Information

| | |
|--------------------|-----------------|
| Brand | Hardware Labs |
| SKU | N560GTX-F2PW |
| Weight | 7.0000 |
| Color | White |
| Radiator Size | 560 (4 x 140mm) |
| Radiator Thickness | 54mm |

February 14th, 2015 HW Labs Black Ice Nemesis 360GTX Radiator Review



"The Hardware Labs Black Ice GTX Gen Two Xtreme 360 is a beautiful radiator. The gloss black finish was completely free of any desirable defects. All the solder joints looked flawless as well. There is no doubt that when looking at the GTX 360 that it is finely crafted. There is certainly nothing to complain about when it comes to the high speed fan testing though. Here we the Black Ice GTX 360 outperformed every one of our test units. If you need strong performance and do not mind pushing some higher RPM fans or are planning on using a push/pull fan arrangement, it is one of the best in the class." Read the Full Review [HERE](#).

December 7th, 2014 HW Labs Black Ice Nemesis 360GTX Radiator Review



"The 360GTX uses a two pass configuration, with brass tubes. Copper fins are 25 microns in a 16 fpi pattern. The resulting performance was very much what one would expect from such a setup given top quality execution. Low rpm performance was good, though not the best we have tested. However, as fans speeds were upped, the Nemesis 360GTX scaled nicely. Performance took a huge jump once the fans hit a relatively low 1100 rpm and kept getting better from there. With fans speeds over ~1200 rpm, the Nemesis 360GTX was the top performing 360mm rad we have tested to date." Read the Full Review [HERE](#).

Internet Reviews

October 23, 2014 The Quad Rad Roundup



"Performance should never be the sole metric to base a radiator choice on. In fact, never buy a radiator separately- get the radiator and appropriately chosen fans in terms of airflow, static pressure and noise levels you are comfortable with. "The HWL (Black Ice NEMESIS) rads scale great with airflow while the XSPC RX V3 does not- goes to show that liquid and air flow restrictions don't tell everything and the entire package can affect things. The Nemesis series was optimized for scaling and it has showed to be the case in here." -Varun S. Gangoli. Read the whole review [HERE](#).



HardwareLabs have produced another great performing radiator to add to the

award winning Black Ice range. The Nemesis 360GTX's thermal performance was great at all flow rates and fan speeds tested but it really shone against the competition in the low fan speed tests. Presumably with only one set of fans it would do well across the whole range. The Nemesis GTX is a high quality radiator with solid performance that is tuned for low speed fans.

[Click here to read more!](#)



Proclockers Review:

If you need strong performance and do not mind pushing some medium RPM fans or are planning on using a push/pull low speed fan arrangement, it is one of the best in the class.

[Click here to read more](#)

