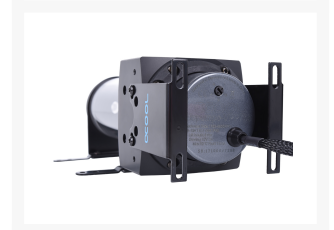
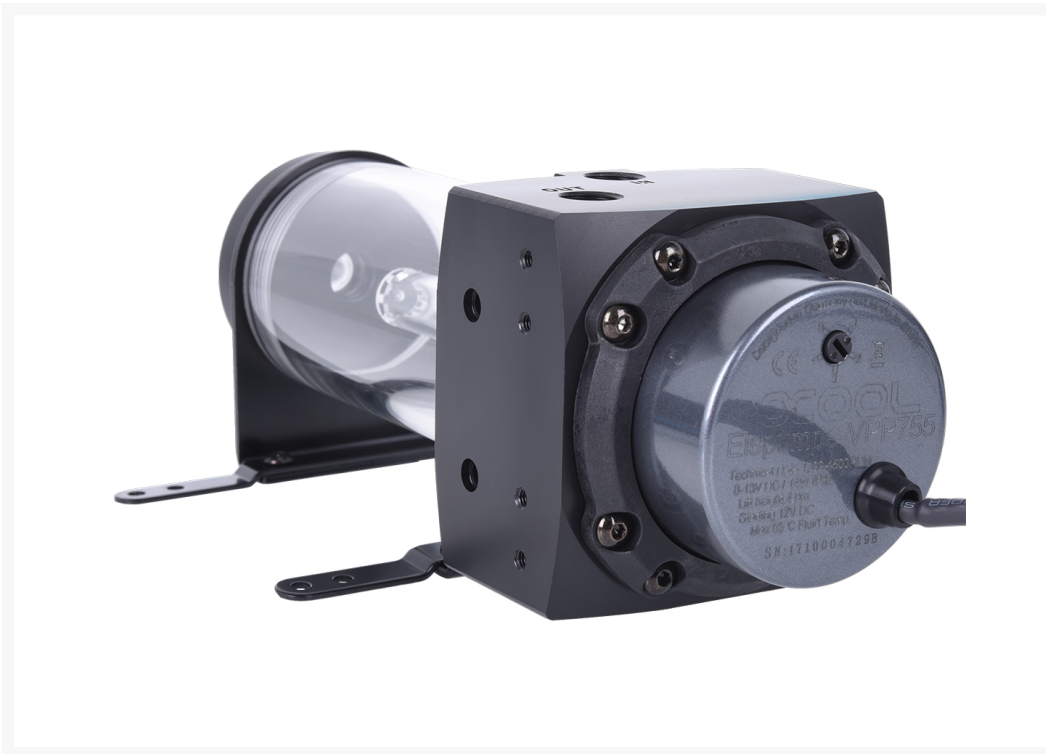




# Alphacool Eisbecher D5 150mm Acetal reservoir incl. 1x Alphacool Eispumpe VPP755

\$120.75

## Product Images





## Short Description

---

This Eisbecher is the big brother of the DDC version. The pump can be attached using a mounting ring and eight screws to hold it. The plexiglass version can be illuminated with four LEDs, which are placed into the pump socket. The lighting module illuminates from above. Small riser pipes and Bubble Down also do their work faultlessly here.

## Description

---

This Eisbecher is the big brother of the DDC version. The pump can be attached using a mounting ring and eight screws to hold it. The plexiglass version can be illuminated with four LEDs, which are placed into the pump socket. The lighting module illuminates from above. Small riser pipes and Bubble Down also do their work faultlessly here. The Eisbecher can be mounted either with the mounting bracket or with the included stands. If there is room in the 3.5" hard drive cage inside the case, the pump socket also has threads for this (requires pump decoupling with M4 inner and outer threads - Art. no. 52007).

## Specifications

---

### Scope of Delivery

- 8x M4x12mm screws
- 8x M4x8mm screws
- 4x M4 nuts
- 1x mounting ring
- 1x O-ring ID ca. 54mm
- 2x stands
- 1x 2.5mm hex key

Dimensions for 150mm version

- Dimensions incl. bracket without stands (LxWxH): 176 x 136 x 80mm
- Dimensions without bracket incl. stands (LxWxH): 223.5 x 87.5 x 80mm
- Plexiglass tube diameter: 60mm

## The VPP755 Eispump

The Alphacool VPP755 Eispump improves on the classic D5 VPP655 pump in every way. There is no area where it is weaker or louder than its predecessor, and it instead offers new ways to control the pump to your liking.

## Technical Specifications

- Dimensions (DxH): 60 x 53.5mm
- Cable length: 50cm
- Standard voltage: 12V DC
- Power consumption: 14W
- Permitted voltage: 8-13V DC
- Pressure at 12V: 4m water head
- Maximum flow rate: 350l/h
- Pump medium: water, water/glycol mixture
- Maximum system temperature: 65°C
- Power connection: 4-pin molex
- Tach signal: 3-pin
- PWM signal: 4-pin
- Special feature: adjustable in five levels
  - Level 1: 1800 RPM
  - Level 2: 2500 RPM
  - Level 3: 3200 RPM
  - Level 4: 3900 RPM
  - Level 5: 4500 RPM

## Scope of Delivery

- Alphacool Eisbecher D5 150mm Acetal incl. 1x Alphacool Eispump VPP755

## Notice

In order to use the inlet from above, a G1/4" extension piece is required (art. no. 1011183-1011186), as the thread is embedded a few mm into the cap and many screw threads will not be able to reach it.

## CAUTION

Removing the impeller from the ceramic shaft will cause the upper ceramic clamping ring to over-expand, which will destroy it! Removal will void the pump's warranty!

If the pump is put together again and put back into operation, the clamping ring will loosen, which is not accepted as grounds for a return or exchange...

## Additional Information

---

Brand	Alphacool
SKU	AC-13307
Weight	3.5000
Color	Clear
Reservoir Type	Tube Res
Tube Res Length	150mm
Vendor SKU/EAN	4250197133074

