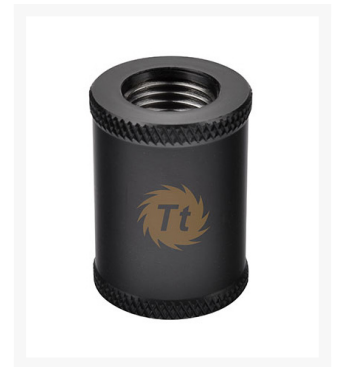




Thermaltake Pacific G1/4 Female to Female 30mm Extender – Black

\$6.99

Product Images



Short Description

The Thermaltake Pacific Series Extender fittings provide a complete water cooling solution for enthusiast and custom PC builders. Finished in black-plated copper, the G1/4 female to female extender fitting is designed with a side printed Tt logo. Choose from: 10mm, 20mm or 30mm extensions lengths to provide easier fitting installation and loop management. Thermaltake fittings provide a complete solution for DIY enthusiasts and PC builders by giving users ideal mounting, fitting and flow.

Description

The Thermaltake Pacific Series Extender fittings provide a complete water cooling solution for enthusiast and custom PC builders. Finished in black-plated copper, the G1/4 female to female extender fitting is designed with a side printed Tt logo. Choose from: 10mm, 20mm or 30mm extensions lengths to provide easier fitting

installation and loop management. Thermaltake fittings provide a complete solution for DIY enthusiasts and PC builders by giving users ideal mounting, fitting and flow.

Features

Tt LCS Certified is a Thermaltake exclusive certification applied only to products that pass the design and hardcore enthusiasts standards that a true LCS chassis should hold to. The Tt LCS certification was created so that we at Thermaltake can indicate to all power users which chassis have been tested to be best compatible with extreme liquid cooling configurations, ensuring you get the best performance from the best features and fitment.

High-Flow and Leak-Free Design

Made in Taiwan, the fittings allow proper connection to G1/4 ports, securing properly to cooling components while providing an even seal around the tubing. The fittings are available in chrome and black finishes, include three preinstalled O-ring. Use PETG tube for all your water cooling needs.

Remarkable Expansion

Thermaltake offers a full line of Pacific Series components for enthusiasts to build up aesthetically-superior water cooling systems by incorporating externally-modular upgrades for their chassis.

Specifications

| | |
|--------------|----------------------------|
| P/N | CL-W050-CU00BL-A (Black) |
| Dimension | φ22 x 30 (H) (mm) |
| Applicable | G 1/4 |
| Weight | 63 g |
| Material | CU |
| Screw Thread | G 1/4 |
| Note | Female to Female |

* Specifications are subject to change without notice.

* The product picture(s) is only for your reference, it may differ from the actual product.

Cautions:

Thermaltake recommends the following steps to be taken before using the Pacific series radiators and water blocks

1. To ensure a clean loop, flush and rinse your radiators and water blocks with distilled water prior to use.

2. Do not use tap water or distilled water as your coolant, it may harm your loop and reduce performance.
3. It is strongly recommended to use market proven pre-mix coolant, such as Thermaltake Coolant 1000. It offers great performance while protecting the entire liquid loop from corrosion.
4. Before storing your water cooling components, please clean, rinse and dry. This will ensure a longer lifespan for your components.

Thermaltake recommends the following steps to be taken after completing your water loop setup

1. It is strongly recommended to use market proven pre-mix coolant, such as Thermaltake Coolant 1000. It offers great performance while preventing the entire cooling system – copper, brass, nickel, aluminum, and steel – from corrosion.
2. Fill the reservoir with coolant and cycle the power on and off several times while the pump pushing the coolant into the loop.
3. DO NOT let the pump run dry, when there is no liquid entering the pump turn off your power immediately
4. Fill the reservoir to the top as it will prevent air from going into the pump
5. If necessary tilt the system slightly from side to side to bleed the air out of the loop.
6. Place some paper towels under fittings and joining points to test for leaks.
7. Run the loop with the fill port open for about 24 hours to completely bleed the air out of the loop

Additional Information

| | |
|----------------|------------------|
| Brand | Thermaltake |
| SKU | CL-W050-CU00BL-A |
| Weight | 0.2500 |
| Fitting Type | Extension |
| Fitting Size | 1/4" |
| Fitting Angle | Straight |
| Fitting Finish | Matte Black |

