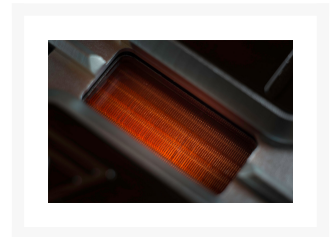


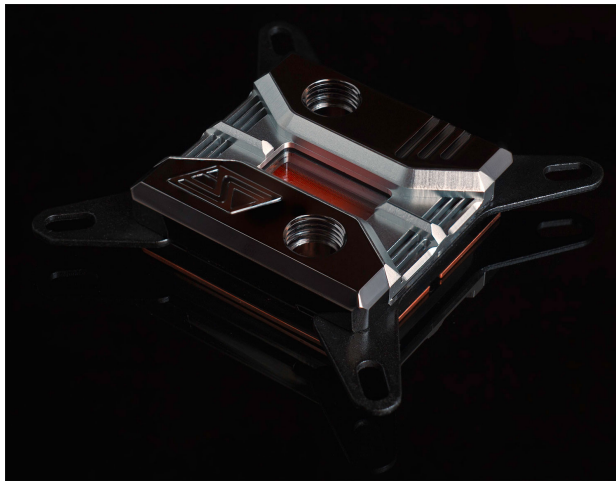


# Swiftech Apogee SKF CPU Waterblock - Acetal

\$69.95

## Product Images





## Short Description

---

The Swiftech Apogee™ SKF Prestige is a highly innovative CPU waterblock featuring a revolutionary cooling engine and customization options that allows users to go beyond their limits.

## Description

---

The Swiftech Apogee™ SKF Prestige is a highly innovative CPU waterblock featuring a revolutionary cooling engine and customization options that allows users to go beyond their limits.

## Features

---

Ahead of its time.

Out of the box, the Apogee SKF Prestige is compatible with all current and upcoming CPU's: From Intel's LGA 115x, 2011, 2011-v3 and 2066, to AMD's legacy AM2/3, AM4 and upcoming SP3/TR4.

The Apogee SKF Prestige also features an entirely new cooling engine made of 125 micron (< 5 thousandth's of an inch!) thick slotted fins! This new technology is at the very least one generation ahead of the competition and will be the foundation of Swiftech's next generation CPU waterblocks. We are already working on several declinations of this new fin plate to offer the best cooling performance for upcoming new CPU's from Intel and AMD.

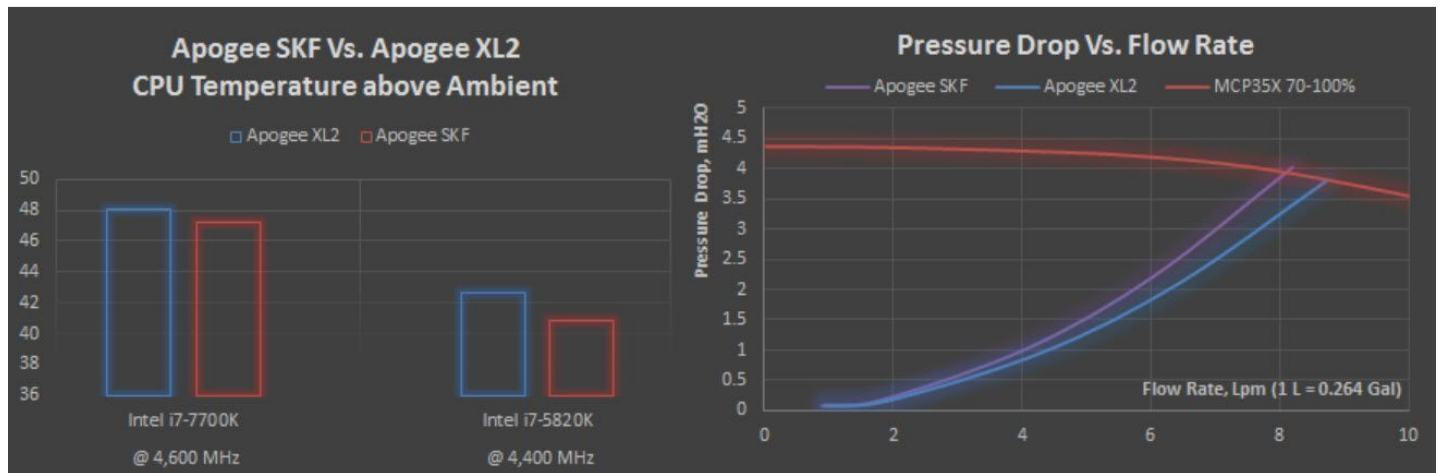
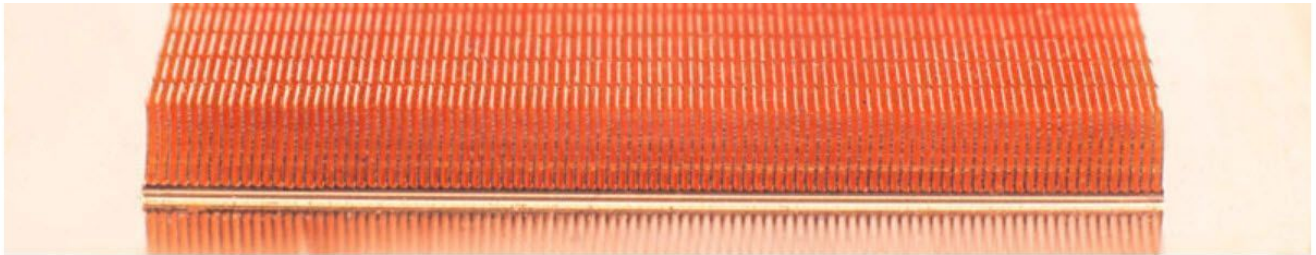
Customization options. Make it personal.

The Apogee SKF Prestige is fully compatible with Swiftech's Addressable RGB Iris Technology (the Swiftech Iris-Eco controller can be purchased separately). With 2 strips of RGB LED's built into the waterblock the Apogee SKF will blend into any color theme build.

Out of the box, the Apogee SKF Prestige comes with a Silver anodized cover plate and similarly to the Limited Edition Apogee SKF Heirloom Edition the Apogee SKF can be customized with 6 different color options for its cover plates.

*The Apogee SKF comes with a black sand blasted Acetal body. The Apogee SKF is also available with a luxury Black Chrome plated Brass body*

## Specifications



## Additional Information

---

Brand	Swiftech
SKU	APOGEE-SKF
Weight	1.5000
Color	Black
CPU Series	Intel's LGA 115x, 2011, 2011-v3, 2066 AMD AM2/3, AM4, SP3/TR4, Ryzen
Block CPU Type	Intel/AMD
Block Style	Copper

