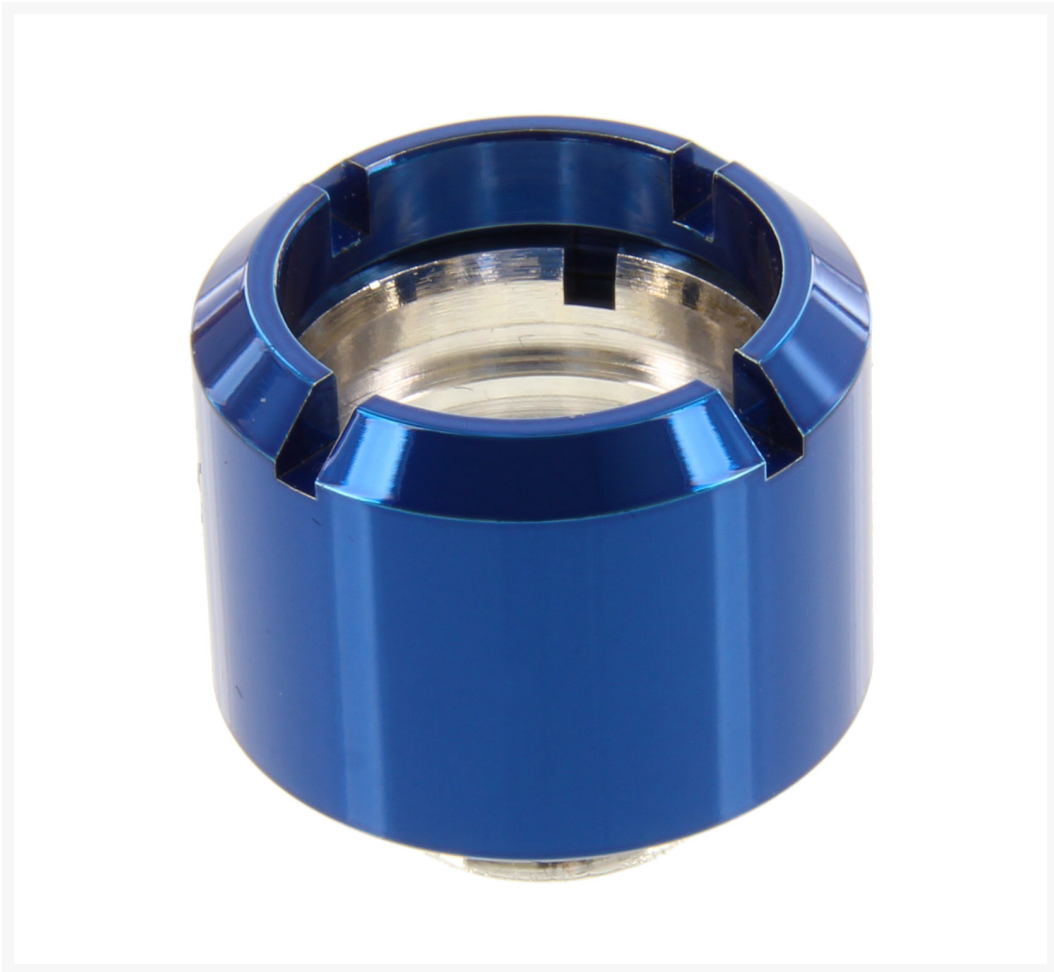




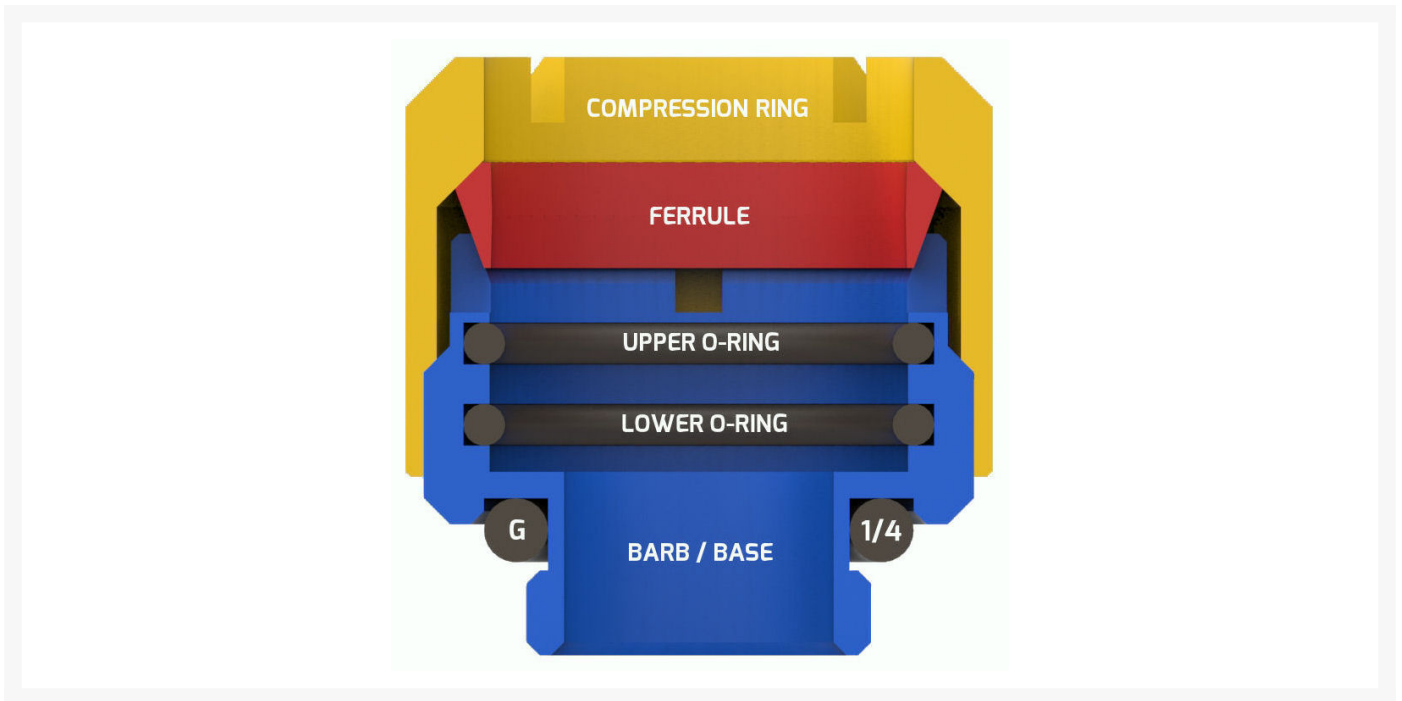
Monsoon Hardline Economy Compression Fittings, 1/2" x 5/8" - Blue

\$5.50

Product Images



MONSOON EV2 COMPRESSION FITTINGS					
DIMENSIONS (MM)			FITS TUBE O.D. (MM)		
FITTING	HEIGHT	O.D.	FROM:	TO:	
EV2-3812	17	20	11.8	13.2	
EV2-1258	17	22.4	15.2	16.2	
MONSOON EV2 COMPRESSION FITTINGS					
DIMENSIONS (INCH)			FITS TUBE O.D. (INCH)		
FITTING	HEIGHT	O.D.	FROM:	TO:	
EV2-3812	0.67	0.79	0.46	0.52	
EV2-1258	0.67	0.89	0.5	0.64	



Short Description

Designed as the second generation of Monsoon's popular line of Economy Fittings, EV2 features significant improvements in multiple areas including substantial improvements in resistance to tube pull out, reductions in tube wobble, and dual O-ring seals for improved leak prevention.

Description

Designed as the second generation of Monsoon's popular line of Economy Fittings, EV2 features significant improvements in multiple areas including substantial improvements in resistance to tube pull out, reductions in tube wobble, and dual O-ring seals for improved leak prevention.

The included tube sizing template allows you to select the exact ferrule and O-ring size needed for your tube regardless of the minor variations in outside diameters commonly found between various brands and even production batches of tube. Ferrules and O-rings are included to fit any tube O.D. between 15.2mm and 16.2mm so you can be confident that you are getting the best fit possible every build, every fitting, every time.

The increased fitting height decreases the "tube wobble" commonly found with push in type fittings, and the decreased outside diameter (O.D.) improves compatibility with blocks that have narrow port spacing.

Sold as single fitting or in budget friendly 6 and 12 packs and available in all 10 of our Monsoon color finishes allowing you to perfectly match products across the entire Monsoon line, including Rotaries, Light Port Rotaries, Stand Alone Pumps, our full line of plugs, (including EV2 Fitting Plugs) and the full MMRS reservoir line.

Features

FEATURES:

- Dual O-rings for a superior leak proof seal and reduced tube wobble.
- Hard plastic ferrule for industry leading pull-out resistance and reduced wobble.
- Wide size range—size inconsistencies between tube brands and batches no longer an issue.
- Compression ring and barb / base machined from marine grade brass.
- Includes black and color matched premium silicone G 1 / 4 O-rings.
- Available in all 10 Monsoon color finishes.
- Available in budget friendly singles, 6 and 12 packs.
- Anti-microbial silver plated barbs for cleaner “gunk free” loops.

Specifications

TUBE SIZE: Imperial O.D. 1/2" x 5/8" or any tube O.D. between 15.2mm and 16.2mm.

TUBE TYPE: Virtually any rigid tube—acrylic, PETG, raw or plated copper, (hard or soft drawn) raw or plated stainless, carbon fiber, glass, etc.

DIMENSIONS: See sizing chart in the product pictures area.

Additional Information

Brand	Monsoon
SKU	EV2-1258-1-BL
Weight	0.1500
Special Order	No
Fitting Type	Rigid Compression
Fitting Size	1/2" x 5/8"
Fitting Angle	Straight

