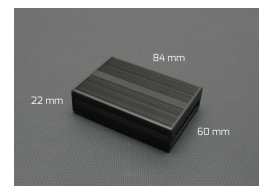
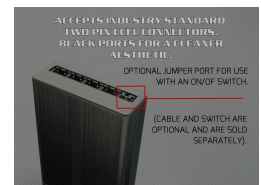
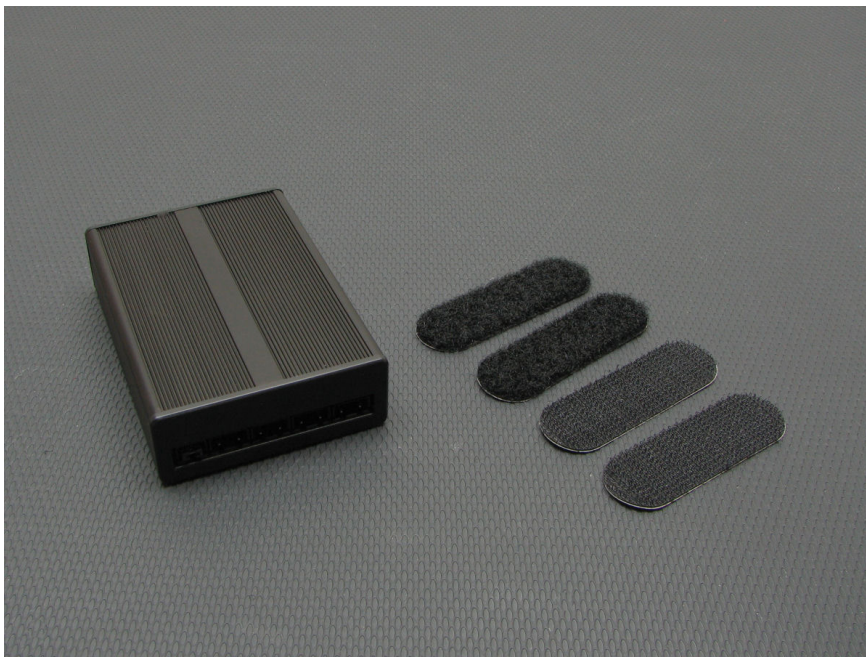




MONSOON CCFL INVERTER Rev. 2 – FOUR BULB

\$19.95

Product Images





Short Description

Features an anodized black aluminum case with finned design for a clean unobtrusive look that makes “hiding” the inverter in your build much easier. Includes 3M™ adhesive hook and loop pads for super simple mounting just about anywhere in your case.

Description

Features an anodized black aluminum case with finned design for a clean unobtrusive look that makes “hiding” the inverter in your build much easier. Includes 3M™ adhesive hook and loop pads for super simple mounting just about anywhere in your case.

Built with top quality components for a worry and “whine” free installation, the inverter has two modes of operation that can be set via a front jumper. The stock configuration does not require a discrete power switch—the inverter (and lights) powers on and off with your PC. The second mode is optional and allows you to connect a discrete switch, (sold separately) that you can mount elsewhere in your case that allows you to power the lights on and off at will.

Powers four bulbs up to 300mm in length.

Requires a SATA power plug from your PSU.

****NOTE: Only can be used with Monsoon Cathodes****

Specifications

PART NUMBER: CCFL-INV-4-BA

DESCRIPTION: CCFL INVERTER FOR 4 BULBS

DIMENSIONS: 22mm X 84mm X 60mm

Additional Information

Brand	Monsoon
SKU	CCFL-INV-REV2-4
Weight	0.4000
Color	Black
Light Accy Type	Inverter

