

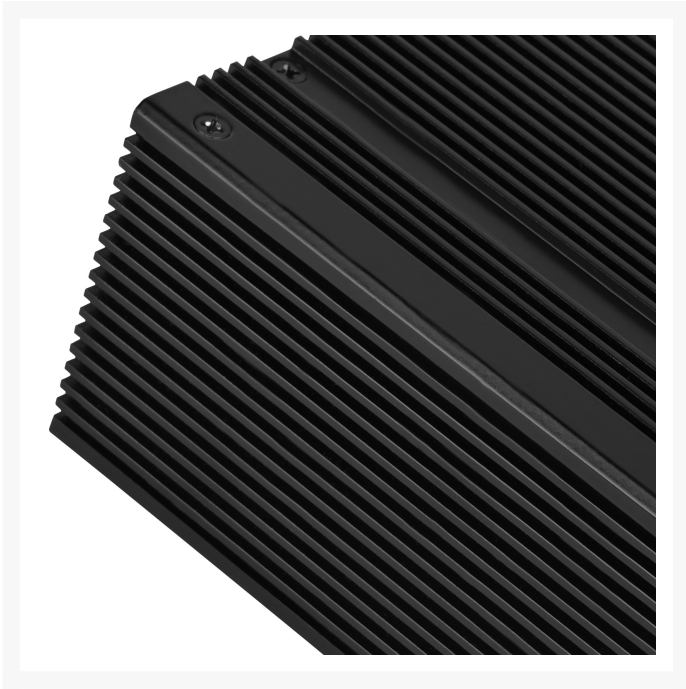


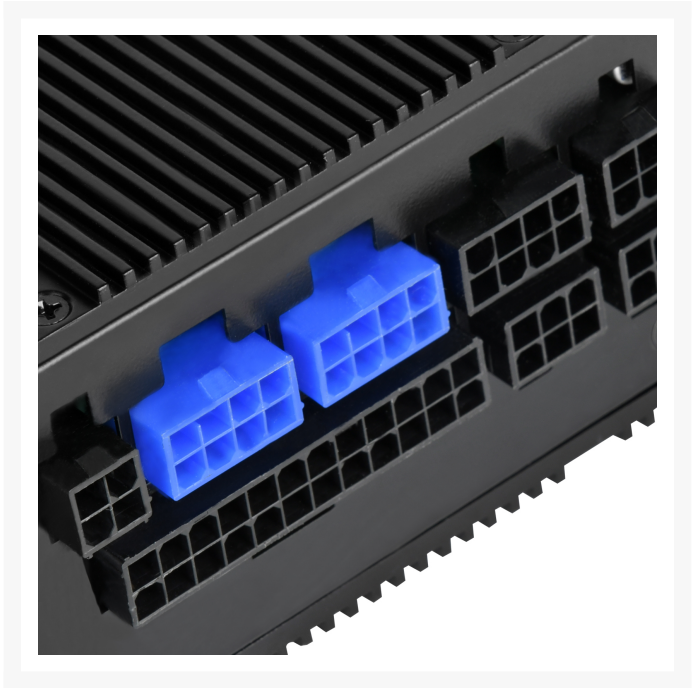
Silverstone Nightjar 450W 80 PLUS Platinum Fanless Power Supply

Special Price
\$189.59 was
\$236.99

Product Images







Short Description

SilverStone creates another milestone for small form factor PCs once again with a Nightjar fanless power supply entry, the NJ450-SXL. In pursuit of crafting the ultimate SFX-class sized silent PSU, SilverStone engineers employed premium components and innovative engineering to achieve the first ever fanless SFX-L design.

Description

SilverStone creates another milestone for small form factor PCs once again with a Nightjar fanless power supply entry, the NJ450-SXL. In pursuit of crafting the ultimate SFX-class sized silent PSU, SilverStone engineers employed premium components and innovative engineering to achieve the first ever fanless SFX-L design. With its 80 PLUS Platinum level of efficiency reducing wasted heat, this noise-less unit can maintain stringent electrical performance up to 40°C operating environment while delivering powerful +12V output of 37.5A for high-end system usage. Included with the NJ450-SXL is a set of flexible, flat modular cables designed for small form factor PCs to make assembly easy and to improved case airflow. For professionals and SFF enthusiasts looking to build compact PCs or workstations for specialized settings such as recording studio or sound-optimized laboratories, the NJ450-SXL with its quality, stability, and reliability, are sure to satisfy.

Features

- Fan-less thermal solution, 0 dBA acoustics
- SFX-L form factor for use in small form factor computers
- High efficiency with 80 PLUS Platinum level of efficiency
- 100% modular short cables with flexible flat arrays
- 24/7 continuous power output with 40°C operating temperature
- Class-leading single +12V rail
- PCI-E 8pin and PCI-E 6pin connectors support

Specifications

Model No.	SST-NJ450-SXL				
Max. DC Output	450W				
Power density	436W per liter				
Load Range					
	+3.3V	+5V	+12V	+5VSB	-12V
Max.(Amps)	16A	15A	37.5A	2.5A	0.3A
Peak (Amps)	/	/	/	3.0A	/
Min.(Amps)	0A	0A	0A	0A	0A
Range (%)	±3%	±3%	±3%	±5%	±10%
Line Reg.(%)	±1%	±1%	±1%	±1%	±1%
Ripple(mVp-p)	50mV	50mV	120mV	50mV	120mV
Color	Black				
Combined +3.3V & +5V	100W				
Combined +12V	450W				
Input Voltage	90V ~ 264V				

Input Frequency Range	47Hz ~ 63Hz
PFC	Active PFC (PF>0.9 at full load)
Efficiency	89%~92% at 20%~100% loading
MTBF	100,000 hours
Operating temperature	0 ~ 40°C
Protection	Over Current Protection Over Power Protection Over Voltage Protection Short Circuit Protection Over Temperature Protection
Connectors	1 x 24 / 20 -Pin motherboard connector (300mm) 1 x 8 / 4-Pin EPS / ATX 12V connector (400mm) 4 x 8 / 6-Pin PCIe connector ("400mm / 150mm" x 2) 8 x SATA connector ("300mm / 200mm / 100mm / 100mm" x 2) 3 x 4-Pin Peripheral connector (300mm / 200mm / 200mm) 1 x 4-Pin Floppy connector (100mm)
Cooling System	Fan Less thermal solution
Form factor	SFX-L
Noise Level	0 dBA
Dimension	130 mm (W) x 63.5 mm (H) x 125 mm (D) 5.12" (W) x 2.5" (H) x 4.92" (D)
Weight	1.52 kg
Certification	80 PLUS Platinum
Other	GPU Support list Compatible with ATX12V v2.4

● Specifications presented on this page contains most recent revisions and may differ from those printed on retail boxes or manuals.

Additional Information

Brand	SilverStone Technology
SKU	SST-NJ450-SXL
Weight	6.0000
Color	Black
PSU Type	ATX
PSU Style	Modular
PSU Wattage	450W
PSU Efficiency	80 PLUS Platinum
Vendor SKU/EAN	844761016180
Special Price	\$189.59

