

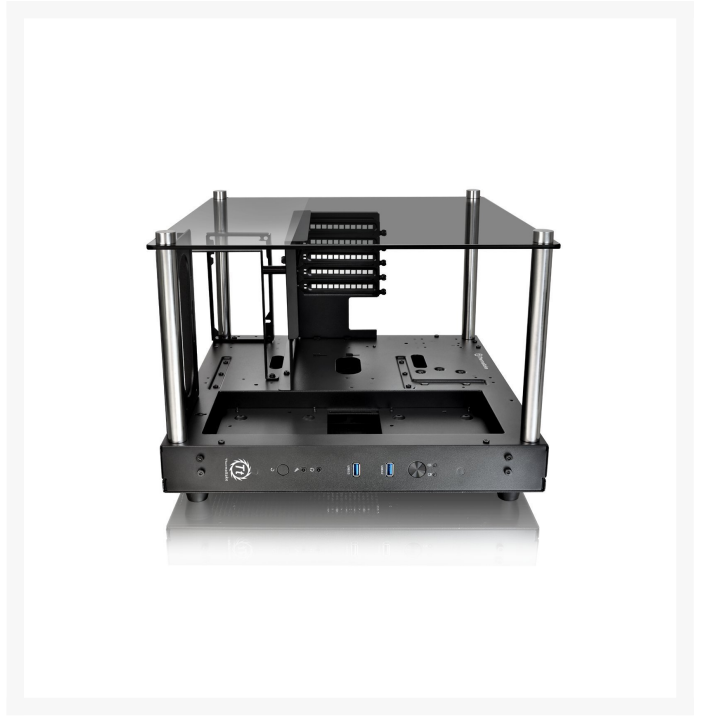
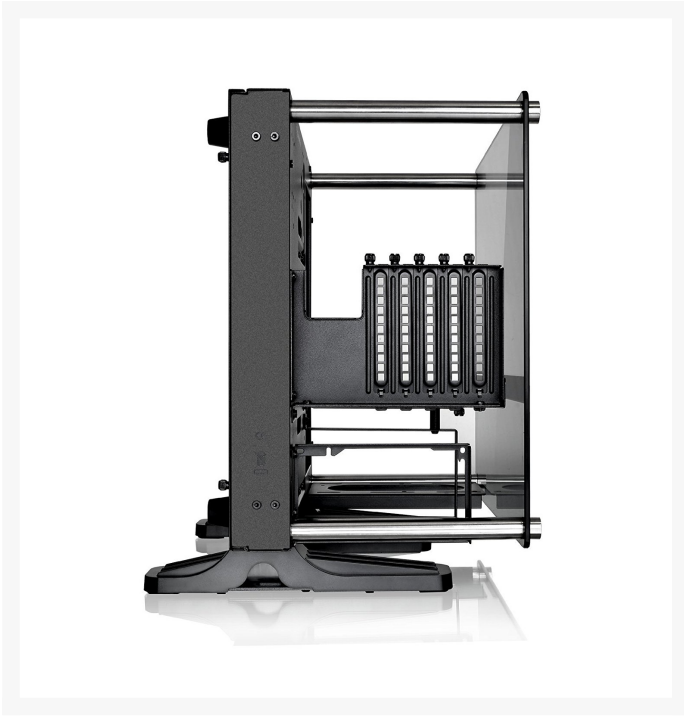


Thermaltake Core P1 TG Mini ITX Wall-Mount Chassis - Black

\$129.99

Product Images





Short Description

Thermaltake expands its Core P Series by adding the Core P1 TG Mini ITX wall-mount, tempered-glass chassis to the lineup. The Core P1 TG Mini ITX boasts open frame panel design with a 5mm thick tempered glass panel to protect the components and allows users to show off the hardware inside. It also supports the latest PC hardware, AIO and DIY liquid cooling solutions, and has the flexibility of building horizontal/vertical system by its multiple placement design. The Core P1 TG Mini ITX makes a stunning display for high-end enthusiast builds without sacrificing performance and taking up too much desk space.

Description

Thermaltake expands its Core P Series by adding the Core P1 TG Mini ITX wall-mount, tempered-glass chassis to the lineup. The Core P1 TG Mini ITX boasts open frame panel design with a 5mm thick tempered glass panel to protect the components and allows users to show off the hardware inside. It also supports the latest PC hardware, AIO and DIY liquid cooling solutions, and has the flexibility of building horizontal/vertical system by its multiple placement design. The Core P1 TG Mini ITX makes a stunning display for high-end enthusiast builds without sacrificing performance and taking up too much desk space.

Features

Tt LCS Certified

Tt LCS Certified is a Thermaltake exclusive certification applied to only products that pass the design and

hardcore enthusiasts standards that a true LCS chassis should be held to. The Tt LCS certification was created so that we at Thermaltake can designate to all power users which chassis have been tested to be best compatible with extreme liquid cooling configurations to ensure you get the best performance from the best features and fitment.

5 mm Thick Tempered Glass Window Design

The 5 mm thick tempered glass window guarantees the durability of the window and the most exciting panoramic viewing. With the enlarged window design, users get to access the ultimate visual presentation and admire all components of the liquid-cooling system.

Built for Makers

By practicing and incorporating the idea of “maker movement” as well as 3D printing, Thermaltake designs the open frame panoramic viewing chassis as anyone can access and do his/her own mods as well as print out his/her own ideas using available liquid cooling components and manuals without boundaries.

Users can download 3D printing accessory files on 3D Makers Microsite, printing them out to do a special mod.

DMD – Dismantlable Modular Design

The Core P1 TG Mini ITX open frame chassis enables user to freely build the system from the ground up with given modular panels, racks, brackets, and pre-design mounting arrays. No more unreachable screw corners or gaps; making installation a breeze with the Dismantlable Modular Design.

3-Way Placement Layout

The Core P1 TG Mini ITX is designed for use in three different ways: Wall-mount, vertical, and horizontal placement. Built for customization that reflects the makers’ personality, it allows for adjustments to the chassis for the best viewing presentation while ensuring outstanding cooling performance.

Users can hang it on the wall as decoration, take it to wherever they want and display the nice builds vertically or horizontally.

Versatile GPU Orientation

Show off your graphic card and power supply with our special design bracket! The Core P1 TG Mini ITX has included a standard riser cable and adjustable PSU bracket for users to choose the way they want to build the system.

Thermaltake TT Premium PCI-E 3.0 Extender (Optional) – Supports a wide range of GPU solutions with ultra-excellent quality. Features like, extreme high-speed cable with highly-routable design, EMI shielding with conducting polymer are crafted for meeting the most demanding system. Available in 300mm, 600mm and 1000mm length.

**Thermaltake makes no representation or warranty that the included standard riser cable will be suitable for any specified computer system without further testing. If you need any technique supports, please contact Thermaltake Global Service Center.*

Native AIO Support

The Core P1 TG Mini ITX is natively supported for radiator size 1x 120 mm/ 2 x 120 mm (240mm) of All-In-One liquid cooling solution without the need for an extra bracket.

Supreme Hardware Support

The Core P1 TG Mini ITX offers the most flexible mounting option with the special designed mounting array which supports up to two 120mm fans on the left side and up to a 240mm radiator. Further, the "1+3" drive trays are included and hidden in the back panel that offers 45mm of cable management space.

Specifications

P/N	CA-1H9-00T1WN-00
Case Type	Mini Case
Dimension (H x W x D)	422 x 332 x 380 mm (16.6 x 13.1 x 15 inch)
Net Weight	9.5 kg / 20.9 lb
Side Panel	Tempered Glass (5mm thickness)
Color	Black
Material	SPCC
Drive Bays	-Accessible 2 x 2.5" (Outside the chassis) -Hidden 1 x 3.5" or 2.5" (Inside the chassis) 1 x 2.5" (Inside the chassis)
Expansion Slots	5
Motherboards	6.7" x 6.7" (Mini ITX)
I/O Port	USB 3.0 x 2 , HD Audio x 1
PSU	Standard PS2 PSU (optional)
Fan Support	Left Side: 2 x 120mm

Radiator Support	Left Side: 1 x 240mm
Clearance	CPU cooler height limitation: 170mm VGA length limitation: 380mm (Radiator thickness under 30mm without fan) PSU length limitation: 180mm Radiator Width Limitation: 122mm

* Specifications are subject to change without notice.

* The product picture(s) is only for your reference, it may differ from the actual product.

Additional Information

Brand	Thermaltake
SKU	CA-1H9-00T1WN-00
Weight	28.0000
Color	Black
Chassis Form Factor	MiniITX
Side Panel	Window
Motherboard Support	Mini ITX
Material	Steel
PSU Wattage	No PSU
Vendor SKU/EAN	Drop Shipped

