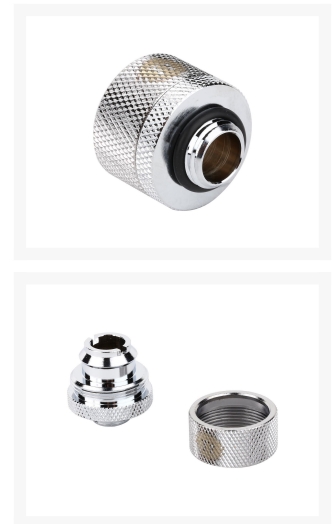




Thermaltake Pacific 1/2" ID x 3/4" OD Compression – Chrome

\$9.99

Product Images



Short Description

Thermaltake introduces the Pacific Series Compression fittings for the ultimate in custom PC water cooling configurations. Finished in chrome-plated copper, the compression fitting includes a base barb and quality O-ring with side printed Tt logo. Choose from: 5/8" and 3/4" OD compression size, Thermaltake fittings provide a complete solution for DIY enthusiasts and PC builders by giving users ideal mounting, fitting and flow.

Description

Thermaltake introduces the Pacific Series Compression fittings for the ultimate in custom PC water cooling configurations. Finished in chrome-plated copper, the compression fitting includes a base barb and quality O-ring with side printed Tt logo. Choose from: 5/8" and 3/4" OD compression size, Thermaltake fittings provide a complete solution for DIY enthusiasts and PC builders by giving users ideal mounting, fitting and flow.

Features

Tt LCS Certified is a Thermaltake exclusive certification applied only to products that pass the design and hardcore enthusiasts standards that a true LCS chassis should hold to. The Tt LCS certification was created so that we at Thermaltake can indicate to all power users which chassis have been tested to be best compatible with extreme liquid cooling configurations, ensuring you get the best performance from the best features and fitment.

High-flow and Leak-free Design

Made in Taiwan, the fittings allow proper connection to G1/4" ports, securing properly to cooling components while providing an even seal around the tubing. The fittings are available in chrome and black finishes, include one preinstalled O-ring. Use flexible tubing for all your water cooling needs.

For tubes:

- Inner diameter: 1/2" (13 mm)
- Outer diameter: 3/4" (19 mm)

Remarkable Expansion

Thermaltake offers a full line of Pacific Series components for enthusiasts to build up aesthetically-superior water cooling systems by incorporating externally-modular upgrades for their chassis.

Specifications

P/N	CL-W030-CA00SL-A (Chrome)
Dimension	∅25 x 24.7 (H) (mm)
Applicable	OD : 3/4" (19 mm) ID : 1/2"(13 mm)
Weight	53 g
Material	CU
Screw Thread	G 1/4
Note	Connector To Tube

* Specifications are subject to change without notice.

* The product picture(s) is only for your reference, it may differ from the actual product.

Additional Information

Brand	Thermaltake
SKU	CL-W030-CA00SL-A
Weight	0.1500
Special Order	No
Fitting Type	Compression
Fitting Size	1/2" x 3/4"
Fitting Angle	Straight
Fitting Finish	Chrome

