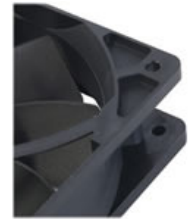




Scythe 120x25mm SlipStream PWM SY1225SL12HP 110 CFM - Sleeved

Special Price
\$4.00 was
\$9.95

Product Images



Short Description

From Scythe, the Slipstream 120mm PWM, model # SY1225SL12H-P, is the high speed variant. It's speeds range from 500 to 1900 RPM (+/- 10%), and can output up to 110.31 CFM.

Description

From Scythe, the Slipstream 120mm PWM, model # SY1225SL12H-P, is the high speed variant. It's speeds range from 500 to 1900 RPM (+/- 10%), and can output up to 110.31 CFM.

Features

Slip Stream 120 PWM

The new Slip Stream PWM 120 mm fan can work by using a PWM enabled motherboards, which are automatically controlled. Slip Stream 120 PWM fan offers the same features such as the Slip Stream and a silent user can obtain more airflow without sacrificing in noise level.

More Airflow

Compare to a standard 120 mm case fan available in the market, Scythe Slip Stream 120 mm case fan generates more airflow (Approximately 20~40% more).

4-Pin Peripheral Adapter Provided

To be versatile, this case fan comes with the 4-pin peripheral adapter.

Specifications

Model #	Dimension (mm)	Fan Speed	Fan Noise	Air Flow
SY1225SL12H-P	120x120x25	50500 (+200)rpm - 1.900 (±10%) rpm	7.5 ~ 37.0 dBA	24.50 ~ 110.31 CFM

Weight: 121 g | 4.26 oz

Rated Voltage: DC12V

Connector: 3-Pin (4-Pin Molex Adapter include)

FDB Sleeve Bearing

MTBF: 30,000 hours

Additional Information

Brand	Scythe
SKU	SY1225SL12H-P-D
Weight	0.6000
Color	Black
Fan Dimensions	120mm
Fan Width	25mm
Fan Connection	3-Pin
Fan Voltage	12 VDC
Fan RPM	1900
Fan CFM	110
Fan Noise (dB)	37
Vendor SKU/EAN	89409200364
Special Price	\$4.00

