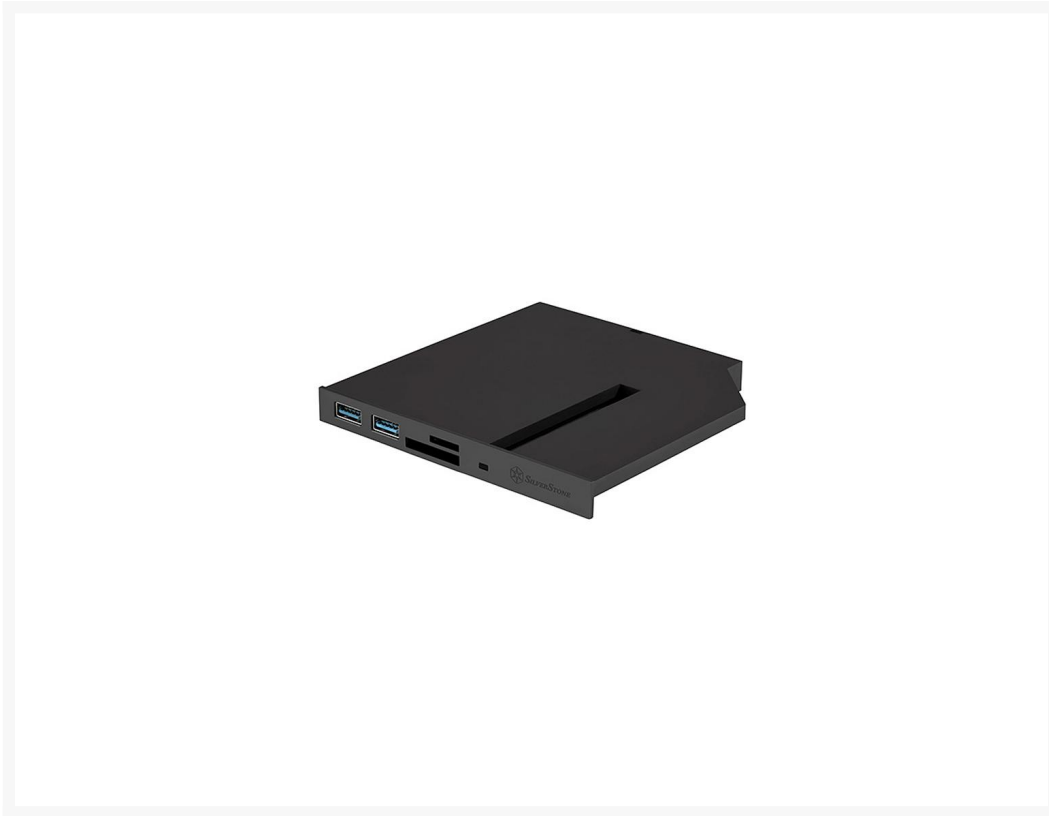


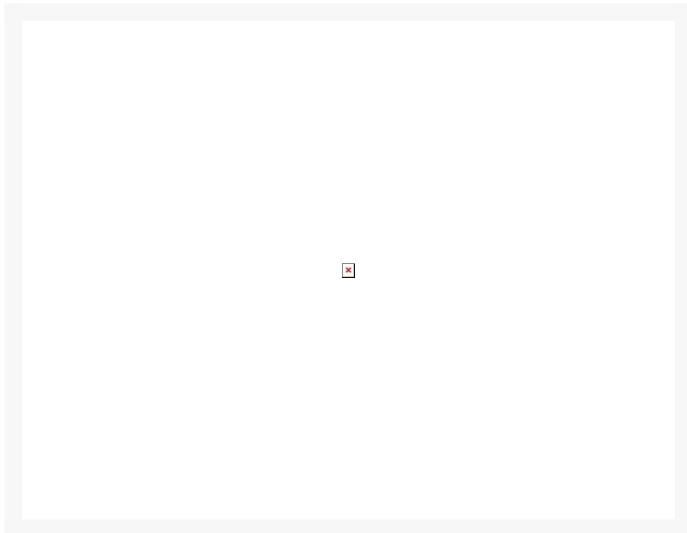


SILVERSTONE SST-FPS01 Bay Device

\$56.99

Product Images





Short Description

To meet the user's demand for unused 12.7mm tray-loading slim optical bay, SilverStone created the FPS01, a multifunction front panel. It provides extra USB slots, SD card reader, and a M.2 SATA type SSD slot (B Key) for more expansion capability and space utilization. In addition, it includes both black and white colored panel to better match most cases.

Description

To meet the user's demand for unused 12.7mm tray-loading slim optical bay, SilverStone created the FPS01, a multifunction front panel. It provides extra USB slots, SD card reader, and a M.2 SATA type SSD slot (B Key) for more expansion capability and space utilization. In addition, it includes both black and white colored panel to better match most cases.

Features

- Support 12.7mm tray-loading slim optical bay
- Two USB 3.0 Type-A ports (FPS01)
- One USB 3.0 Type-C port (FPS01-C)
- Includes Micro SD and SD card reader
- Built-in M.2 SATA type SSD slot (B Key)
- Unique USB 3.0 19pin daisy-chain design retains Mini-ITX chassis' original USB port function

Specifications

Model No.	SST-FPS01 SST-FPS01-C
Color	Black with optional white panel
Material	Plastic panel, plastic body
Pin definition	USB 3.0 Type-A x 2 (FPS01) USB 3.0 Type-C x 1 (FPS01-C)
LED indicator	Indicate drive's power & card reader read / write access
Application	External 12.7mm Tray-loading Slim ODD Bay
Interface	USB 3.0 (5Gbps)
Media card support	Micro SD and standard SD / SDHC / SDXC
Support Type of M.2 SSD	B Key SATA Type M.2 SSD Slot x 1* Support 22mm x 40mm, 22mm x 60mm or 22mm x 80mm size
Operating system support	Microsoft Windows 10/8.1/8/7, Mac 10.2.8 or future release versions
Dimension	128mm (W) x 13mm (H) x 129mm (D) 5.04" (W) x 0.51" (H) x 5.08" (D)

Additional Information

Brand	SilverStone Technology
SKU	SST-FPS01
Weight	1.0000
Color	Black
Device Type	Card Reader
Bay Size	5.25" Bay
Vendor SKU/EAN	844761013974

