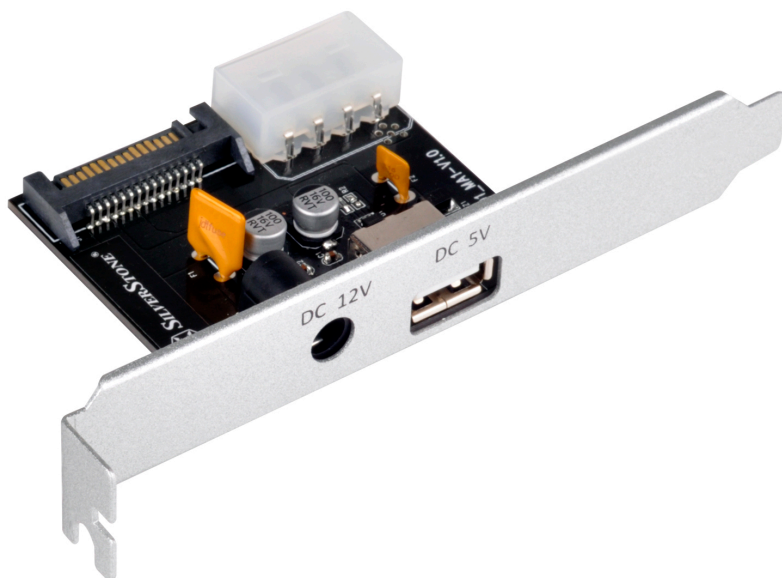


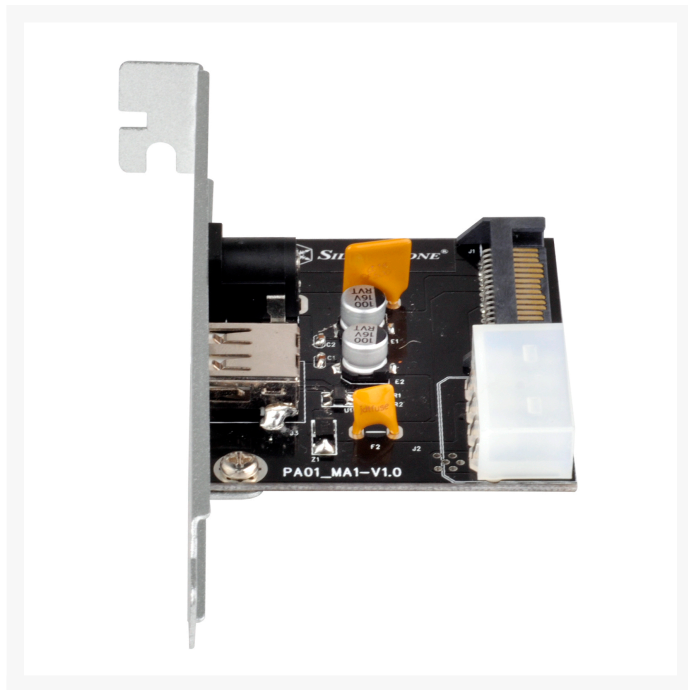


SilverStone ECP01 Dual Output Power Adapter

\$11.99

Product Images





Short Description

SilverStone's ECP01 is a dual output power adapter card that can transfer a computer's internal power to external 12V DC jack and 5V USB Type-A port via peripheral 4-Pin or SATA 15-Pin connectors. This adds flexibility to your PC in being able to support additional power to devices such as external drives or USB chargers. ECP01's DC jack connector can provide 12V up to 5A and its USB Type-A port can support 5V up to 3A. It is also compliant with USB battery charging specification 1.2 so it can charge mobile devices quickly while the built-in over current protection mechanism helps to ensure connected devices are well protected when charging.

Description

SilverStone's ECP01 is a dual output power adapter card that can transfer a computer's internal power to external 12V DC jack and 5V USB Type-A port via peripheral 4-Pin or SATA 15-Pin connectors. This adds flexibility to your PC in being able to support additional power to devices such as external drives or USB chargers. ECP01's DC jack connector can provide 12V up to 5A and its USB Type-A port can support 5V up to 3A. It is also complaint with USB battery charging specification 1.2 so it can charge mobile devices quickly while the built-in over current protection mechanism helps to ensure connected devices are well protected when charging.

Features

- Dual output 12V DC jack up to 5A and 5V USB Type-A port up to 3A
- USB port compliant with USB battery charging specification 1.2
- Intelligent over current protect system
- Includes DC to DC cable with 1.2m length, DC dim 2.5mm to DC dim 2.1mm Power Plug Adapter
- Includes optional low profile bracket for supporting low profile cases

Specifications

Model No.	SST-ECP01
Input connector and current	Peripheral 4-Pin female connector x 1 (12V/5V) or SATA 15-Pin female connector x 1 (12V/5V)
Output connector and current	DC jack connector x 1 (12V/5A) USB Type-A female connector x 1 (5V/3A)
Intelligent Security Protection	Over current protection
Cable length and specifications	DC plug 1.2m cable with 18 AWG x 1 and OD 3.5mm DC dim 2.5mm to DC dim 2.1mm adapter
Net weight	35g
Dimension	120mm (W) x 21mm (H) x 53mm (D) 4.72" (W) x 0.83" (H) x 2.09" (D)
Remark	

* Prior to installing ECP01, please calculate your computer's total power consumption to determine if you have enough power to support this card. You should set aside 75W and a dedicated cable to connect directly from the power supply to ECP01. The cable used on the ECP01 should not be shared with any other components in the PC.

Additional Information

Brand	SilverStone Technology
SKU	RL-ECP01
Weight	0.5000
Color	Silver
Card Function	Power Adapter Card
Ports	DC jack connector / USB-A female connector
Vendor SKU/EAN	844761013738

