

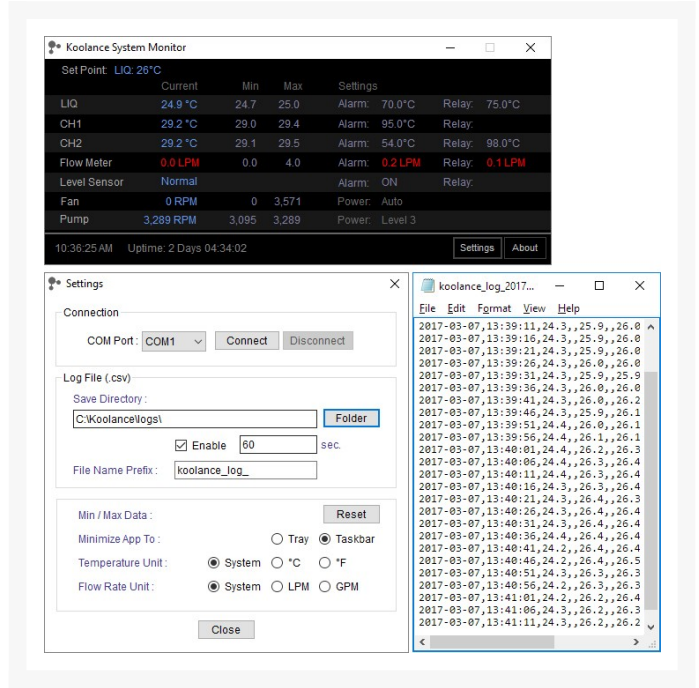


RPM-ALX400 Reservoir and Pump Module for ALX Series

\$626.99

Product Images





Short Description

RPM-ALX400 is a front reservoir, pump, and control unit for Koolance's ALX modular cooling systems. Included hardware allows it to be physically combined with an HXM heat exchanger module (sold separately).

Description

RPM-ALX400 is a front reservoir, pump, and control unit for Koolance's ALX modular cooling systems. Included hardware allows it to be physically combined with an HXM heat exchanger module (sold separately).

This unit has a USB port for viewing and logging of temperature and sensor data via the Koolance System Monitor application.

NOTE: Requires 12VDC input power. Koolance offers a separate power supply for AC wall outlet sources.

Features

- Temperature in °C/°F with set-point based on: liquid (-30 to 90°C), or one of two optional K-type thermocouples (-20 to 120°C)
- Pump: 10 manual levels, up to 8.2LPM (2.2GPM)
- Select only values you want displayed on the front 2-line OLED display (fixed or rotating)
- **Show coolant flow rate in LPM/GPM
- Show pump impeller speed in RPM
- **Show radiator fan speed in RPM

- Enable audio alarm based on: temperature, **flow rate, and/or reservoir coolant level
- Enable relay trigger (NO or NC) based on: temperature, **flow rate, and/or reservoir coolant level
- Power input: 12VDC, 25W (plus any connected HXM modules)
- Reservoir capacity: 400ml (13.5 fl oz)
- G 1/4 BSPP threads on back for fittings

**When attached to an HXM heat exchanger module

Specifications

General

Max Pressure @ 25°C 2kgf/cm2 (28.5psi)

Max Temperature 60°C (140°F)

Reservoirs

Capacity

Display Type OLED

Pump PMP-400 @ 12V

Temperature Sensors Liquid & Two K-Type Thermocouples (optional)

Pumps

Max Flow Rate 8.2LPM (2.2GPM)

Voltage 12 VDC

Additional Information

Brand	Koolance
SKU	RPM-ALX400
Weight	4.7500
Color	Black
Reservoir Capacity	400ml
Flow Rate	2.2 Gal/Min
Power Source	12V DC
Vendor SKU/EAN	Special Order

