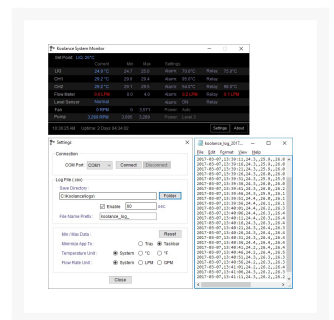




Koolance ALX-750-P400 Modular Liquid Cooling System

\$846.99

Product Images



Short Description

Koolance's ALX series are powerful liquid cooling systems with expandable thermal capacities and software logging. ALX-750-P400 provides approximately 750W of cooling using a single fan radiator.

Description

Koolance's ALX series are powerful liquid cooling systems with expandable thermal capacities and software logging. ALX-750-P400 provides approximately 750W of cooling using a single fan radiator.

This version includes the RPM-ALX400 and HXM-ALX750 modules. These are quickly combined during installation, and individually upgradeable if requirements later change. The front "RPM" contains the pump, reservoir, electronics, and sensors. The rear "HXM" houses the heat exchanger, fans, and flow meter.

***PLEASE NOTE: You will need the Koolance DC12V PSU (PSU-ALX12V) to run and ALX unit. You CANNOT use your computers 12V DC PSU for this! All ALX units use NPT fittings are needed for the hoses in and out of the front of the unit. Do NOT order BSPP (G1/4) fittings for this!

Features

- Cooling capacity: 750W (2559BTU/hr) with 25°C liquid-ambient delta @ 5.5LPM
- Temperature in °C/°F with set-point based on: liquid (-30 to 90°C), or one of two optional K-type thermocouples (-20 to 120°C)
- Pump: 10 manual levels, up to 5.5LPM (1.5GPM)
- Select only values you want displayed on the front 2-line OLED display (fixed or rotating)
- Show coolant flow rate in LPM/GPM
- Show pump impeller speed in RPM
- Show radiator fan speed in RPM
- Enable audio alarm based on: temperature, flow rate, and/or reservoir coolant level
- Enable relay trigger (NO or NC) based on: temperature, flow rate, and/or reservoir coolant level
- Power input: 12VDC, 49W or higher
- Reservoir capacity: 400ml (13.5 fl oz)
- 1/4 NPT threads on back for fittings

Specifications

General

Max Pressure @ 25°C 2kgf/cm2 (28.5psi)

Max Temperature 60°C (140°F)

Cooling Systems

Cooling Capacity 750W (2559BTU/hr) @ 25°C liquid-ambient (25°C dT)

Display Type OLED

Flow Rate 5.5LPM (1.5GPM)

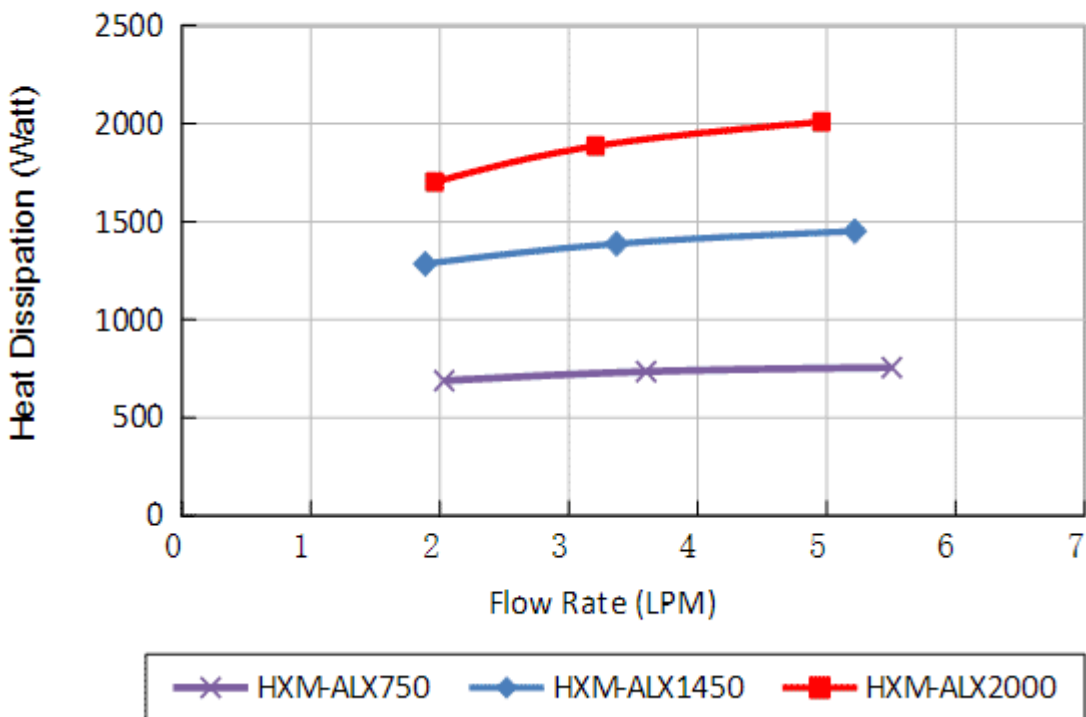
Max Power Consumption 49W

Power Source 12 VDC

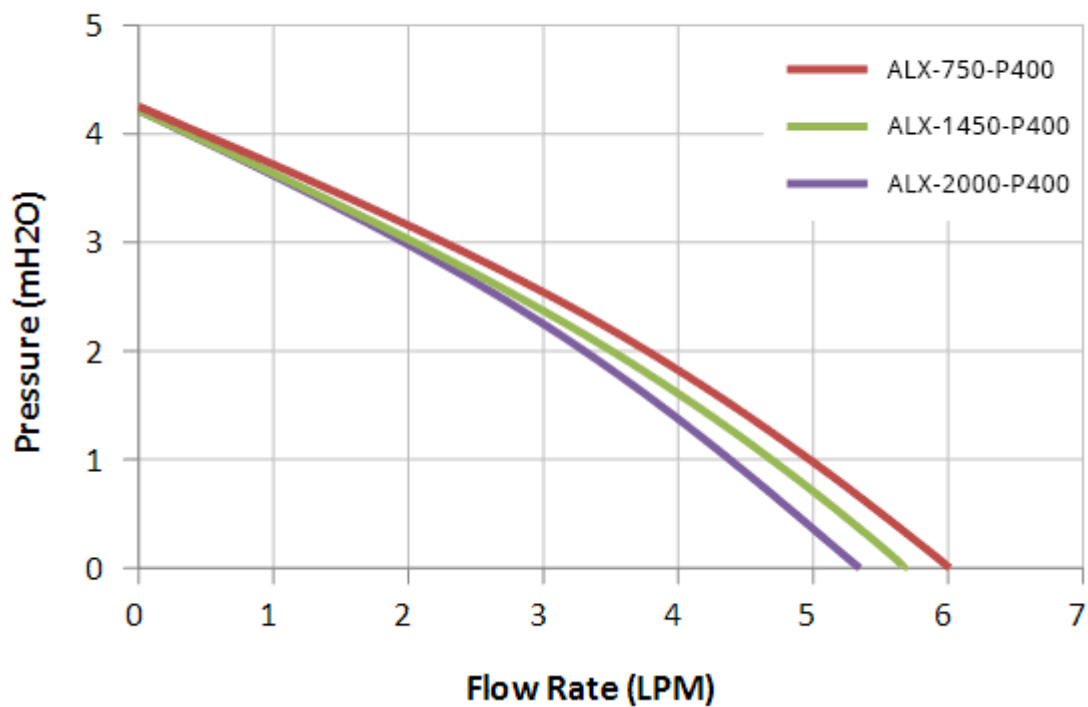
Radiator Brass/Copper, 1 x 120mm fan

Temperature Sensors Liquid & Two K-Type Thermocouples (optional)

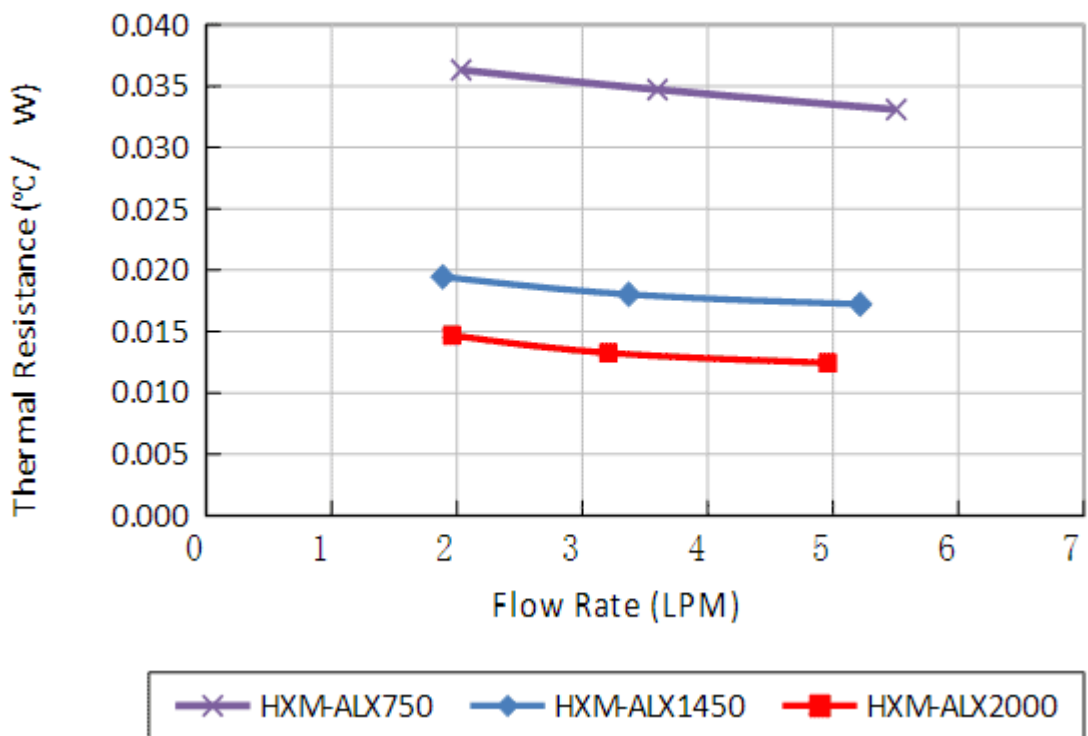
ALX Systems
($\Delta T = \text{Inlet Water} - \text{Ambient} = 25^\circ\text{C}$)



ALX System Pump Output



ALX Systems
 $(\Delta T = \text{Inlet Water} - \text{Ambient} = 25^\circ\text{C})$



Additional Information

Brand	Koolance
SKU	ALX-750-P400
Weight	8.0000
Color	Black
Reservoir Capacity	400ml
Cooling Capacity	750W
Flow Rate	1.5 Gal/Min
Power Source	12V DC
Vendor SKU/EAN	Special Order

