



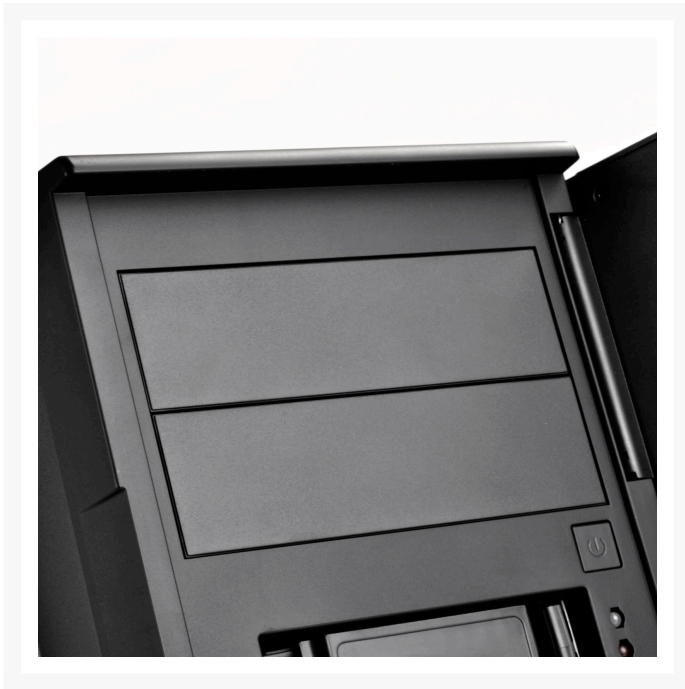
SilverStone Case Storage Series SST-CS380 Black Plastic front door, steel body ATX Mid Tower Computer Case Standard PS2(ATX) Power Supply

\$209.99

Product Images







Short Description

To fulfill the needs of enthusiasts looking for a compact, flexible NAS tower chassis, SilverStone designed the CS380. With the ability to accommodate standard components such as ATX motherboards, standard ATX (PS2) power supplies, dual 5.25" drive bays, standard-sized expansion cards, and even liquid coolers, the CS380 can easily meet the demands for majority of NAS builds.

Description

To fulfill the needs of enthusiasts looking for a compact, flexible NAS tower chassis, SilverStone designed the CS380. With the ability to accommodate standard components such as ATX motherboards, standard ATX (PS2) power supplies, dual 5.25" drive bays, standard-sized expansion cards, and even liquid coolers, the CS380 can easily meet the demands for majority of NAS builds. Equipped with two 120mm intake fans, a 120mm rear exhaust fan, and easily removable filters, keeping everything cool and dust-free is as easy as in any SilverStone premium chassis. Safety features such as lockable front door and power button are also included.

Completing a great chassis structure is a modular, eight hot-swappable drive cage design that support both 3.5" and 2.5" drives. It utilizes a custom backplane supporting both SATA and SAS interfaces for increased compatibility with nearly all modern hard drives or SSDs. With a size that is nearly identical to most ATX mid towers, the space-saving CS380 is perfect for anyone looking to build a powerful NAS for home or office.

Features

- Compact mid-tower chassis design with space-saving footprint
- Supports eight hot-swappable 3.5" or 2.5" SAS/SATA drives with built-in backplane
- Classic SilverStone styling
- Includes two flexible 5.25" drive bays for more storage options
- Lockable front door and power button design
- Includes three 120mm fans with filtered intake vents

Specifications

	SST-CS380B (black)
Model No.	--
	--
	--
Material	Plastic front door, steel body
Motherboard	ATX, Micro-ATX, Mini-ITX

Drive bay	External	5.25" x 2
	Internal	--
Cooling system	Internal	3.5" SAS/SATA hot-swap x 8 (2.5" compatible)
	Front	--
	Rear	1 x 120mm fan, 1200rpm (Compatible with 120mm fan/radiator)
	Side	Dedicated drive bracket 120mm fan x 2, 1200rpm
	Top	--
	Bottom	--
	Internal	--
Expansion slot	7	
Front I/O port	USB 3.0 Type-A x 2 Audio x 1 MIC x 1	
Power supply	Standard PS2(ATX)	
Expansion card	Compatible up to 9.5" (241mm), width restriction - 5.9" (149mm)	
Limitation of CPU cooler	146mm	
Dimension	215.3mm (W) x 426.5mm (H) x 487.5mm (D) , 44.7 Liters 8.48" (W) x 16.79" (H) x 19.19" (D) , 44.7 Liters	

Additional Information

Brand	SilverStone Technology
SKU	CS380B
Weight	35.0000
Color	Black
Chassis Form Factor	MiniITX
Side Panel	Vented
Material	Steel
PSU Wattage	No PSU
Vendor SKU/EAN	844761013875

