

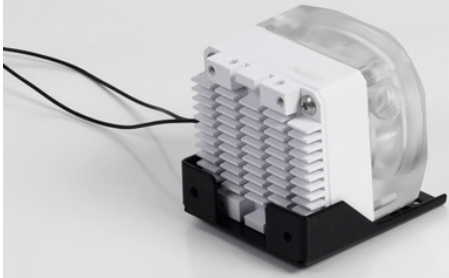
BARROW Barrow DDC bracket

\$4.95

Product Images



BARROW



P/N:TCBJ-DDF

BARROW



P/N:TCBJ-DDF

BARROW



P/N:TCBJ-DDF

BARROW



安装示意图



Short Description

Suitable for 120mm cold row of holes to expand stent TCBJ-G and TCBJ-P, with the expansion through sub-mount, fixed installation to achieve DDC type pumps.

Description

Suitable for 120mm cold row of holes to expand stent TCBJ-G and TCBJ-P, with the expansion through sub-mount, fixed installation to achieve DDC type pumps. The stent fully integrated DDC pumps each class and each installation pitch angle of installation needs, with a plurality of mounting holes, can be achieved with BARROW-based DDC cooling kit DDC pump to achieve 360-degree horizontal and vertical installation 4 angle of 90 degrees to install more installation requires seed position. Universal M4 screw mounting and fixing me with BARROW pump integrated pump cover can achieve total installed pump + tank

Specifications

Material: Steel
Quantity: 1PCS / only
Screw: M4 / 4PCS
Packaging: Box

Additional Information

Brand	Barrow
SKU	TCBJ-DDF
Weight	1.0000
Color	Black
Pump Type	DDC
Material	Steel
Vendor SKU/EAN	6937826603761

