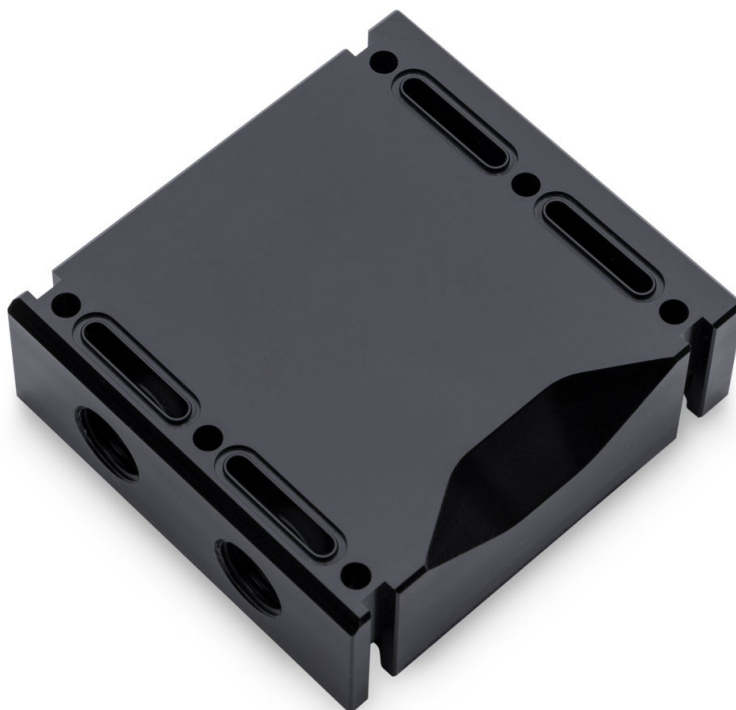




# EK-Scalar Dual 3-slot - Acetal

\$45.99

## Product Images



## Short Description

EK-Scalar Terminal Dual 3-slot is a parallel high-quality interconnection for connecting two (2) same type EK-Vector or EK-FC water blocks in a single, sturdy unit. Connecting multiple graphics has never been this easy

and aesthetically pleasing!

## Description

---

EK-Scalar Terminal Dual 3-slot is a parallel high-quality interconnection for connecting two (2) same type EK-Vector or EK-FC water blocks in a single, sturdy unit. Connecting multiple graphics has never been this easy and aesthetically pleasing!

The Terminal is made of high-quality black POM Acetal. There is no need to purchase additional links since the EK-Scalar terminal is mounted directly to the water block. Serial and parallel water flow is graphically explained in the installation manual.

## Specifications

---

Included:

- 1x EK-Scalar Dual 3-slot - Acetal
- 2x Plug G1/4
- 1x mounting mechanism

For use with motherboards with PCIe x16 slots 60.9 mm (2.4") apart!

PLEASE NOTE:

- The EK-Scalar terminals are only compatible with EK-Vector and EK-FC blocks
- To avoid cracking your EK plexi full cover water block, use only 0.5 - 0.7 Nm of torque force on the terminal screws.
- Do not use excessive force while fastening the terminal to the water block itself!

## Additional Info

	G1/4
--	------

## Additional Information

Brand	EK Waterblocks
SKU	EK-SCALAR-DUAL-3-SLOT-AC
Weight	0.5000
Color	Black
Vga	Universal
Block GPU Type	Nvidia/AMD
Block Accessory Type	SLI Terminal
Material	Acetal
Vendor SKU/EAN	3831109813973

