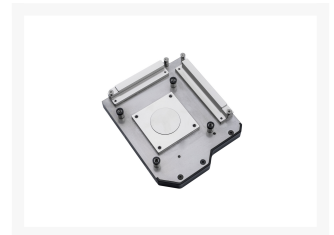


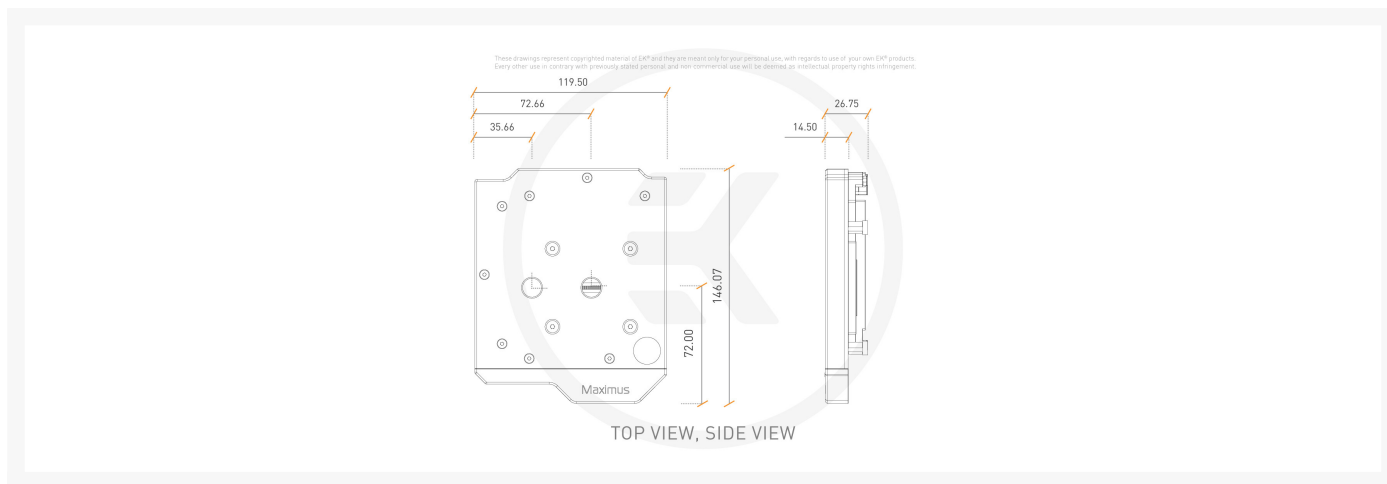


# EK-Momentum ROG Maximus XI Extreme D-RGB - Plexi

\$154.99

## Product Images





## Short Description

EK-Momentum ROG Maximus XI Extreme D-RGB is the new Quantum Line monoblock specifically engineered for ROG Maximus XI Extreme motherboards. Featuring the latest cooling engine with low restriction and high performance.

## Description

EK-Momentum ROG Maximus XI Extreme D-RGB is the new Quantum Line monoblock specifically engineered for ROG Maximus XI Extreme motherboards. Featuring the latest cooling engine with low restriction and high performance.

EK® Momentum series monoblocks utilize the 5th generation of the award-winning EK® CPU water block cooling engine, further tweaked for performance and optimal coolant flow! This water block directly cools Intel® 1151 socket type CPU, as well as the power regulation (MOSFET) module. Liquid flows directly over all critical areas, providing the enthusiasts with a great solution for high and stable overlocks. Like with every EK monoblock, EK- EK-Momentum ROG Maximus XI Extreme D-RGB features high flow design and it can be easily used with the system using a weaker water pump or lower pump speed settings as well. The Momentum monoblock also comes with sophisticated D-RGB (addressable) lighting which connects to a standard 3-pin 5V D-RGB header.

The purest nickel-plated copper available on the market is used for the EK-Momentum cold plate which is precisely machined to a dense micro-fin structure. This Z390 monoblock also comes with a special cold plate which ensures that the monoblock has better mechanical contact with the IHS of 8th and 9th gen Intel 1151 socket based processors, thus enabling better thermal transfer. The nickel plated brass screw-in standoffs are pre-installed and allow for easy installation. Top of the monoblock features a CNC machined glass like Acrylic top piece.

The new cooling engine is characterized by the top-integrated jet nozzle which is combined with a thicker jet plate allowing a more precise bow control. The simplified water block structure offers a more optimized coolant flow and easier maintenance, while the jet plate ensures the best contact surface for the CPU.

Unlike other solution on the market, this is a true one-piece, sturdy and reliable liquid cooling product which

requires only two connector fittings for proper operation. The enclosed thermal pad is used on voltage regulator modules to improve stability, performance and prolongs the lifespan of the motherboard. For the CPU, please use the enclosed (electrically non-conductive) thermal grease EK-TIM Ectotherm.

This product is compatible with ASUS Aura RGB control software. The arrow marking on the 3-pin LED connector is to be aligned with the +5V marking on the RGB header.

## Specifications

---

Technical specifications:

- RGB connector 3-pin 5V digital LED header (Pinout: +5V D G)

Enclosed:

- EK-Momentum ROG Maximus XI Extreme D-RGB Monoblock
- Mounting mechanism
- Thermal grease EK-TIM Ectotherm
- Thermal pads
- Backplate

Made in Slovenia - Europe!

PLEASE NOTE:

- The use of specifically engineered coolants that contain corrosion, scale, and biological inhibitors is mandatory to prevent damage to your nickel plated water block! EK is offering a selection of such products in the [coolants](#) section.
- This product should NOT be installed with any aluminum EK Fluid Gaming parts!
- Fittings are not included! Two fittings are required for proper operation. Due to the immense variety of fittings/barbs available on market and no prescribed standards, we guarantee compatibility only for connectors bought from our website.
- Using delidded CPUs with monoblocks is not recommended as it can lead to poor cooling contact and performance.

## Additional Info

	Nickel Plexi
	Intel

## Additional Information

---

Brand	EK Waterblocks
SKU	EK-MOMENTUM-ROG-MAX-XI-D-RGB-NP
Weight	3.0000
Color	Clear
Block Style	Nickel-Plexi
Vendor SKU/EAN	3831109815731

