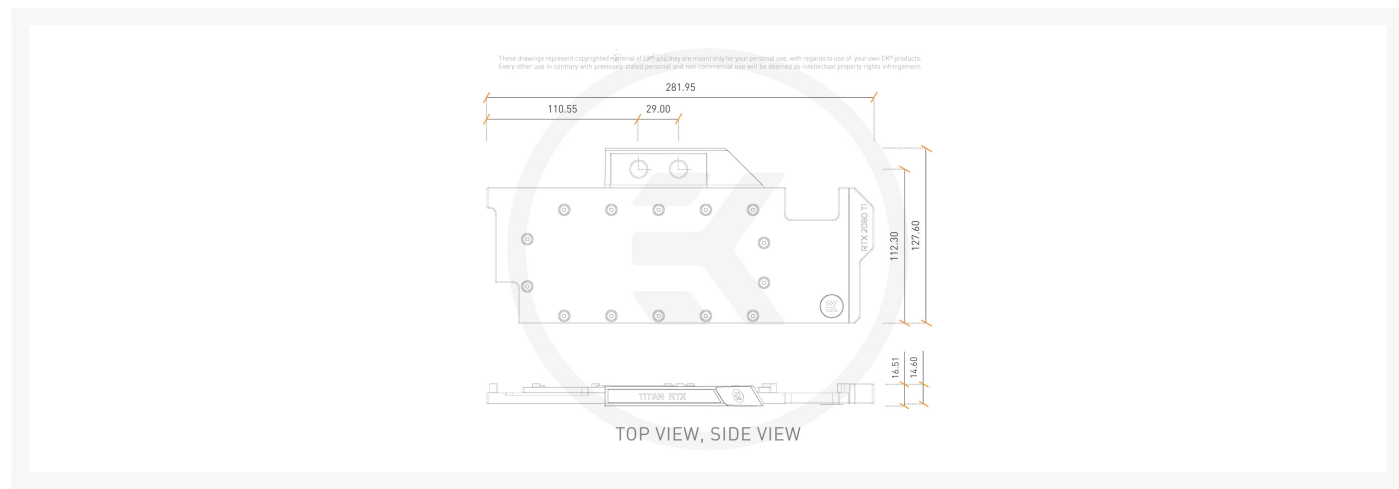
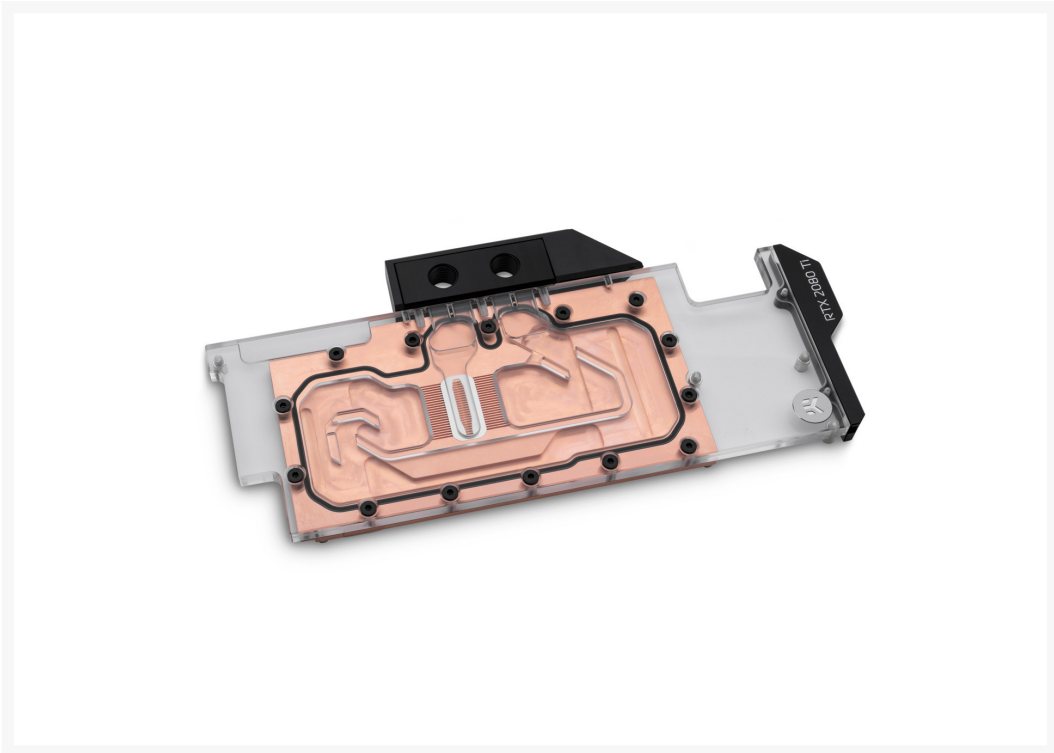




EK-Vector RTX RE Ti - Copper + Plexi

Special Price
\$70.00 was
\$139.99

Product Images



Short Description

The EK-Vector RTX RE Ti high-performance water block is an evolution of the original EK-Vector water block specially designed for multiple reference NVIDIA® GeForce® RTX Turing based graphics cards. The cooling engine is tweaked for even more performance with an optimized flow pattern. It also offers extended compatibility fitting more reference design based graphics cards.

Description

The EK-Vector RTX RE Ti high-performance water block is an evolution of the original EK-Vector water block specially designed for multiple reference NVIDIA® GeForce® RTX Turing based graphics cards. The cooling engine is tweaked for even more performance with an optimized flow pattern. It also offers extended compatibility fitting more reference design based graphics cards.

The water block itself uses the signature EK® single slot slim look, and it covers the entire PCB length. This sophisticated cooling solution will transform your beefy graphics card into a minimalistic, elegant piece of hardware. The block also features a unique aesthetic cover over the block Terminal which is designed to reveal the graphics card model, visible from the side.

This water block is compatible with all reference design GeForce RTX 2080 Ti based graphics cards, but as always, we recommend that you refer to the EK® Cooling Configurator for a precise compatibility match.

The water block directly cools the GPU, VRAM and the VRM (voltage regulation module) as cooling liquid is channeled directly over these critical areas. These newly developed water blocks feature a redesigned cooling engine that has a larger footprint compared to the previous generation of EK® Full Cover water blocks. This results in a larger surface area for heat transfer which increases the thermal performance of these water blocks.

The EK-Vector RTX RE Series water blocks use an Open Split-Flow cooling engine design which proved to be a superior solution for GPU water blocks. It is characterized by low hydraulic flow restriction, which means that it can be used with weaker water pumps, or pumps running on low-speed settings and still achieve top performance. The jet plate and fin structure geometry have been optimized to provide even flow distribution with minimal losses and optimal performances even when used in reversed water flow scenarios.

The base of the block is CNC machined out of electrolytic copper while the top is CNC machined out of glass-like Acrylic material. Sealing is ensured by high-quality EPDM O-Rings. The brass standoffs are already pre-installed and allow for a safe and easy installation procedure.

EK® recommends the purchase of a retention backplate which improves the aesthetics of your graphics cards, but also provides additional passive cooling to the GPU core and circuit board VRM section.

G1/4" threaded fittings can be used on both sides of the terminal and for multiple GPU connectivity, please refer to our offer of EK-Scalar GPU Terminals. The EK-Vector RTX RE GPU water block terminal cover is not compatible with FC Terminal X and FC Terminal (Legacy) multi GPU connectivity bridges.

The NVIDIA® NVLink is compatible with this water block.

Specifications

Enclosed:

- EK-Vector RTX RE series high-performance water block
- Mounting mechanism with screw-in brass standoffs
- Necessary mounting screws, nuts, and washers
- 2x Nickel plated brass plug G1/4"
- 6mm Allen key
- Thermal pads
- Thermal grease EK-TIM Ectotherm (1g)

Made in Slovenia - Europe!

PLEASE NOTE:

- Due to an immense variety of fittings/barbs available on the market and no prescribed standards, we guarantee compatibility only for connectors bought from our website.
- NVIDIA® RTX 2080Ti Founders edition factory backplate is not compatible with this water block!
- Check your toolbox if you are missing this special Hex adapter for some of the screws.
- Fittings are just for showcase and are not included!
- The EK-Vector GPU water block terminal cover is not compatible with FC Terminal X and FC Terminal (Legacy) multi GPU connectivity bridges.
- This product should NOT be installed with any aluminum Fluid Gaming parts!

Additional Info

	Copper Plexi
	G1/4
	Nvidia GeForce

Additional Information

Brand	EK Waterblocks
SKU	EK-VECTOR-RTX-RE-TI-CP-D
Weight	3.0000
Color	Clear
Vga	NVIDIA GeForce RTX 2080/2080 SUPER
Block GPU Type	Nvidia
Block Style	Copper-Plexi
Vendor SKU/EAN	3831109815922
Special Price	\$70.00

