



BARROW Barrow Aurora LRC 2.0 RGB Energy Series CPU Waterblock For Intel 115X - White

\$72.95

Product Images



Short Description

These Barrow CPU waterblocks are made with high strength acrylic that will not crack, is highly transparent and has a longer service life.

Description

These Barrow CPU waterblocks are made with high strength acrylic that will not crack, is highly transparent and has a longer service life.

Features

ORIGINAL IMPORTED ACRYLIC BOARD MATERIAL

Original imported acrylic board material
No discoloration, High strength no cracking
Higher transparency, longer service life

ORIGINAL IMPORTED ACRYLIC MATERIAL DOES NOT CHANGE COLOR, NO CRACK TRA
ORIGINAL IMPORTED ACRYLIC MATERIAL DOES NOT CHANGE COLOR, NO CRACK
ORIGINAL IMPORTED ACRYLIC MATERIAL DOES NOT CHANGE COLOR, NO CRACK TRAN

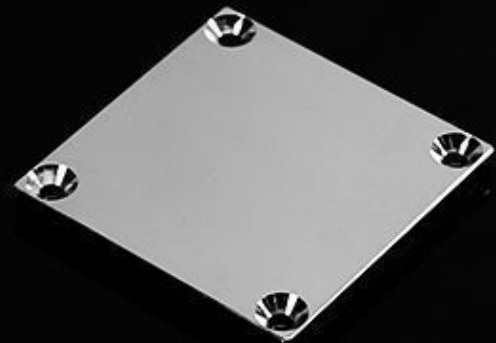


NICKEL PLATED COPPER BACKPLANE

NICKEL PLATED COPPER BACKPLANE

Copper with high thermal conductivity is the main material for backplane.

The thermal conductivity is second only to silver. Mirror polishing nickel plated process can prevent oxidation, extend service life and keep a very well connection with GPU.



L.R.C LED SYSTEM

L.R.C LED SYSTEM

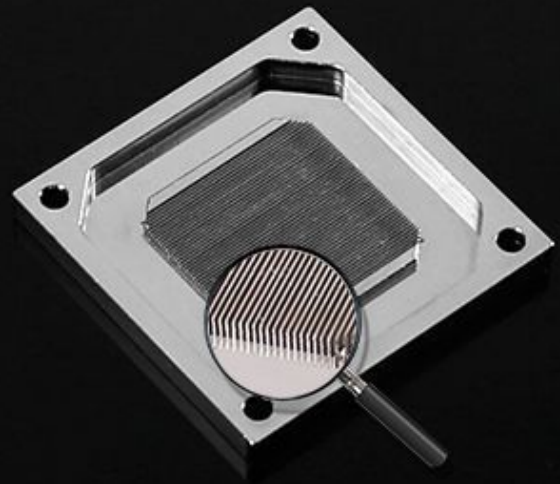
Built in RGB lighting components could achieve various colors changing and make sure that the water block looks more colorful.



WATER CHANNEL

0.4MM MICRO CHANNEL

The 58mm*58mm high purity nickel plated copper back plane provides up to 49 grooves micro water channels and each water channel are grooved in the end. It uses 4+2 asymmetric design (groove width 0.4mm + interval 0.2mm) so that the contact area of the coolant and the backplane is increased meanwhile the heat dissipation performance is enhanced.



Specifications

CPU socket compatibility:

- Intel 115X

Additional Information

Brand	Barrow
SKU	LTYKB-ARK-WH
Weight	2.5000
Color	Clear
CPU Series	Intel 115X/1200
Block CPU Type	Intel
Block Style	Nickel-Plexi
Vendor SKU/EAN	6937826693182

