

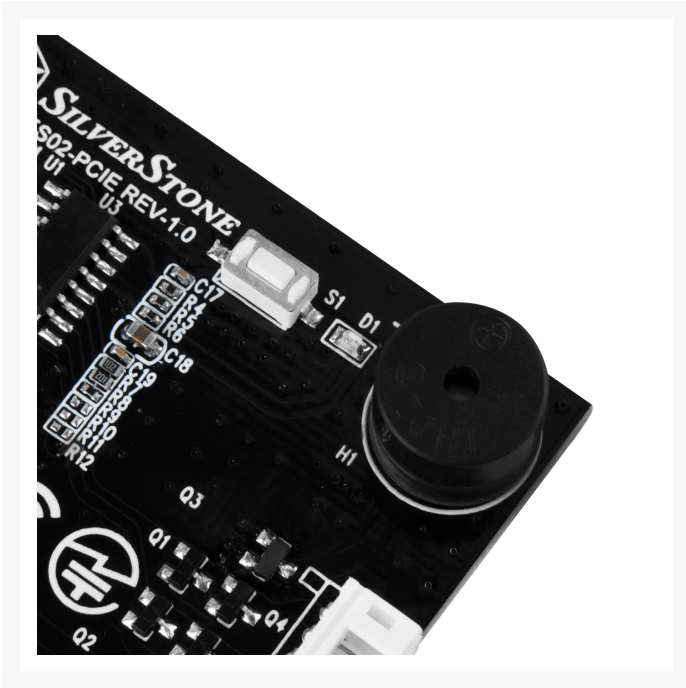


SilverStone Technology 2.4G Wireless Remote Computer Power/Reset Switch Components

\$36.99

Product Images







Short Description

ES02-PCIe is a convenient remote switch kit designed by SilverStone to wirelessly turn on / off and reset a computer. By utilizing existing standard 2.4GHz RF wireless technology, PCI Express x1 slot, and power / reset pin headers on a motherboard, the ES02-PCIe kit is easy to install and use within 20 meters of a connected computer.

Description

ES02-PCIe is a convenient remote switch kit designed by SilverStone to wirelessly turn on / off and reset a computer. By utilizing existing standard 2.4GHz RF wireless technology, PCI Express x1 slot, and power / reset pin headers on a motherboard, the ES02-PCIe kit is easy to install and use within 20 meters of a connected computer. An included Y cable ensures your computer case's own power and reset buttons can be used concurrently with the ES02-PCIe if needed. Users looking for a simpler security solution than software access control will find ES02-PCIe to be a good alternative. Those with computers located in hard to reach area or has special usage scenarios will also find the ES02-PCIe to be very handy.

Features

- Control your computer from anywhere in the room using 2.4GHz RF remote
- 2.4GHz receiver PCIe card included
- Works as far away as twenty meter
- Includes power / reset switch Y cable
- Includes optional low profile expansion slot cover
- Integrated PC speaker on receiver assist in providing auditory feedback while in use

Specifications

Adapter card

Adapter form factor Low profile PCIe x1

Operation frequency 2.4GHz

EIRP 3.76dBm (Measured max.)

Operating range 20 meter (Free space)

Environment Operating temperature: 0°C ~ 40°C (32°F ~ 104°F)
Storage temperature: -40°C ~ 70°C (-40°F ~ 158°F)
Operating humidity: 10% ~ 90% non-condensing
Storage humidity: 5% ~ 90% non-condensing

Net Weight 29.6g

Dimension 120mm (W) x 21mm (H) x 68mm (D)
4.72" (W) x 0.83" (H) x 2.68" (D)

Remote control

Operation frequency	2.4GHz
EIRP	3.76dBm (Measured max)
Operating range	20 meter (Free space)
Battery type	CR2032 (Lithium manganese button battery)
Nominal voltage	DC 3.0V
Battery environment	Operating temperature: -20°C ~ 70°C (-4°F ~ 158°F) Storage temperature: 10°C ~ 40°C (50°F ~ 104°F)

Additional Information

Brand	SilverStone Technology
SKU	SST-ES02-PCIE
Weight	1.0000
Color	Silver
Card Function	Wireless Remote power/reset switch
Card Form Factor	Low profile PCI-E
Vendor SKU/EAN	844761015404

